

CONTENTS

THE ANDROID ADVANTAGE	3
READ ME FIRST	3
UNDERSTAND YOUR PHONE	4
INSERT SIM CARD.....	5
INSERT MEMORY CARD	6
TURNING YOUR PHONE ON/OFF	7
HANDSET KEYS	8
CHARGING THE BATTERY	9
GOOGLE ACCOUNT.....	10
HOME SCREEN	10
APPLICATION LAUNCHER	11
NOTIFICATIONS.....	12
GRAVITY SENSOR	14
PHONE UNLOCKING TECHNIQUES	15
USE GOOGLE SEARCH.....	18
USING THE TOUCH SCREEN	19
TAP AND HOLD	19
DRAG AN ITEM.....	19
SCROLL	20
SWIPE.....	20
USING PINCH TO ZOOM	21
DOUBLE-TAP.....	21
USING THE ON-SCREEN KEYBOARD.....	22
RECENT APPLICATIONS	23
CALLING AND MESSAGING	23
MAKE A CALL.....	23
CONTACTS	24
AIRPLANE MODE	25

SEND MESSAGE.....	25
MULTIMEDIA	26
CAMERA	26
GALLERY	27
MUSIC PLAYER.....	28
FM RADIO	29
VIDEO PLAYER.....	30
SETTINGS, NETWORKS, AND APPLICATIONS.....	31
CONNECT TO THE INTERNET	31
TETHERING & PORTABILITY	32
PAIR WITH BT DEVICES.....	33
CONFIGURING E-MAIL.....	34
GOOGLE MAPS.....	35
PLAY STORE	35
SAFETY PRECAUTIONS	36
TAKING CARE OF YOUR DEVICE.....	38
BATTERY RECOMMENDATIONS	38
RECYCLE YOUR PHONE.....	39
DISCLAIMER.....	39
COPYRIGHT.....	40

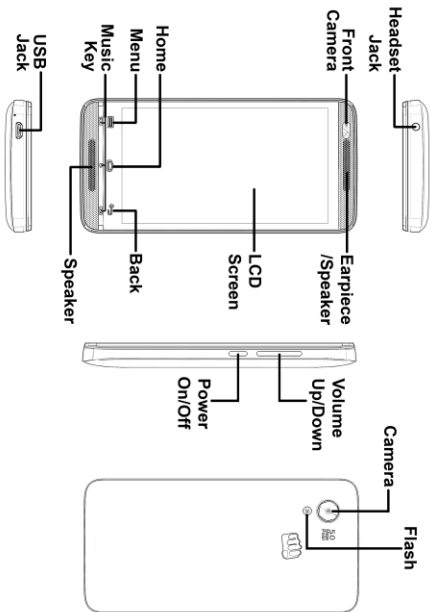
The Android Advantage

Micromax AD4500 comes with KITKAT 4.4.2, which offers a variety of features and can be personalized according to your needs. The OS gives you access to over a million applications available on the Play Store, which you can download and install on your device.

Read Me First

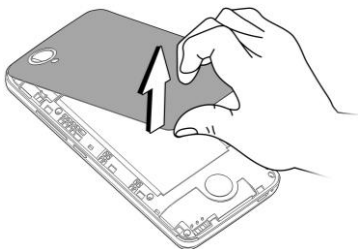
- Please read all safety precautions and this manual carefully before using your device to ensure safe and proper use.
- The descriptions in this manual are based on the default settings of your device.
- Available features and additional services may vary by device, software, or service provider.
- Applications and their functions may vary based on the country, region, software or hardware specifications. Micromax is not liable for performance issues caused by third-party applications.

Understand Your Phone

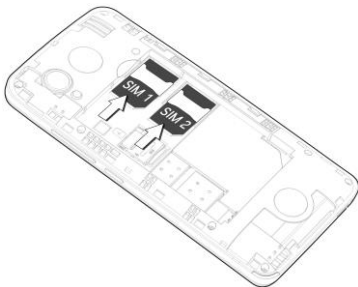


Insert SIM Card

1. Switch off your phone, remove the rear cover and battery as shown:



2. Insert SIM card correctly in the card slot(s), as shown:



3. Place back the battery and rear cover.



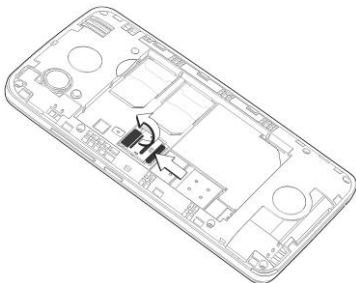
Please keep the SIM Card out of the reach of children.



Be careful when inserting or removing the SIM card, as it is vulnerable to damage due to scratching or bending.

Insert Memory Card

1. Switch off the mobile phone, remove the rear cover and battery.
2. Insert the memory card in the slot as shown:



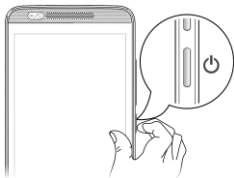
3. Place back the battery and rear cover.



Use only compatible memory cards. Incompatible memory cards may damage the device and corrupt the data stored in the card.

Turning Your Phone On/Off

Press and hold the Power key for a few seconds and select **Power off** to switch on/off the phone.



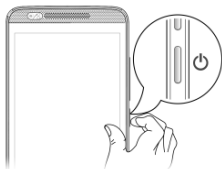


To restart your phone, long press the Power key and select **Reboot**.

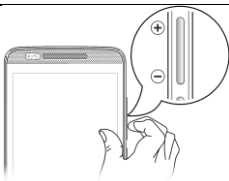
Handset Keys

Keys

Functions



- Long press to switch on or switch off the phone.
- Press once to turn off the screen or to wake up the screen.
- Press for 2 seconds to view quick options to turn off the phone, reboot the device, switch to airplane mode, or adjust the sound profiles.




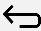
- Adjust the phone volume using from the volume key on the left side of the device.

Keys

Functions

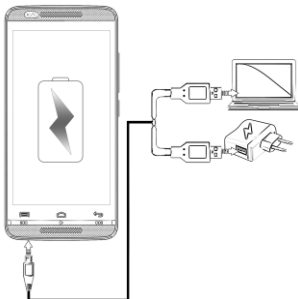


- Opens a menu with items that affect the current screen or application.
- If tapped when on the home screen, opens

	<p>options to personalize the home screen.</p> <ul style="list-style-type: none"> • On long tap, opens the most recently used applications.
	<ul style="list-style-type: none"> • Opens the Home screen. • On long tap, opens Google Now.
	<ul style="list-style-type: none"> • Opens the previous screen you were working on. • If the onscreen keyboard is open, closes the keyboard.

Charging the Battery

Before using the device for the first time, we recommend you to charge the battery for a minimum of 4 hours.



You can charge the device with a travel adapter or connecting the device to a PC via a USB cable.


Google Account

Your Google Account lets you take full advantage of applications and services offered by Google Play Store. Configure your Google account on this handset to get access to your Gmail, Google Play Store, Google Maps, and much more.

Google account setup will be prompted when you turn on your handset for the first time.



Network connection will be required for the Google account setup step to appear.

However, you may configure your Google account at any later stage from  → **Settings** → **Add account** → **Google**. Follow the registration steps to successfully configure your mail account on the device.




If you do not have an existing Google account, you may create one from the account configuring step.



You may add various other accounts, depending on your applications.

Home Screen


You can personalize your home screen with shortcuts, widgets, wallpapers and other items.

- Tap the key  to view quick options, to change wallpaper, add widgets, or open settings section.
- Add extensions to the home screen by placing widgets or application shortcuts on the extended home screen. Swipe

left or right on the home screen to view the next extended home screen.

- There are five launcher icons which for you to open different applications. Except the launcher in the middle, you can re-arrange or replace the other four icons.

Know More About Widgets...

Widgets allow placing application shortcuts on your home screen. You can place analog clock, your recent call logs, and other such sections of your phone on the home page and access them directly! View all available widgets by tapping the  key and then tapping **Widgets**

Application Launcher



Application launcher or Application menu is available in the middle of the bottom pane on the home screen.

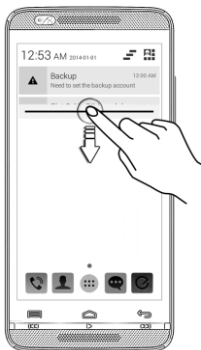
Tap  to view all installed applications. In the application menu, tap and hold any application to take it to the home screen; release the hold to place at any desired location on the

home screen.

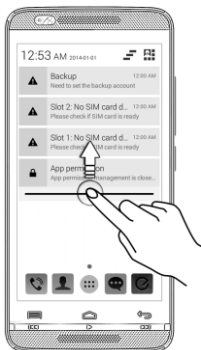
Notifications

Notification icons inform you of new messages and events as and when it appears in the device.

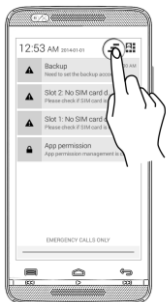
Open Notification Panel



Close Notification Panel

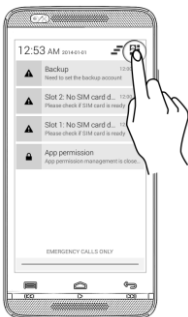


Clear all notifications



When you receive a notification, its icon appears in the status bar, along with a brief summary. You may clear each notification separately by swiping it towards left or right.

Open the Toolkit





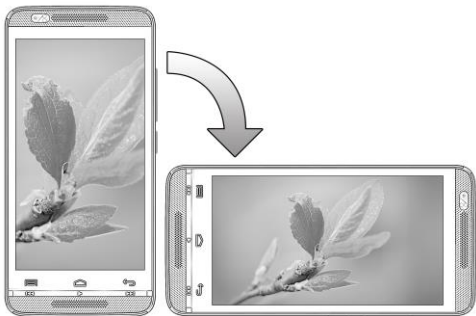


Toolkit gives you quick access to basic phone features such as Airplane Mode, Wi-Fi, Display Brightness, and many more.

Gravity Sensor

Your phone has gravity sensor to detect its orientation and adjust the display (auto-rotate) based on the motion. To enable/disable the auto-rotate feature:

- Open the notification panel, tap , and then select **AUTO ROTATION**.
- You can also enable/disable the auto-rotate feature from  → **Settings** → **Display** → **Auto-rotate screen**.



Phone Unlocking Techniques

You can unlock your phone using a variety of methods like Face Unlock, Voice Unlock, Pattern Unlock, PIN Unlock or Password Unlock.

Slide unlock is the default unlocking method in the phone.

To unlock the screen:

1. Press the power key to wake up the phone.
2. Hold and drag the lock icon towards the unlock icon.

Face Unlock



Look at your phone to unlock!
Allows you to keep your face as
screen unlocking password.

Voice Unlock



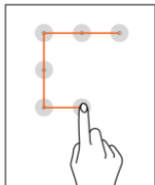
Speak your password to unlock!
You need to speak something for
the phone to recognize your voice
and unlock the screen.

PIN



Enter your PIN to unlock your
phone!
You may set a PIN as your screen
unlocking password.

Pattern



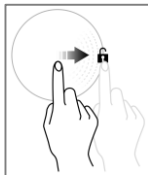
Draw your pattern to unlock!
You can set your own pattern by connecting the dots to prevent your phone from unauthorized access.

Password



Enter your password to unlock!
You may set your desired password as your screen unlocking password.

Slide



Slide unlock!
Just wake up the screen and slide the lock icon towards the unlock icon to unlock your phone.



You may set any desired locking technique from
→ **Settings** → **Security** → **Screen lock**.



You can disable all unlocking methods from your handset by selecting the **None** option.

Use Google Search

You can search for anything in your phone or on the Internet using Google Search by simply typing the search keywords. Google Search also supports voice recognition, allowing you to speak to search, and use voice commands to access various sections in your handset.

Google Search is available on the home screen and also in the application menu.

Using the Touch Screen

Tap and Hold

Tap and hold an item to view the list of actions based on the selected item and condition. You can also move an item from the Apps screen to the home screen using this method.



Drag an Item

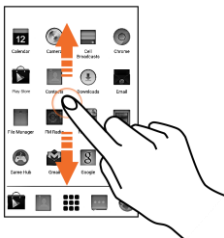


Tap and hold an item and move your finger on the screen until you reach the target position. The item follows your finger.

You can delete items from the home screen by holding the item and dragging it to the **Remove** icon (appears when you tap and hold an item in the Home screen.)

Scroll

Slide your finger on the screen upward or downward (without dragging an item) to scroll.



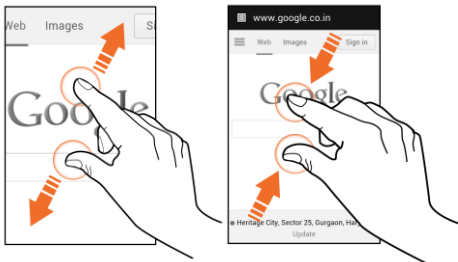
Swipe

Slide your finger in the desired direction. For example, swipe your finger left or right to view your next home screen.



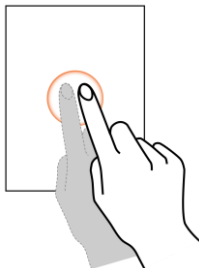
Using Pinch to Zoom

You can open any image or web page and then use your fingers to zoom-in or zoom-out using the pinch gesture.



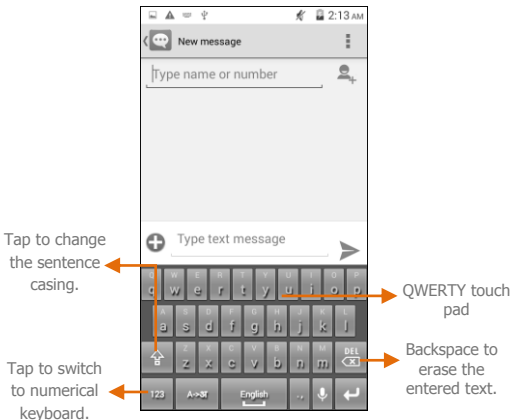
Double-tap

Quickly tap twice on an image, webpage, map, etc. to zoom. For example, double-tap a section of a webpage in the browser to zoom in on that section.



Using the On-screen Keyboard

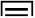
Some applications display the keyboard by default. In others, you will be required to tap a text field, where you want to enter text, to open the keyboard.



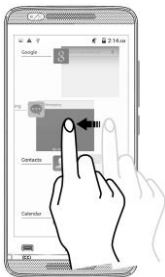
i After typing, tap ↩ key to close the keyboard.

i Tap and hold the text field to open a menu and to cut/copy/paste text.

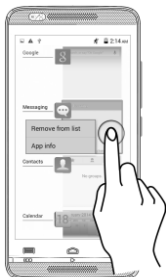
Recent Applications

Tap and hold  key on the home screen to view the list of recent applications. You can easily remove items from the list to free some memory and make your phone work faster.

There are two ways to remove items from the list.




Drag an item towards left or right.



Tap and hold an item and then select **Remove from list.**

Calling and Messaging

Make a Call

Tap  on the menu screen or the home screen. By default, the dialer will display a list of contacts on which calls have been made very often and the contacts which have been marked as

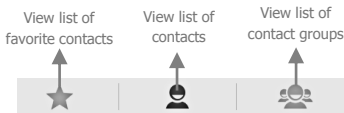
favorites.

You can show the dialer by tapping  or view the call history by tapping .

Contacts

Go to  → 

Store, use, and synchronize contact details in your contact list. You can now create contact groups or mark contacts as favorites in your phonebook. Use tabs or swipe through to view the list of contact groups, contacts, and favorite contacts list.

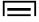


Search for your desired contacts under any of the three tabs by tapping .



Add a new contact in the contacts list by tapping .

You can synchronize your contacts list with any of your accounts configured on this device.

1. Tap the  button from the contacts screen and then tap **Accounts**.
2. Select the account(s) with which contacts list is to be synchronized. You can auto-sync contacts by selecting the

Auto-sync app data option.

Your contacts synchronization will be complete in a few seconds.



For synchronize contacts, you need to have Internet connectivity. If the Sync does not proceed as expected, check whether data connection is set to ON.

Airplane Mode

Some locations may require you to disable all the wireless features of your mobile. The Airplane Mode enables you to disable all incoming and outgoing calls, Wi-Fi, and BT connections.




To activate the airplane mode:

1. Press and hold the Power button and then select **Airplane mode**. Or,



Drag notification panel down, tap , and then select **AIRPLANE MODE**.

Send Message

To send a message:

1. Tap  on the menu screen or home screen and then tap  to compose a message.
2. Tap  icon to view the types of files that can be attached and select the desired type of multimedia file.
3. Tap to select the composition text box and enter your

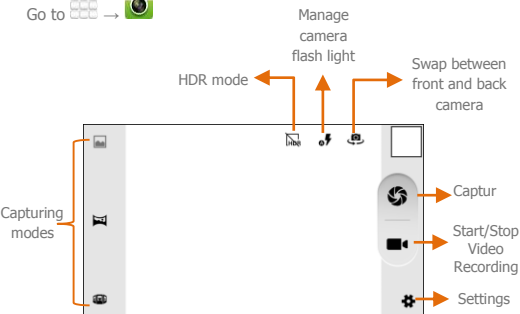
message body in it.

4. Enter the contact name (if it exists) or enter the phone number. You can also tap the  icon to view and select contact(s) from the contact list.
5. Tap  to send the message.

Multimedia

Camera

Go to  → 



You can share/copy/move/delete images and videos from the gallery.

Gallery

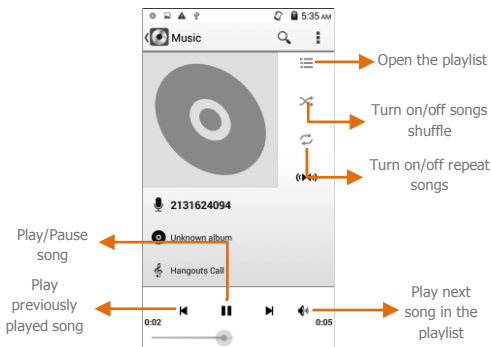
Go to  → 

You can use the Gallery to view pictures, play videos and share files. Tap an album to open and view its contents.



Music Player

Go to  → 



Press the phone's volume up/down key on the left side of the mobile phone to adjust the volume.



You can use a micro SD card to enhance the storage capacity for your multimedia files such as music, photos, emails, and so on.

FM Radio

Go to  → 

You can listen to your favorite FM channels using the inbuilt FM receiver of your phone. Before starting the FM, you need to plug-in the headset as it works as antenna for the FM radio. Use the intuitive buttons and icons on the phone in the radio interface to enjoy the features of your inbuilt FM radio.



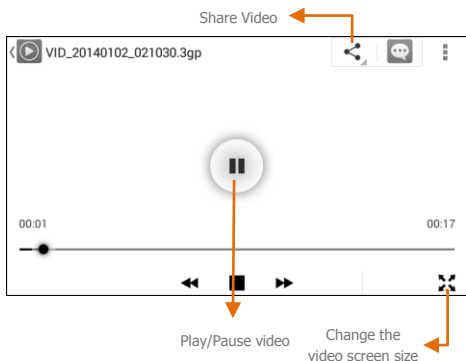
Press the phone's volume up/down key on the left side of the mobile phone to adjust the volume.

Video Player

Go to  → 

Share via
MMS


Stop, Loop
or Trim
the video



Settings, Networks, and Applications

Your phone can connect to various networks and devices, including Internet, Wi-Fi, GPRS, Bluetooth, devices, such as headsets. You can also transfer files to/from your PC through the data cable.


Connect to the Internet

Go to  → **Settings** → **Dual SIM Setting** → **Data connection** and select the SIM on which data connection is to

be enabled.

You may also need to configure the access point name for the data connection to work.

To configure the access point name:

Go to  → **Settings** → **More** → **Mobile networks** → **Access Point Names** and select the SIM for which access point name is to be configured. Select the access point name from the list.



By default, the access point name gets configured once you insert the SIM, Or, your network provider sends the access point name settings via SMS. You may need to install these settings. If the access point names are not listed by default, please contact your network provider for the same.

Tethering & Portability

You can use your AD4500 as a modem and connect your PC or laptop to the Internet, when required. Start using your SIM data pack on your PC or Laptop now!

Go to  → **Settings** → **More** → **Tethering & portable hotspot**.

USB Tethering

1. Connect your phone with your PC/Laptop via USB cable.
2. Select the **USB tethering** option.
3. Select your phone network as the network connection in

your PC/laptop and get access to the Internet.

BT Tethering

1. Pair your phone with the BT enabled PC/laptop via BT pairing option.
2. Select the **BT tethering** option in your phone.
3. On the paired PC/laptop, select the BT device (your phone) and choose to connect to the internet.

Wi-Fi Hotspot

1. Turn on the **Wi-Fi hotspot** option in your phone.
2. On the other Wi-Fi enabled PC/laptop/handset, choose your phone as a Wi-Fi network to connect with it.
3. View and configure Wi-Fi hotspot settings by tapping the **Wi-Fi hotspot** option.



Your mobile operator will charge you based on your GPRS data usage.

Pair With BT Devices

Go to  → **Settings** → **BT**.

1. If BT is off, turn it on and then tap **BT**. Your phone scans and displays the BT devices in range.
2. Tap the ID of the other device in the list to pair with it.
3. You will be prompted to confirm passkey on both devices.
4. Tap **Pair** to confirm the passkey and pair the devices. On successful pairing, your phone connects to the device.



If the device you want to pair with is not in the list, make it discoverable and then search. If your phone stops scanning before you make the other device discoverable, tap **SEARCH FOR DEVICES**.




Tap **Micromax AD4500** at the top of the scanned device list to make your AD4500 visible on other devices.

Configuring E-Mail

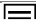
You can check and reply to your e-mails from your AD4500 from anywhere and anytime. Apart from the Gmail account, you can configure other accounts too on this device.

To set up an email account:

1. Go to  → **Settings** → **Add account**. Select the type of account you want to create
2. Type the email address and password in the respective fields and tap **Next**.
3. Set account settings, as required and tap **Next**.
4. Provide your account name and your name and then tap **Next** to successfully finish account configuration.

The server will check for online settings automatically and your account will be set up. If not, please check your Internet settings before proceeding.



Tap the  button of the phone and then tap **Refresh** to refresh your emails manually.

Google Maps

Google Maps is a web-based service offered by Google Inc. which offers you access to various map-based services. You can view various streets, landmarks and can even plan your routes with the help of Google Maps. It comes with a navigation system (GPS required) which gives step-by-step route guidance while driving or walking. You can even download maps for offline usage. This serves as a useful application for your day-to-day usage.

Settings required for Google Maps access include:

Enable location access from  → **Settings** → **Location**.

Go to  →  to start using Google Maps.



Internet connection is required for using Google Maps. When you use the map, you use your Internet connection to transfer data to and from your phone.



Google Maps application may not be available in every street, country or region.





Micromax does not guarantee the accuracy of any directional services.

Play Store

Your Android phone lets you access unlimited entertainment sources. You can download applications, games, movies, and books from the ever increasing Play Store. New items get added almost daily to the store to give users a never ending fun experience.

To view and manage the list of all inbuilt, downloaded, and

running applications, go to  → **Settings** → **Apps**.

To download applications, games, movies, and books from the Play Store, go to  →  to access the Google Play Store. View the details and download items, as desired.



Not all items are free of cost in the Play Store.



You need to enable internet connection and configure Google account on your device to get access to the Play Store.

Safety Precautions



Switch off your device in any area with potential explosive atmosphere. Sparks arising out of radio frequency may cause fire or explosion. Therefore switch off your device at refueling stations, fuel depots, chemical plants or places where blasting operation is in progress. Remember to comply with legal requirements and local restrictions when using the phone.



Your Phone's radio waves may interfere with inadequately shielded medical devices. Consult a physician or manufacturer of the medical device to know whether they are adequately shielded from external Radio Frequency.

Switch off your device when regulations require you to do so.



Always keep the phone and accessories out of reach of small children. Small parts such as the SIM card or micro SD card can be dismantled and swallowed by small children.



Do not place the phone near electromagnetic data carriers such as credit/Debit cards. Information stored on them could be lost.



Permanent damage to hearing may occur if you use earphones at high volume for prolonged periods. Set your volume to a safe level. If you experience discomfort in your ears, reduce the volume or discontinue the use of your earphones.



Manufacturers of medical devices recommend a minimum distance of 15.3 cm (6 inches) between a wireless device and an implanted medical device such as pacemaker or cardioverter defibrillator to avoid issues arising out of radio frequency interference.



The mains voltage (V) specified on the power supply unit must not be exceeded to prevent damage to the charging device. The power supply must be plugged into an easily accessible AC power socket when charging the battery.



You may only open the phone to replace the battery (if not inbuilt), SIM card and micro SD card. You must not disassemble the battery under any circumstances. All other changes to this device are strictly prohibited and will invalidate the warranty.



The phone may cause interference in the vicinity of TV sets, radios and PCs.



The battery may cause damage, injury or burns if a conductive material closes the circuit of the terminals. Exercise care in handling any charged battery, particularly when placing it inside your pocket, purse or other container with metal objects. Do not dispose of batteries in fire as they may explode.



Do not use the phone while driving. When you have to use the phone, please use the earpiece. Please put the phone safely in the phone stand. Do not put it onto any passenger seat or any place from which it may fall down during collision or emergency braking.



Flight is influenced by interference caused by the phone. It is not advised to switch on a phone during flight.



Please repair the device at Micromax authorized service center only. Repairing the device by yourself invalidates the warranty rules.

Taking Care of your device

Your device is a product of superior design and craftsmanship and should be handled with care. The following suggestions will help you protect your phone.

- Keep the device dry. Precipitation, humidity, and all types of liquids or moisture can rust the electronic circuits. If your device gets wet, remove the battery, wipe it with a dry cloth and take it to an authorized service center.
- Do not store the device in high or cold temperature. Extreme temperatures can shorten the life of electronic devices and damage batteries.
- Do not use or store the device in dusty, dirty areas. Its moving parts and electronic components can get damaged.
- Do not attempt to open the device other than as instructed in this guide.
- Do not drop, knock, or shake the device. Rough handling can break internal circuit boards and fine mechanics.
- Do not use harsh chemicals, cleaning solvents, or strong detergents to clean the device. Only use a soft, clean, dry cloth to clean the surface of the device.
- Do not store your device near magnetic fields or allow your device to come in contact with magnetic fields for extended period of time.

Battery Recommendations

- Please put the battery in a cool and well-ventilated place out of direct sunlight. We recommend you to charge the battery at room temperature range.

- Batteries have life cycles. After a full charge, if the power reserve of the battery tend to deplete inordinately faster than usual, the battery life is at an end. Replace the battery with a new battery of the same make and specification.
- Do not discard the battery with household trash. Please dispose of used battery according to your local environmental laws and guidelines.

Recycle your Phone



The WEEE logo (shown at the left) appears on the product (battery, handset, and charger) to indicate that this product must not be disposed off or dumped with your other household wastes. You are liable to dispose of all your electronic or electrical waste equipment by relocating over to the specified collection point for recycling of such hazardous waste.

Collection and proper recovery of your electronic waste equipment at the time of disposal will allow us to help preserve the environment. Recycling of the electronic waste equipment will ensure safety of human health and environment. For more information on best practices for disposal of electronic and electrical waste, please visit to our web site:

www.micromaxinfo.com/weee.php.

Note: Micromax will not bear any responsibility for any incompliance with the above mentioned guidelines or improper usage of the mobile phone.

Disclaimer

- The colors, specifications, functions and graphics shown/mentioned in the user manual may differ from the actual product. In such a case, the latter shall govern. Images shown are for representation purpose only. Specifications are subject to change without prior notice. Micromax keeps the right to modify the content in this user guide without prior notice.

- Upon first use of your device, your device will send information related to your mobile, IMEI numbers, location details and other software details through SMS* automatically. This information may be used as further specified in Micromax privacy policy**.
- Talk and standby times are affected by network preferences, type of SIM cards, connected accessories and individual usage patterns. Services and some features may be dependent on the network, service/content providers, SIM cards, compatibility of the devices used and the content formats supported.
- Other product logos and company names mentioned herein may be trademarks or trade names of their respective owners.

*Operator tariff shall be applicable for SMS.

**Micromax privacy policy is available at www.micromaxinfo.com.

Copyright

All rights reserved. Reproduction, transfer, distribution or storage of part or all of the contents in this document in any form without the prior written permission of Micromax is strictly prohibited.