

lenovo

Lenovo A369i

Quick Start Guide v1.0



For Android 4.2 Software.
Read this guide carefully before using your phone.

Learn more

For more information about Lenovo Mobile Phone functions, Regulatory Notices and other useful manuals, go to <http://support.lenovo.com/>.

Getting support

For support on network service and billing, please contact your wireless network operator. For instructions on how to use your device, go to <http://support.lenovo.com/>.

Legal notices

Lenovo and the Lenovo logo are trademarks of Lenovo in the United States, other countries, or both.

Other company, product, or service names may be trademarks or service marks of others.

First Edition (October 2013)

© Copyright Lenovo 2013.

LIMITED AND RESTRICTED RIGHTS NOTICE: If data or software is delivered pursuant a General Services Administration "GSA" contract, use, reproduction, or disclosure is subject to restrictions set forth in Contract No. GS-35F-05925.

Reduce | Reuse | Recycle



70110624

Printed in China

Technical specifications



Model and system

Model: Lenovo A369i

System: Android 4.2



Size and weight

Height: 124.00 mm

Width: 63.98 mm

Depth: 11.70 mm

Weight: 120.78 g



CPU and capacity

CPU: MT6572W Lite Dual-core 1.3 GHz

Capacity: 4 GB



Camera

Type: CMOS

Pixels: 2 MP



Power and battery

Battery: 1500 mAh (Built-in rechargeable lithium-ion battery)



Display

Size: 4.0 inches (diagonal)

Screen: Multi-touch display

Resolution: 800 × 480

LCD type: TFT



Wireless communication

②Bluetooth 3.0

WLAN

WCDMA, GSM, EDGE



① Based on actual measurements.

② You must be within about 10 m (30 ft) of a Bluetooth device for it to be connected to your phone.

First glance



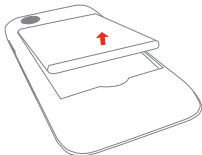
- | | | |
|---------------|-----------------|-------------|
| 1 Receiver | 2 On/Off button | 3 Volume up |
| 4 Volume down | 5 Microphone | 6 Camera |
| 7 Micro USB | 8 Earphone jack | 9 Speaker |

Installing the SIM card

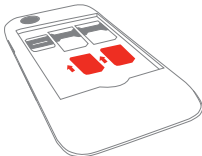
You need to insert the SIM card provided by your carrier to use cellular services. Install the SIM card as shown.



Step 1. Remove the back cover.



Step 2. Lift up the battery from the small opening on the battery compartment.

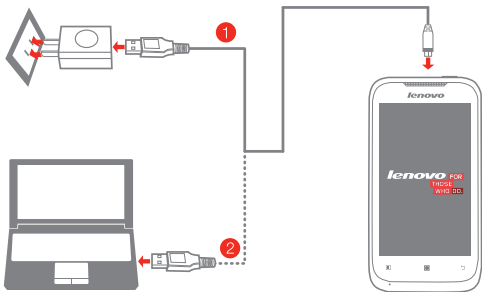


Step 3. Insert your SIM cards into the slots with their metal contacts facing down.

 **DO NOT** insert or remove the SIM cards while your phone is turned on. Doing so can permanently damage your SIM cards or phone.

Charging and turning on/off your phone


Charge the battery as shown.



Method 1. Connect your phone to a power outlet using the included cable and USB power adapter. or

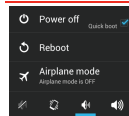
Method 2. Charge the battery using a computer.

 Low battery

 Fully charged

 Charging

Turn on/off



Turn on: Press and hold the On/Off button until the Lenovo logo is displayed.

Turn off, restart and switch mode: Press and hold the On/Off button for a few seconds, then tap **Power off**, **Reboot** or other mode.

 For more information about battery safety, see the [Important Product Information Guide](#).