

CTRL V1

User Manual



1. For your safety	Error! Bookmark not defined.
2. Learn about the phone	4
3. Before using.....	5
4. Getting started.....	8
5. Communication.....	11
6. Multimedia.....	12
7. Connecting to networks and devices	13
8. Health and safety	15

1. For your safety

Read these simple guidelines. Not following them may be dangerous or illegal.



SWITCH OFF IN HOSPITALS

Follow any restrictions. Switch the device off near medical equipment. Do not use the device where blasting is in progress.

Please keep this cell phone away from children, as they could mistake it for a toy, and hurt themselves with it.

Don't try to modify the phone except by the professional.

Warning!

Only use the authorized spare parts, otherwise it may damage the phone and the warranty will **be void**. And it may be dangerous.



SWITCH OFF WHEN REFUELING

Don't use the phone at a refueling point. Don't use near fuel or chemicals.



SIM CARD AND T-FLASH CARD ARE PORTABLE

Keep your phone, phone parts and accessories out of children's reach

Notice: The T-Flash Card can be used as a Memory Disk, the USB cable is necessary.



BATTERY

Please do not destroy or damage the battery, it can be dangerous and cause fire.

Please do not throw battery in fire **to avoid danger**

When battery cannot be used, **pls dispose in an environmental safe method**

Do not try to dismantle the battery.

If the battery or the charger is broken or old, please stop using them. **and replace with certified genuine battery**



USE QUALITY EQUIPMENT

Use our authorized equipment **to avoid danger**



ROAD SAFETY COMES FIRST

Give full attention while driving, pull off the road or park before using your phone. **pls follow traffic rules of local city/town**



INTERFERENCE

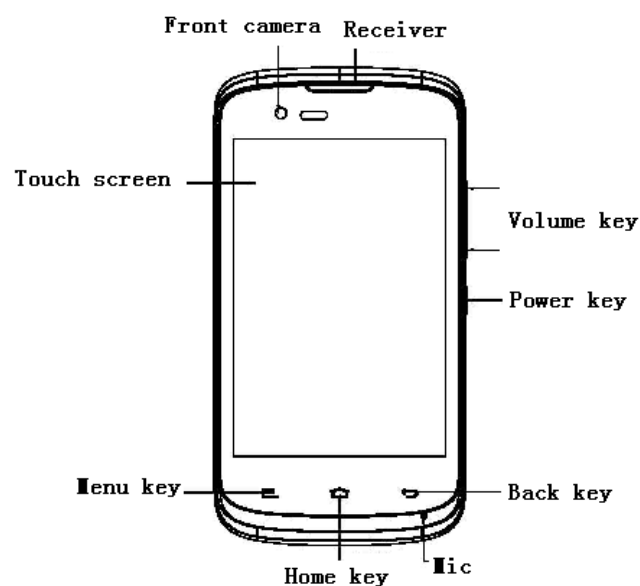
All wireless devices may be susceptible to cause interference, which could affect performance.

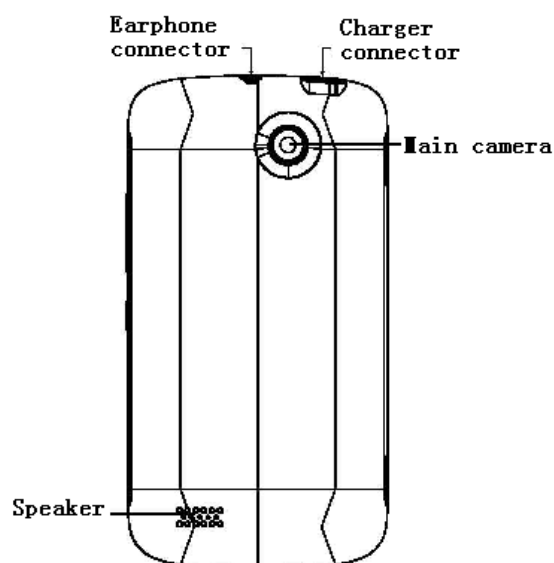


SWITCH OFF IN AIRCRAFT

Wireless devices can cause interference in aircraft. It's not only dangerous but also illegal to use mobile phone in an aircraft.

2. Learn about the phone





Button	Press	Press & hold
Power key (Right side)	Turns on/off the screen.	Opens a menu with options for airplane mode, powering off the phone and so on.
Volume Up/Down (Right side)	When a call is in progress, Increases or decrease the call volume, When the phone is ringing, silences the ringer. On the Home screen when no calls in progress, Increase or decreases the ringtone volume, or sets the phone to be silent instead of ringing. In other applications, controls the volume of music, spoken directions, and other audio.	Quickly increasing the ringtone volume to maximum or minimum.

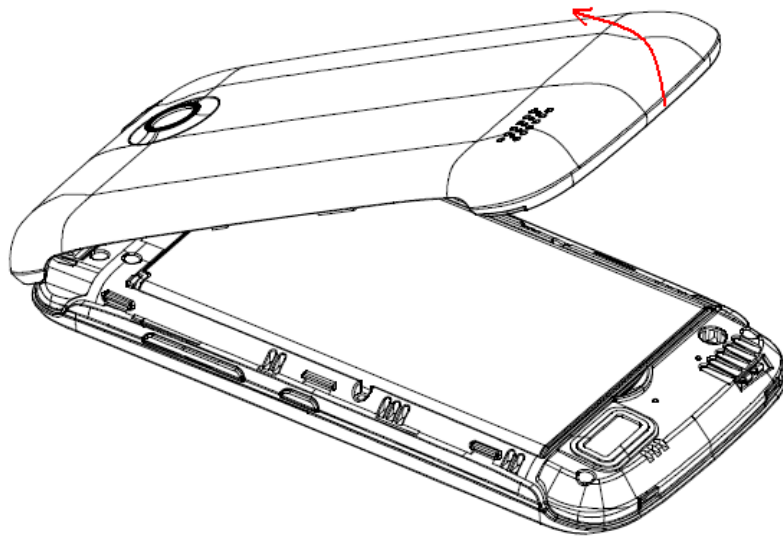
3. Before using

Insert SIM card

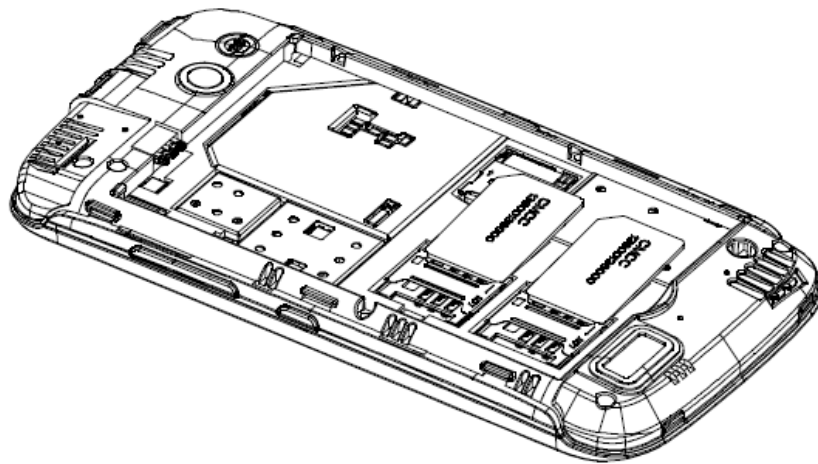
The CTRL V1 is a Dual SIM mobile phone allowing you to use the facility of two networks.

To insert SIM card(s):

1. Switch off the mobile phone and remove the rear cover and battery.



2. Insert the SIM card correctly in the card slot(s)(See figure below).



3. Finally insert the battery and replace the rear cover of the mobile phone.

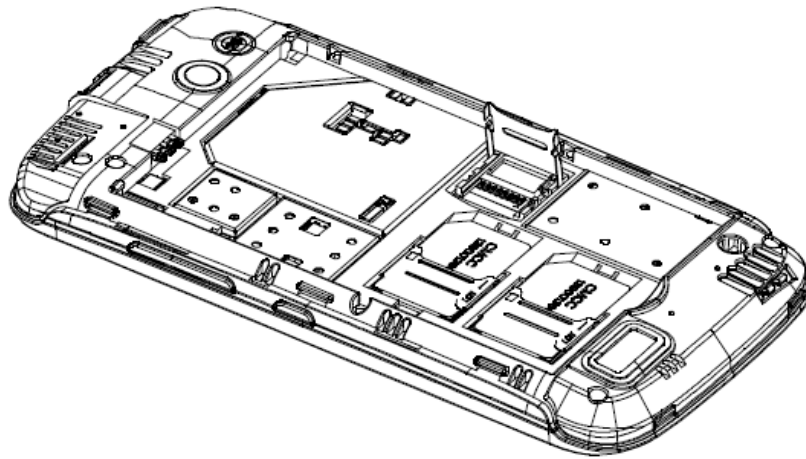
Note: The SIM card is a small object; please keep the card out of the reach of children to avoid swallowing the card by accident. Do not touch the metal surface of the SIM card and keep it away from electromagnetism to avoid loss and damage of the data. You will not be able to connect to the network if the SIM card is damaged.

Insert Memory card

Use only compatible memory cards approved by Our company for use with this device. Incompatible memory cards may damage the card or the device and corrupt the data stored in the card.

To insert the memory card:

1. Power off the mobile phone, then remove the rear cover and battery.
2. Insert the memory card into the slot at the bottom.



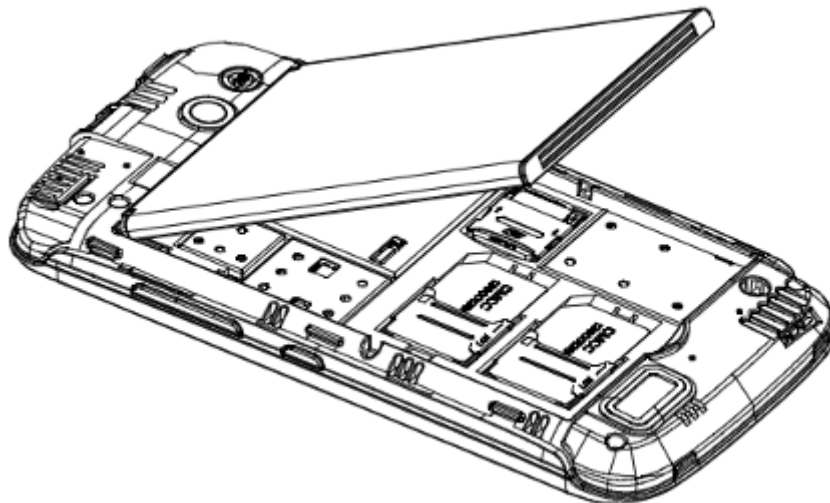
3. Finally insert the battery and the rear cover of the mobile phone.

Remove/Insert Battery

You may need to remove the battery to insert SIM cards, Memory card or for replacing the battery.

To insert the battery:

1. Invert the back of the mobile phone upward and then take off the rear cover.
2. Insert the battery as shown in the following figure.



3. Finally place back the rear cover of the mobile phone.

Note: Please use the original-packing battery and accessories.

Charger

1. Connect the charger to the charger jack on the phone.
2. Next connect the charger to a power socket, the charging starts, with the charging icon in an animated state.
3. When the charging icon becomes static, it indicates that the battery is full.

4. Disconnect the charger from the power socket and the phone.

Note: Slight heating during charging is normal. It indicates that the battery is full, when the charging icon becomes static.

4. Getting started

4.1 Turn on/off your phone

- Turn on the phone

Long press the **power key** to start up the cell phone. If you have started up the SIM card 1/2 lock, you have to enter SIM card 1/2 PIN.

- Turn off the phone

Long press the power key, a context menu will prompt, touch “Power off” to switch off the cell phone.

- To wake up the phone

If you don't use the phone for a while, the Home screen or other screen you are viewing is replaced with the lock screen and then the screen darkens, to conserve the battery.

1. Press the Power button.
2. Drag the lock icon rightward. The last screen you were working on opens.



4.2 Getting to know the Home screen

The Home screen is your starting point to access all the features on your phone. It displays application icons, widgets, shortcuts, and other features. You can customize the Home screen with different wallpaper and display the items you want.



At the top of the screen, the Status bar displays the time, information about the status of your phone, and icons for notifications that you've received.

Touch the Launcher icon at the bottom of the screen to view all installed applications.

4.3 Using the touch screen

The main way to control Android features is by using your finger to touch icons, buttons, menu items, the onscreen keyboard, and other items on the touch screen.

Touch: To act on items on the screen, such as application and settings icons, to type letters and symbols using the onscreen keyboard, or to press onscreen buttons, you simply touch them with your finger.

Touch & hold: Touch & hold an item on the screen by touching it and not lifting your finger until an action occurs. For example, to open a menu for customizing the Home screen, you touch an empty area on the Home screen until the menu opens.

Drag: Touch & hold an item for a moment and then, without lifting your finger, move your finger on the screen until you reach the target position. You drag items on the Home screen to reposition them and you drag to open the Notification panel.

Swipe or slide: To swipe or slide, you quickly move your finger across the surface of the screen, without pausing when you first touch (so you don't drag an item instead). For example, you slide the screen up or down to scroll a list, and in some Calendar views you swipe quickly across the screen to change the range of time visible.

Double-tap: Tap quickly twice on a webpage, map, or other screen to zoom. For example, you can double-tap a section of a webpage in Browser to zoom that section to fit the width of the screen. You can also double-tap to control the Camera zoom, In Maps, and in other applications, Double-tapping after pinching to zoom in some applications, such as browser, reflows a column of text to fit the width of the screen.

Pinch: In some applications (Such as Maps, Browser, and Gallery) you can zoom in and out by placing two fingers on the screen at once and pinching them together (to zoom out)

or spreading them apart (to zoom in).

Rotate the screen: On most screens, the orientation of the screen rotates with the phone as you turn it from upright to its side and back again. You can turn this feature on and off.

4.4 Customizing the Home screen

To add items to the Home screen

Enter the main menu , Touch & hold the icon of an application , then the application will be added to the Home screen.

To move an item on the Home screen

1. Touch & hold the item you want to move, until it vibrates. Don't lift your finger.
2. Drag the item to a new location on the screen. Pause at the edge of the screen to drag the item onto another screen pane.
3. When the item is where you want it, lift your finger.

To remove an item from the Home screen

1. Touch & hold the item you want to remove, until it vibrates. Don't lift your finger. The top of the screen will appear "Delete".
2. Drag the item to the "Delete" icon.
3. When the icon turns red, lift your finger.

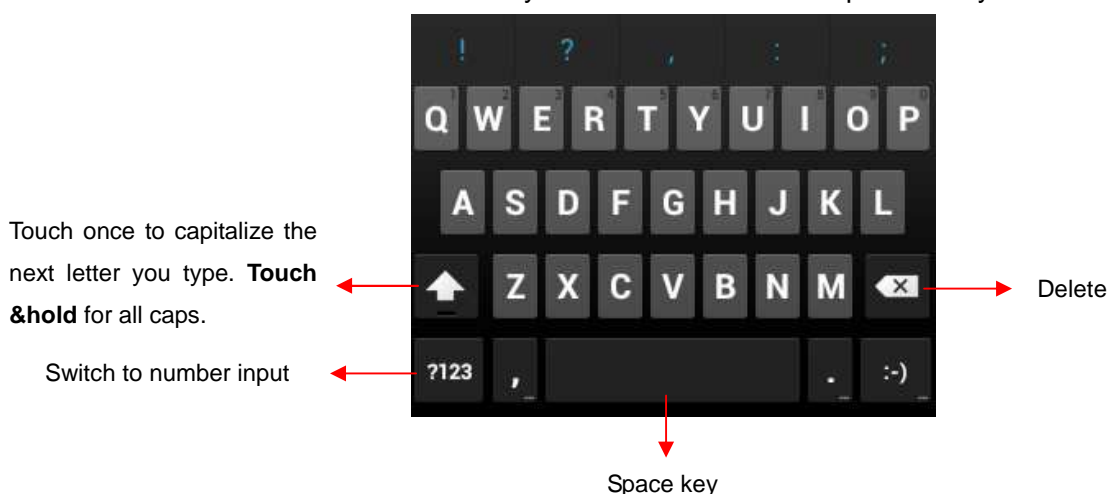
4.5 Connect to network

When you assemble your phone with a SIM card from your wireless service provider, your phone is configured to use your provider's mobile networks for voice calls and for transmitting data.


- **Settings--> SIM management;** the name of the wireless service provider you're currently registered with is selected in the list.
- Click the name of the network provider, you can rename it or set the color for it.
- You can set default SIM for voice call and messaging;

4.6. Input text

You can touch a text field where you want to enter text to open the keyboard.



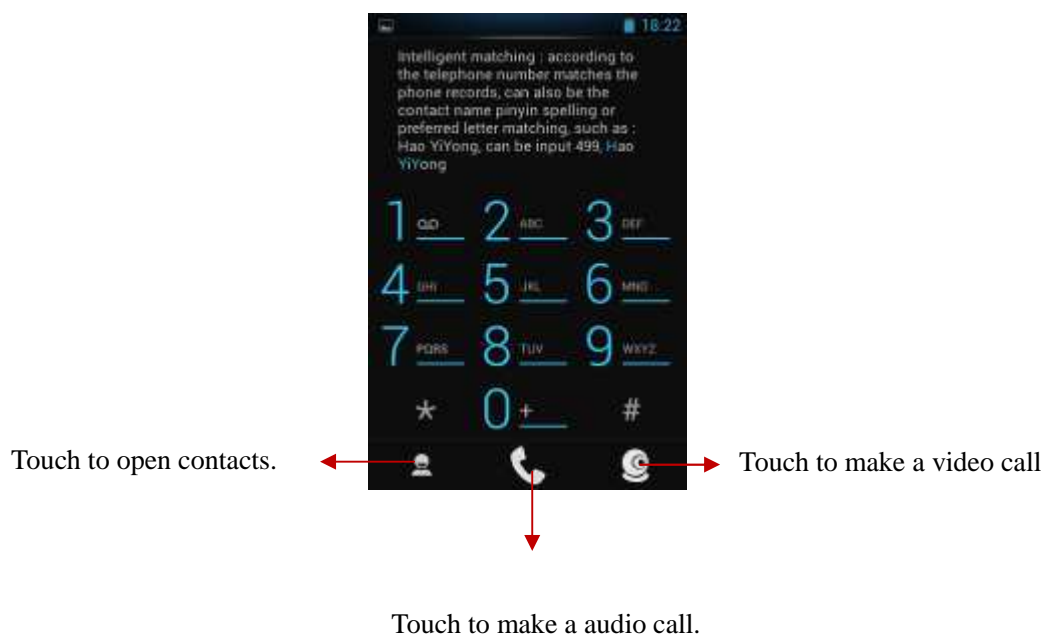
To enter text

- Touch a text field, the onscreen keyboard opens.
- Touch the keys on the keyboard to type; the characters you've entered appear in a strip above the keyboard. With suggestions for the word you are typing to the right. Press the left or right arrows in the strip to view more suggestions.
- Press space or a punctuation mark to enter the highlighted suggested word. If you touch the space key, the suggestion strip offers a series of punctuation marks you can touch, to replace the space with, or touch another suggested word to enter it.
- Use the Delete key  to erase characters to the left of the cursor.
- When you're finished typing, Press Back to close the keyboard.

5. Communication

5.1 Make a call

- * Touch the phone icon on the Home screen or if you're already working with Contacts or the Call log, touch the **Phone** tab.
- * Enter the phone number you want to dial;
- * Touch the phone icon to dial the number that you entered. You can select voice call.



5.2 Messaging

You can use this phone to exchange text messages and multimedia messages with your friends on their mobile phones. The messages come to and from the same contact or phone number will into a single conversation, so you can see your entire message history with a person conveniently.

6. Multimedia

6.1 Camera

Camera is a combination camera and camcorder that you use to shoot and share pictures and videos.

Note: Pictures and videos are stored on the phone's SD card, so you must install one to use camera.

6.1.1 Take a picture



- Adjust your exposure, flash, and other settings if you wish. Or leave them on automatic.
- Frame your subject on screen.
- Touch the Shutter icon on screen.

6.1.2 To shoot a video

- If necessary, drag the control to the video position
- Adjust the quality and other settings if you wish. Or leave them on automatic.
- Point the lens to frame the scene where you want to start.
- Touch the Start Video icon. Camera starts shooting the video.
- Touch Stop video icon to stop shooting. An image from your most recent video is displayed as a thumbnail at the bottom left.

6.2 View albums

Touch the Gallery icon in the Launcher to view albums of your pictures and videos. Gallery

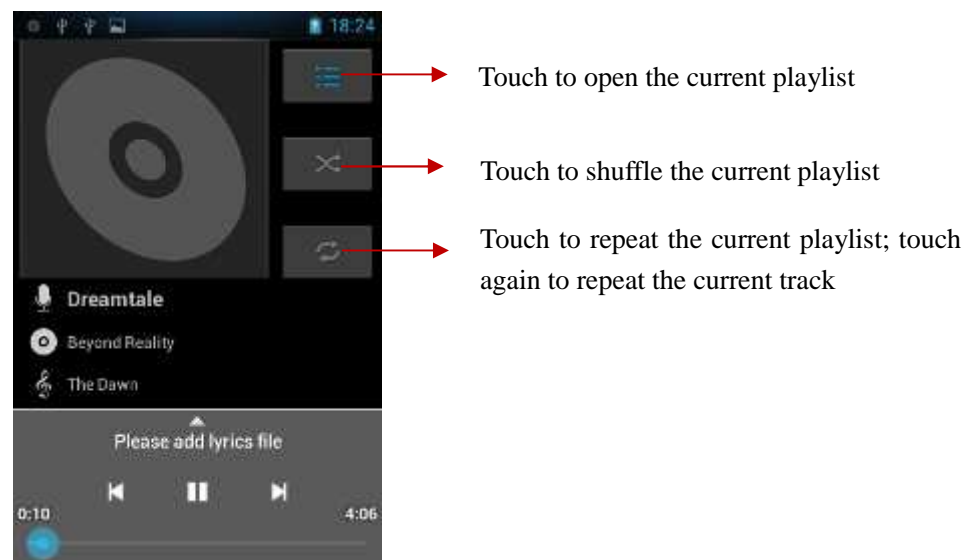
presents the pictures and videos on your SD card, including those you've taken with Camera and those you downloaded from the web or other locations.

You can do the following operations:

- To share pictures: you can share your pictures through MMS, Bluetooth, and so on.
- To delete pictures: You can delete the pictures you are viewing.
- To get details about the picture: You can view more details about the picture.

6.3 Music

You use Music to organize and listen to music and other audio files that you transfer to your SD card from your computer.



7. Connecting to networks and devices

Your phone can connect to a variety of networks and devices, including mobile networks for voice and data transmission, Wi-Fi data networks, and Bluetooth devices, such as headsets. You can also connect your phone to a computer, to transfer files from your phone's SD card, and share your phone's mobile data connection via USB or as a portable Wi-Fi hotspot.

7.1 WLAN

WLAN is a wireless networking technology that can provide internet access at distance of up to 100 meters, depending on the Wi-Fi router and your surroundings. You can configure the WLAN as follow:

- **Main menu--> Settings--> WLAN**, check **WLAN** to turn it on.
- Enter **WLAN**. The phone scans for available Wi-Fi networks and displays the names of those it finds. Secured networks are indicated with a Lock icon. If the phone finds a network, you connected previously, It connects to it.

- Touch a network to connect to it.
If the network is open, you are prompted to confirm that you want to connect to that network by touching connect.
If the network is secured, you're prompted to enter a password or other credentials

7.2 Bluetooth

Bluetooth is a short-range wireless communications technology that devices can use to exchange information over a distance of about 10 meters. The most common Bluetooth devices are headphones for making calls or listening to music, hands-free kits for cars , and other portable device, including laptops and cell phones.

7.2.1 To send a file

- **Main menu--> Settings--> Bluetooth**, check **Bluetooth** to turn it on.
- Enter **File manager** to select a file and long press it, Select **Share--> Bluetooth**.
- Touch **Scan for devices**, the phone will scan for and display the IDs of all available Bluetooth devices in range.
- Touch the ID of the other device in the list to pair them. After paired the file will be sent.

7.2.2 To receive a file

- **Main menu--> Settings--> Bluetooth**, check **Bluetooth** to turn it on. Ensure the **Bluetooth settings--> Discoverable** is on.
- After paired, the phone will receive the file. The file you received will save to the "Bluetooth" file folder on the SD card.

7.2.3 To connect to a Handsfree device

- **Main menu--> Settings--> Bluetooth**, Select **"Search for devices"**;
- Turn on the Handsfree device, Select the Handsfree device in the list to pair.
- After paired, you can use the Handsfree device to listen music and receive call.

7.3 Connecting to a computer via USB

You can connect your phone to a computer with a USB cable, to transfer music, pictures, and other files between your phone's SD card and the computer.

When connecting your phone to a computer and mounting its SD card, you must follow your computer's instructions for connecting and disconnecting USB devices, to avoid damaging or corrupting the files on your SD card.

You can't share your phone's data connection and SD card via USB cable at the same time. If you are using USB tethering, you must turn that off first.

7.3.1 To connect your phone to a computer via USB

1. Use the USB cable that came with your phone to connect the phone to a USB port on your computer. You receive a notification that the USB is connected.
2. Open the notification panel and touch **USB connected**.
3. Touch **Turn on USB storage** in the screen that opens to confirm that you want to transfer files. When the phone is connected as USB storage, the screen indicates that

USB storage is in use and you receive a notification. Your phone's SD card is mounted as a drive on your computer. You can now copy files to and from the SD card.

During this time, you can't access the SD card from your phone, so you can't use applications that rely on the SD card, such as camera, Gallery, and Music. You also can't share your phone's data connection with your computer via USB.

7.3.2 To disable phone calls (Airplane mode)

Some locations may require you to turn off your phone's mobile, Wi-Fi, and Bluetooth wireless connections. You can turn off all these wireless connections at once by placing your phone in Airplane mode.

1. Press & hold the **Power** button
2. Touch **Airplane mode**.

8. Health and safety

Please read these simple guidelines. Not following them may be dangerous or illegal.

SAR Compliance

- Your phone is designed not to exceed the limits of emission of radio waves recommended by international guidelines.
- SAR (specific absorption rate) is the measurement of body-absorbed RF quantity when the phone is in use. SAR value is ascertained according to the highest RF level generated during laboratory tests.
- The SAR value of the phone may depend on factors such as proximity to the network tower, use of accessories and other enhancements.
- The true SAR level during normal phone usage will be much lower than this level.
- The highest SAR value of this device at the head and body are 1.29 W/kg and 0.827 W/kg respectively averaged over 1.5cm gap of human tissue.

SAR Recommendations

- Use a wireless hands-free system (headphone, headset) with a low power Bluetooth emitter.
- Please keep your calls short and use SMS whenever more convenient. This advice applies especially to children, adolescents and pregnant women
- Make sure the cell phone has a low SAR.
- Prefer to use your cell phone when the signal quality is good.
- People having active medical implants should preferably keep the cell phone at least 15 cm away from the implant.
- Maintain a preferable distance of 15 mm from the device.

Safe Driving

- Do not use the phone while driving. When you have to use the phone, please use the personal hands-free kit.
- Please do not put the phone onto any passenger seat or any place from which it may fall down in case of vehicular collision or emergency braking.

During Flight

- Flight is influenced by interference caused by the phone. It is illegal to use a phone on the airplane. Please turn off your phone during a flight.

In Hospitals

- Your Phone's radio waves may interfere with the functioning of inadequately shielded medical devices. Consult a physician or the manufacturer of the medical device to determine whether they are adequately shielded from external Radio Frequency. Switch off your device when regulations posted instruct you to do so.
- To avoid potential interference with implanted medical devices such as a pacemaker or cardioverter defibrillator:
- Always keep your phone at least 15.3 centimeters (6 inches) from the medical device.
- Do not carry the wireless device in a breast pocket.
- Turn off the phone if there is any reason to suspect that interference is taking place.
- Follow the manufacturer directions for the implanted medical device.
- If you have any questions about using your wireless device with an implanted medical device, consult your health care provider.

Unsafe Areas

- Please turn off your phone when you are close to a gas station or in the vicinity of any place where fuel and chemical preparations, or any other dangerous goods are stored.

Recycle Your Phone



The WEEE logo (shown at the left) appears on the product (battery, handset, and charger) to indicate that this product must not be disposed off or dumped with your other household wastes. You are liable to dispose of all your electronic or electrical waste equipment by relocating over to the specified collection point for recycling, of such hazardous waste. Collection and proper recovery of your electronic waste equipments at the time of disposal will allow us to help preserve the environment.