

ARCHOS Access 50^S

Quick start guide

Guide de démarrage rapide -
Schnellstartanleitung - Guía
de inicio rápido - Guida rapida
- Snelstartgids - Guia rápido -
Инструкция по началу работы
- Skrócona instrukcja obsługi -
Короткий посібник - Rychlý návod
- Příručka pre rýchly štart



twitter.com/archos



www.facebook.com/archos



<https://blog.archos.com/>



<http://faq.archos.com/>



www.archos.com, click
Support > After-sales support



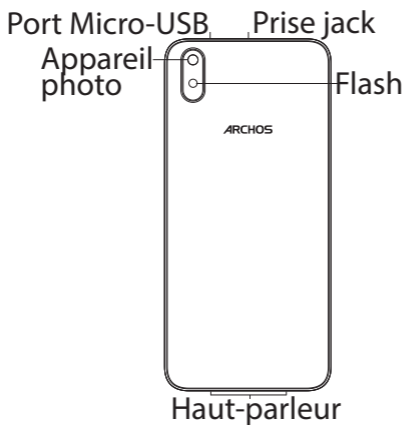
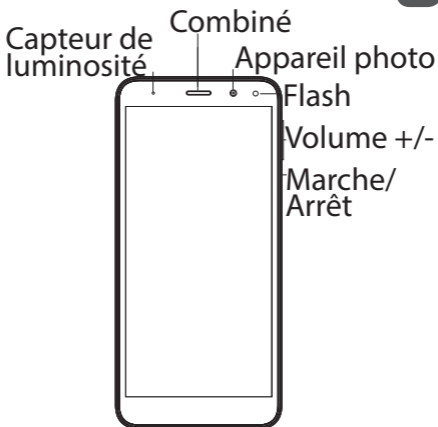
www.archos.com, cliquez
Support > Téléchargements >
Déclaration de conformité

Ce manuel d'utilisation est la version originale.

Livret de garantie, juridique et de sécurité : www.archos.com/support/warranty.html

Description de l'appareil

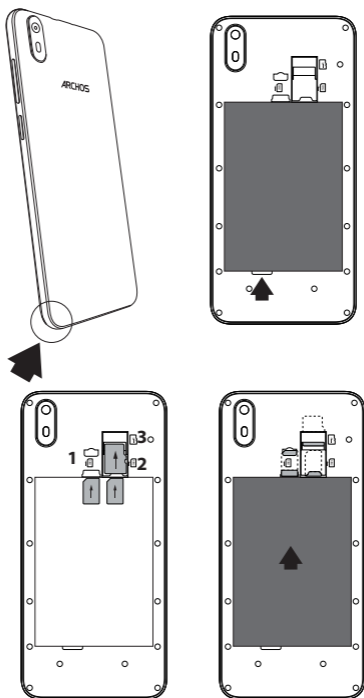
FR



FR

Démarrage

Lorsque vous insérez une carte SIM ou une carte micro-SD, conformez-vous au schéma pour ne pas endommager la carte ou l'emplacement.



4G/3G/2G	SIM 1
4G/3G/2G	SIM 2
Micro-SD card	3

Matériel

Processeur	Spreadtrum SC9832E - Quad Core @ 1.4 GHz
Carte graphique	Mali-T820 MP1-600MHz
Mémoire vive	1 Giga
Stockage interne	8 Giga
Stockage extensible	Oui, Micro SD jusqu'à 64 Giga
Taille & Poids	141*65.5*9.3 mm ; 130g
Ecran	5 pouces
Taille diagonale	960x480 pixels
Résolution	TN, 2.5D curved
Type de technologie	

Logiciel

Système d'exploitation	Android 8.1 Oreo (Go Edition)
Boutique d'applications	Google Play Store
Navigateur Internet	Google Chrome
Assistance vocale	Google AssistantGo
Applications Google	GmailGo, MapsGo, YoutubeGo, Drive, Play Music, Photos, Calendar, Play Movie, Duo, Contacts, Messages

Technologies sans fil

Placement et type de cartes SIM	2x Nano SIM
2G	Oui ; 850 / 900 / 1800 / 1900 MHz
3G	Oui ; 900 / 2100 MHz
4G	Oui ; 800 / 1800 / 2600 MHz
Taux de données	150Mbps / 50Mbps in 4G, DC-HSPA+ 42Mbps / 11Mbps in 3G
WiFi	b/g/n
Wifi Direct Wifi Display	Yes
Bluetooth	4.2 + LE
GPS	Yes, GPS and Glonass
FM Radio	Yes
SAR/DAS	- Head Max : xxx W/Kg (10g) - Body Max: xxx W/Kg (10g)

Appareil photo

Appareil photo avant	2MP* FF
Appareil photo arrière	8MP* AF
Enregistrement vidéo	1080p at 30fps

Energie

Taille et type de Batterie	2000mAh Lion
Poids de la batterie	37g
Chargeur	5V 600mA micro USB

Multimédia

Lecture vidéo	H.264, MPEG-4, MPG, MP4, 3GP, MKV, AVI, WMV, FLV, RM, MOV
Lecture audio	AAC, AAC+, AMR, MP3, MIDI, WAVE, WMA, FLAC, OGG
Visionneuse d'images	JPEG, BMP, PNG, GIF

Capteurs et ports

Haut-parleurs	Oui
Sortie audio	Mini-jack 3.5mm
Microphone	Oui
Capteur de proximité	Oui
Capteur 3D G-sensor	Oui
Gyrocompas/Boussole	Non / Non
USB	Micro USB
USB OTG	Non



twitter.com/archos



www.facebook.com/archos



<https://blog.archos.com/>



<http://faq.archos.com/>



www.archos.com, click
Support > After-sales support



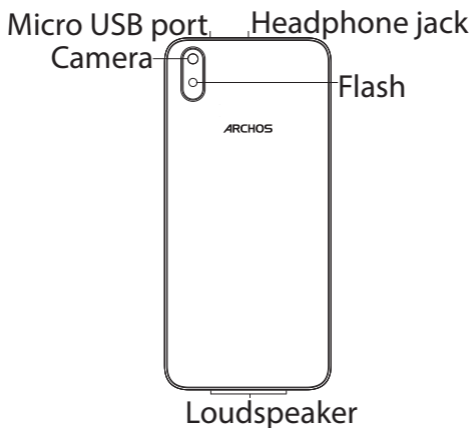
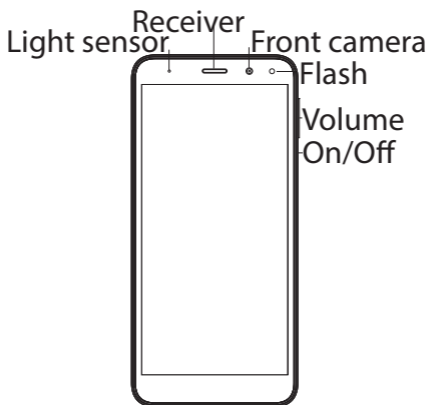
www.archos.com, click
Support > Downloads >
Declaration of conformity

This is a translation of the original version

Warranty, Legal and Safety booklet:
www.archos.com/support/warranty.html

Describing your device

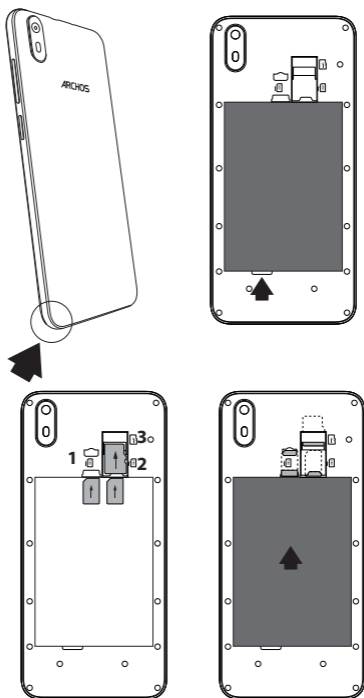
EN



EN

Getting started

When inserting your SIM card or micro-SD card, make sure to follow the illustration, otherwise you may damage the slot or the card.



4G/3G/2G	SIM 1
4G/3G/2G	SIM 2
Micro-SD card	3

 twitter.com/archos

 www.facebook.com/archos

 <https://blog.archos.com/>

 <http://faq.archos.com/>

 www.archos.com, klicken Sie auf Support > After-Sales-Support

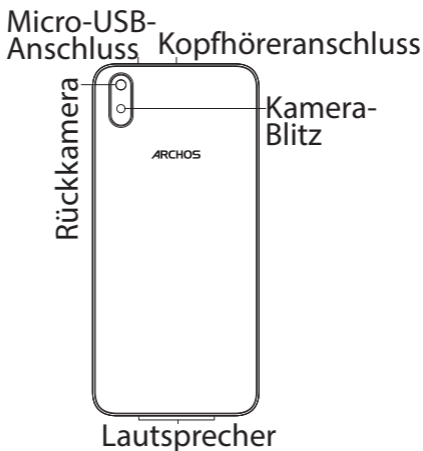
 www.archos.com, klicken Sie auf Support > Downloads > Konformitätserklärung

Dies ist eine Übersetzung der Originalversion

Garantie, Rechts- und Sicherheitshandbuch : www.archos.com/support/warranty.html

DE

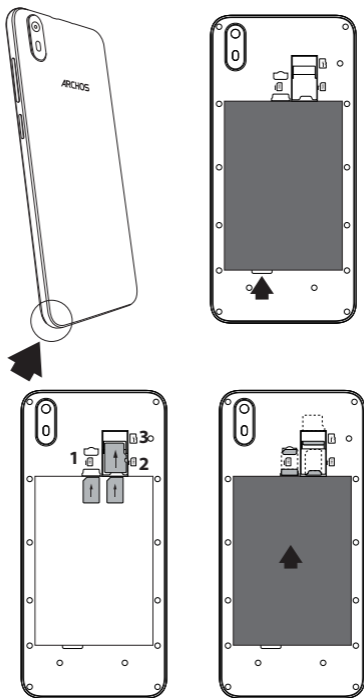
Beschreibung des Geräts



Starten

DE

Beachten Sie beim Einführen der SIM-Karte oder micro-SD-Karte unbedingt die Illustration, der Steckplatz oder die Karte könnten sonst beschädigt werden.



4G/3G/2G	SIM 1
4G/3G/2G	SIM 2
Micro-SD card	3



twitter.com/archos



www.facebook.com/archos



<https://blog.archos.com/>



<http://faq.archos.com/>



www.archos.com, haga clic en Support (Asistencia) > After-sales support (Asistencia posventa)

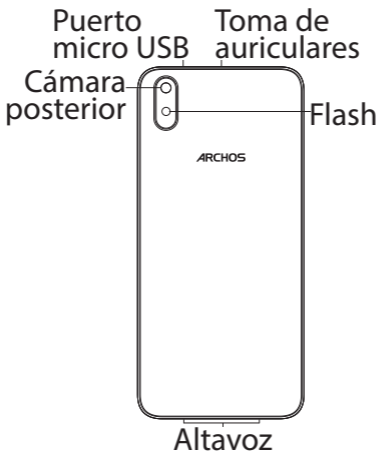
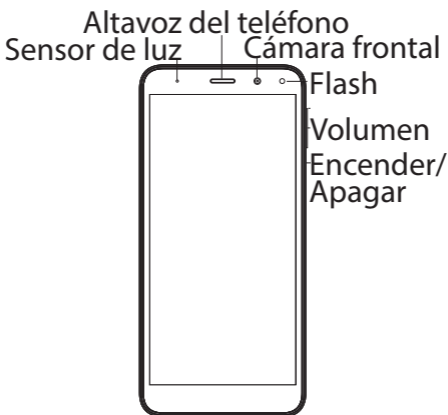


www.archos.com, haga clic en Support (Asistencia) > Downloads (Descargas) > Declaration of conformity (Declaración de conformidad)

Esta es una traducción de la versión original

Garantía, legal y libro de Seguridad:
www.archos.com/support/warranty.html

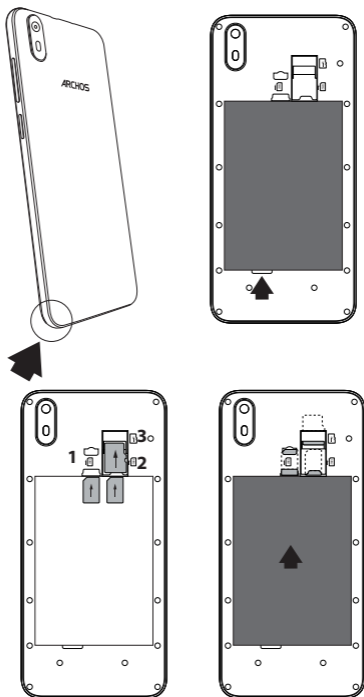
Descripción de su dispositivo **ES**



ES

Primeros pasos

Al insertar una tarjeta SIM o una tarjeta micro SD, asegúrese de hacerlo conforme a la ilustración, de lo contrario podría dañar la ranura o la tarjeta.



4G/3G/2G	SIM 1
4G/3G/2G	SIM 2
Micro-SD card	3



twitter.com/archos



www.facebook.com/archos



<https://blog.archos.com/>



<http://faq.archos.com/>



www.archos.com, fai clic su
Assistenza > Supporto post
vendita

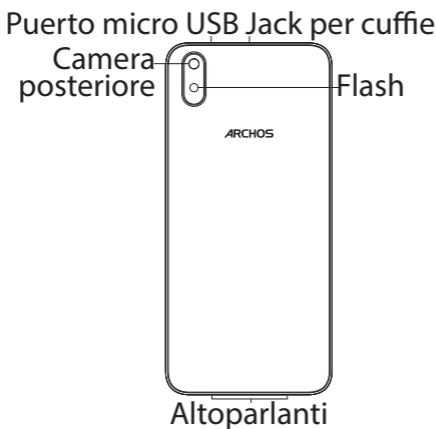


www.archos.com, fai clic
Assistenza > Download >
Dichiarazione di conformità

Questa è una traduzione della
versione originale

Garanzia, legale e libretto di
sicurezza: [www.archos.com/
support/warranty.html](http://www.archos.com/support/warranty.html)

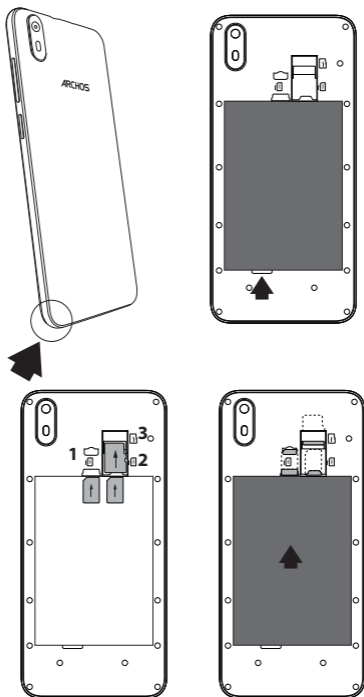
IT Descripción de su dispositivo



Primeros pasos

IT

Al insertar una tarjeta SIM o una tarjeta micro SD, asegúrese de hacerlo conforme a la ilustración, de lo contrario podría dañar la ranura o la tarjeta.



4G/3G/2G	SIM 1
4G/3G/2G	SIM 2
Micro-SD card	3



twitter.com/archos



www.facebook.com/archos



<https://blog.archos.com/>



<http://faq.archos.com/>



www.archos.com, klik op
Support > After-sales support



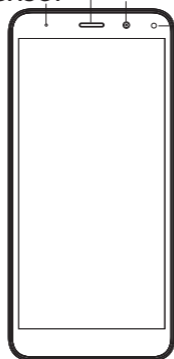
www.archos.com, click
Support > Downloads >
Declaration of conformity
[Conformiteitsverklaring]

Dit is een vertaling van de originele
versie

Garantie, juridisch en
veiligheidsboekje: www.archos.com/support/warranty.html

Beschrijving van het apparaat NL

Telefoonspaker Camera aan de
Lichtsensior voorkant



Flits

Volume

Aan/Uit

Micro-USB-poort Hoofdtelefoonaansluiting

Camera
aan de
achterkant

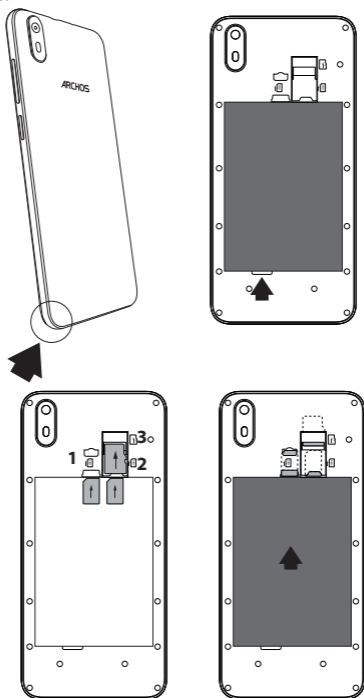


Flits

Luidspreker

Montage

Kijk tijdens het plaatsen van een SIM-kaart of micro-SD-kaart goed naar de afbeelding. Anders beschadigt u mogelijk de sleuf of de kaart.



4G/3G/2G	SIM 1
4G/3G/2G	SIM 2
Micro-SD card	3

Junte-se a nós

PT



twitter.com/archos



www.facebook.com/archos



<https://blog.archos.com/>



<http://faq.archos.com/>



www.archos.com, clique em Suporte > Suporte pós-venda



www.archos.com, clique em Suporte > Transferências > Declaração de conformidade

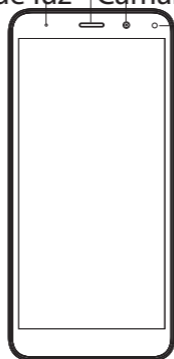
Esta é uma tradução da versão original

Garantia, Legal e folheto de segurança: www.archos.com/support/warranty.html

PT Descrição do seu dispositivo

Altifalante do telemóvel

Sensor de luz | Câmara dianteira



Flash

Volume

Ligar/
Desligar

Porta Micro-USB | Entrada para auscultadores

Câmara traseira



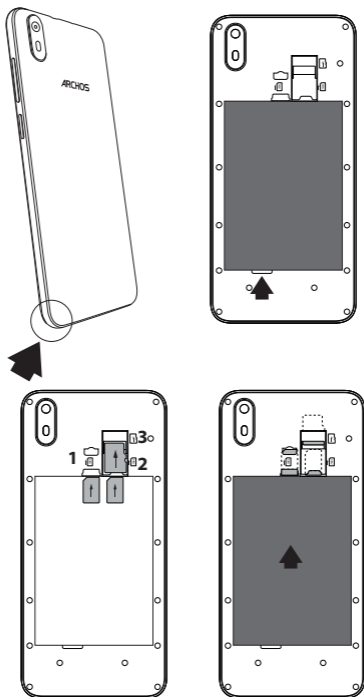
Flash

Altifalante

Montagem

PT

Quando inserir um cartão SIM ou um cartão micro-SD, certifique-se de que segue a ilustração, senão poderá danificar a ranhura ou o cartão.



4G/3G/2G	SIM 1
4G/3G/2G	SIM 2
Micro-SD card	3

RU



Присоединяйтесь к нам!

 twitter.com/archos

 www.facebook.com/archos

 <https://blog.archos.com/>

 <http://faq.archos.com/>

 на странице www.archos.com
выберите меню Поддержка >
Послепродажная поддержка
на странице www.archos.com
 выберите меню Поддержка
> Загрузки > Декларация
соответствия

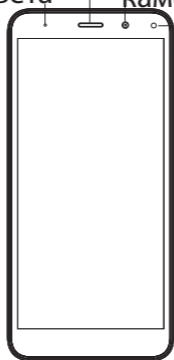
Это перевод оригинальной
версии

Брошюра по гарантии, правовому
обеспечению и безопасности:
[www.archos.com/support/warranty.
html](http://www.archos.com/support/warranty.html)

Описание устройства

RU

Динамик телефона
Датчик света
Фронтальная камера
Фонарик
Громкость
ВКЛ./ВЫКЛ.



Порт micro-USB Разъем наушников

Задняя камера
Фонарик

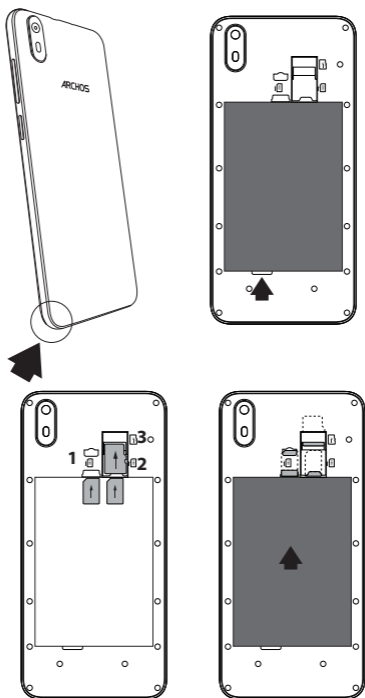


Громкоговоритель

RU

Сборка

При установке SIM-карты или карты micro-SD следует точно сверять свои действия с изображением, в противном случае можно повредить гнездо или карту.



4G/3G/2G	SIM 1
4G/3G/2G	SIM 2
Micro-SD card	3

Dołącz do nas

PL


 twitter.com/archos

 www.facebook.com/archos

 <https://blog.archos.com/>

 <http://faq.archos.com/>

 www.archos.com, kliknij
Support > After-sales support

 www.archos.com, kliknij
Support > Downloads >
Declaration of conformity

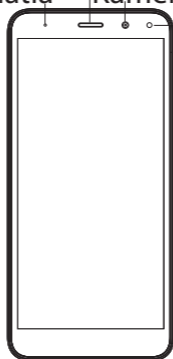
To jest tłumaczenie oryginalnej
wersji

Gwarancja, prawne i broszura
bezpieczeństwa: [www.archos.com/
support/warranty.html](http://www.archos.com/support/warranty.html)

PL

Opis urządzenia

Głośnik
Czujnik światła Kamera przednia



Latarka

Głośność

Przycisk
wł./wył.

Port micro USB Wejście słuchawkowe

Kamera
tylna



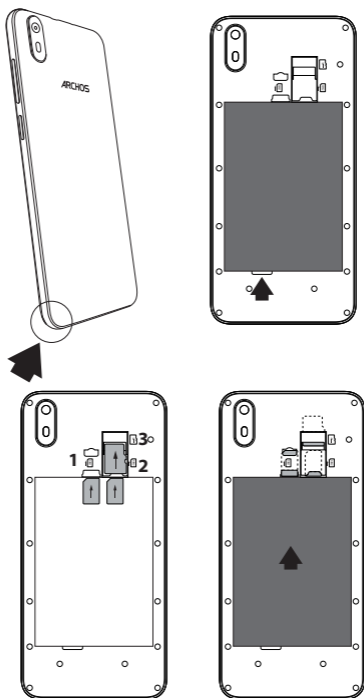
Latarka

Głośnik

Montaż

PL

Kartę SIM i kartę micro-SD należy wkładać dokładnie tak, jak jest pokazane na ilustracji, aby nie uszkodzić gniazda ani karty.



4G/3G/2G	SIM 1
4G/3G/2G	SIM 2
Micro-SD card	3



Üdvözljük körünkben!


 twitter.com/archos

 www.facebook.com/archos

 <https://blog.archos.com/>

 <http://faq.archos.com/>

 www.archos.com, kattintson a Támogatás > Szerviz támogatás menüpontra

 www.archos.com, kattintson a Támogatás > Letöltések > Megfelelőségi nyilatkozat menüpontra

Ez az eredeti verzió fordítása

Jótállás, Jogi és biztonsági brosúra:
www.archos.com/support/warranty.html

A készülék leírása

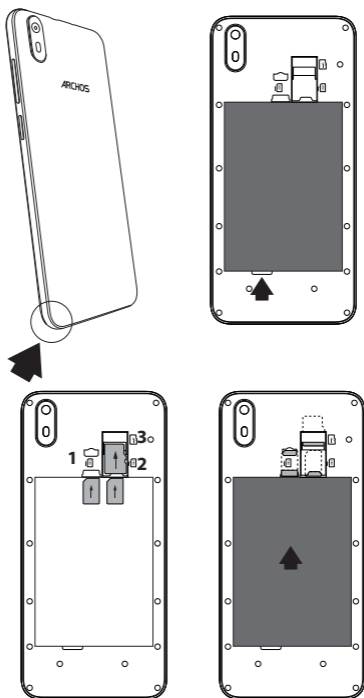
HU



HU

Összeszerelés

A SIM kártyát és a micro SD-kártyát feltétlenül az ábrán látható módon helyezze be, ellenkező esetben megsérülhet a nyílás vagy a kártya.



4G/3G/2G	SIM 1
4G/3G/2G	SIM 2
Micro-SD card	3



twitter.com/archos



[www.facebook.com/
archosukraine](https://www.facebook.com/archosukraine)



<https://blog.archos.com/>



<http://faq.archos.com/>



www.archos.com/ua, оберіть
Підтримка



www.archos.com, оберіть
Підтримка > Завантаження >
Декларація про відповідність

Це переклад первинної версії

Гарантія, правова і буклет з
безпеки: [www.archos.com/
support/warranty.html](http://www.archos.com/support/warranty.html)

UA

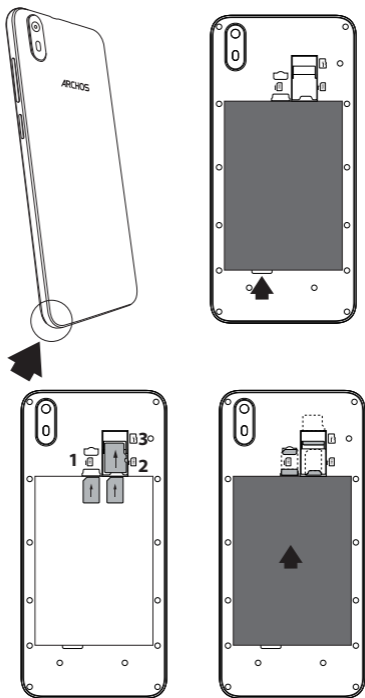
Опис пристрою



Збирання пристрою

UA

При установці вашої SIM-карти або micro-SD карти, переконайтеся, що ви слідували ілюстрації, в іншому випадку ви можете пошкодити слот або карту.



4G/3G/2G	SIM 1
4G/3G/2G	SIM 2
Micro-SD card	3



Návod k použití



twitter.com/archos



www.facebook.com/archos



<https://blog.archos.com/>



<http://faq.archos.com/>



www.archos.com, klikněte
na možnost Podpora >
Poprodejní podpora



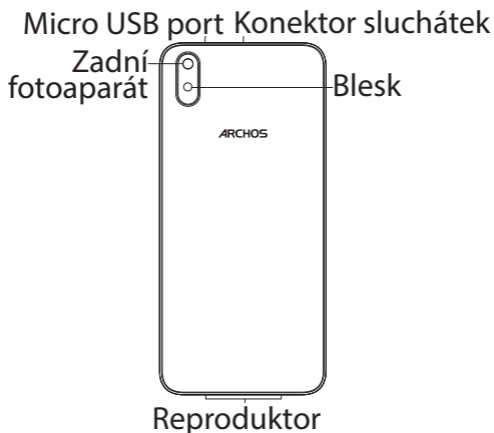
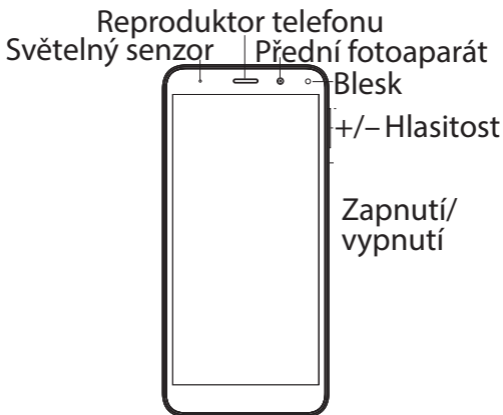
www.archos.com, klikněte na
možnost Podpora > Ke stažení
> Prohlášení o shodě

Toto je překlad původní verze

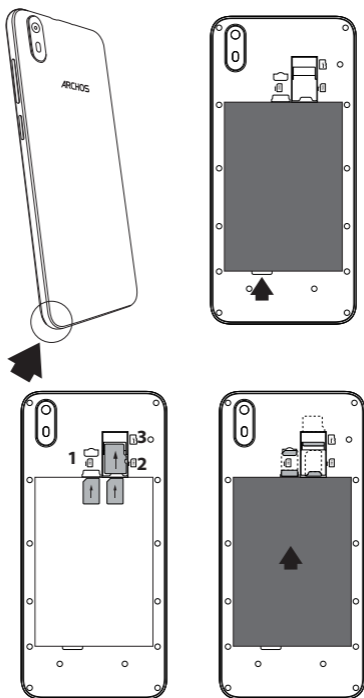
Záruka, Právní a bezpečnostní
brožura: www.archos.com/support/warranty.html

Popis zařízení

CZ



Při vkládání SIM karty nebo Micro SD karty se řiďte obrázkem, jinak by mohlo dojít k poškození slotu či karty.



4G/3G/2G	SIM 1
4G/3G/2G	SIM 2
Micro-SD card	3

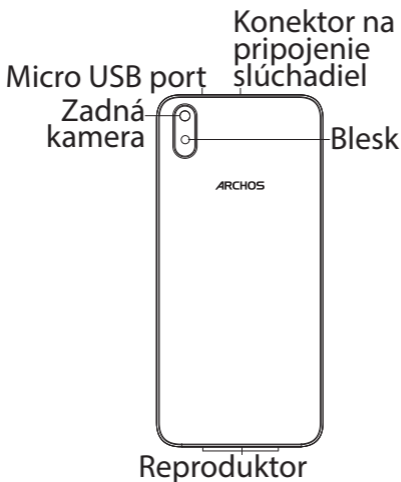
-  twitter.com/archos
-  www.facebook.com/archos
-  <https://blog.archos.com/>
-  <http://faq.archos.com/>
-  www.archos.com, kliknite na položku Podpora > Popredajná podpora
-  www.archos.com, kliknite na položku Podpora > Súbory na prevzatie > Prehlásenie o zhode

Toto je preklad pôvodnej verzie

Záruka, Právne a bezpečnostné brožúra: www.archos.com/support/warranty.html

SK

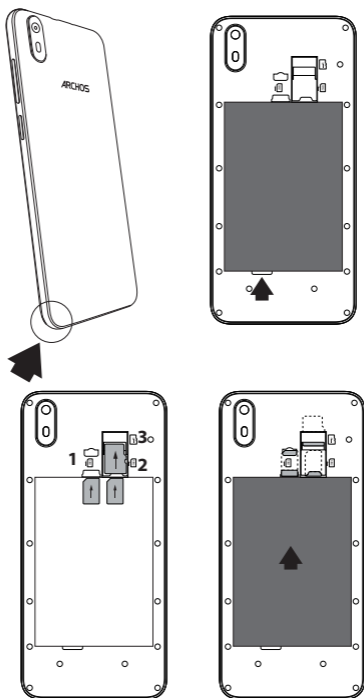
Popis zariadenia



Zloženie

SK

Pri vkladaní SIM karty alebo microSD karty postupujte podľa ilustrácie. Inak môžete poškodiť zásuvku alebo kartu.



4G/3G/2G	SIM 1
4G/3G/2G	SIM 2
Micro-SD card	3

National restrictions

This device is intended for home and office use in all EU countries (and other countries following the EU directive 2014/53/EU) without any limitation except for the countries mentioned below:

Country	Restriction	Reason/remark
Bulgaria	None	General authorization required for outdoor use and public service
Italy	None	If used outside of own premises, general authorization is required.
Luxembourg	None	General authorization required for network and service supply (not for spectrum)
Norway	Implemented	This subsection does not apply for the geographical area within a radius of 20 km from the centre of Ny-Alesund
Russian Federation	None	Only for indoor applications

Note: Frequencies 2454-2483.5MHZ are restricted to indoor use in France.

SAR

After the laboratory measurements, when it is kept 5 cm from your body the SAR values for this mobile are :

- Head Max: 0.790W/Kg (10g)
- Body Max: 1.280 W/Kg (10g)

Archos company (Contact address : ARCHOS SA 12 Rue Ampère 91430 Igny France) declares that this smartphone ARCHOS Access 50S is in compliance with the essential requirements and other relevant provisions of Directive 2014/53/EU:
<https://www.archos.com/products/conformity.html>

Par la présente, ARCHOS (adresse de contact : ARCHOS SA 12 Rue Ampère 91430 Igny France) déclare que le smartphone ARCHOS Access 50S est conforme aux exigences essentielles et aux autres dispositions pertinentes de la directive 2014/53/EU. La déclaration de conformité peut être consultée sur le site : <https://www.archos.com/products/conformity.html>



± U V		
7	U	
GSM B2/B3	26~ 32dBm	
GSM B5/B8	29~ 35dBm	
UMTS B1/B8	20~ 25dBm	
FDD LTE B1/B3/B7/B20	21~ 26dBm	
± O V		
o	7	U -@h "
802.11b	2.412~ 2.472GHz	15.98dBm
802.11g	2.412~ 2.472GHz	15.98dBm
802.11n(HT20)	2.412~ 2.472GHz	16.01dBm
802.11n(HT40)	2.412~ 2.472GHz	17.53dBm
"		
" †	7 k	U -@h "
EDR	2.402~ 2.480GHz	6.56dBm
BLE	2.402~ 2.480GHz	1.40dBm

Declaration of Conformity

We, the undersigned (☑Manufacturer / ☐ The manufacturers authorized representative established within EEA):

Company	ARCHOS S.A.
Address	12, rue Ampere 91430 Igny
Country	France
Telephone number	+(33)1 69 33 16 90
Telefax number	+(33)1 69 33 16 99
E-mail	wu@archos.com

Certify and declare under our responsibility that the following product:

Product Description	4G Smart Phone
Manufacturer	ARCHOS S.A.
Brand Name	ARCHOS
Model/Type	AC50ASS, Access 50S

Is tested to and conforms with the essential test suites included in the following standards, which are in force within the EEA:

Standard	Issue date	Reference to report /file
Draft ETSI EN 301 489-1 V2.2.0	2017-03	AGC01085181001EE01
Draft ETSI EN 301 489-17 V3.2.0	2017-03	AGC01085181001EE01
Draft ETSI EN 301 489-19 V2.1.0	2017-03	AGC01085181001EE01
Draft ETSI EN 301 489-52 V1.1.0	2016-11	AGC01085181001EE01
EN 55032	2015/AC:2016	AGC01085181001EE02
EN 55035	2017	AGC01085181001EE02
EN 61000-3-2	2014	AGC01085181001EE02
EN 61000-3-3	2013	AGC01085181001EE02
ETSI EN 300 328 V2.1.1 (BR&ERD)	2016-11	AGC01085181001EE04
ETSI EN 300 328 V2.1.1 (BLE)	2016-11	AGC01085181001EE11
ETSI EN 300 328 V2.1.1 (Wifi)	2016-11	AGC01085181001EE05
ETSI EN 303 413 V1.1.1 (GPS)	2017-06	AGC01085181001EE06
ETSI EN 301 511 V12.5.1 (GSM)	2017-03	AGC01085181001EE03
ETSI EN 301 908-1 V11.1.1 (WCDMA)	2016-07	AGC01085181001EE07
ETSI EN 301 908-2 V11.1.2 (WCDMA)	2017-08	AGC01085181001EE07
ETSI EN 301 908-13 V11.1.2 (LTE)	2017-07	AGC01085181001EE10
Final draft ETSI EN 303 345 V1.1.7 (FM)	2017-03	AGC01085181001EE14
EN 62479	2010	AGC01085181001EH01
EN 50360	2017	AGC01085181001EH01
EN 62209-1	2016	AGC01085181001EH01
EN 62209-2	2010	AGC01085181001EH01
EN 50566	2017	AGC01085181001EH01
EN 60950-1	2006+A11:2009+A1:2010+A1:2.2011+A2: 2013	AGC01085181001ES01
EN 50332-1	2013	AGC01085181001ES04
EN 50332-2	2013	AGC01085181001ES04

And therefore complies with the essential requirements of the following directives:


Directive Name	Directive number	Further identification
RED Directive	2014/53/EU	
EMC Directive	2014/30/EU	
LVD Directive	2014/35/EU	Year of affixing the CE Marking: 2018
ERP Directive	2009/125/EC	
RoHS Directive	2011/65/EU	
Battery Directive	2006/66/EC	

The following Notified Bodies have been consulted in the Conformity Assessment procedure of RED Directive (whenever applicable):

Notified Body number	0700
PHOENIX TESTLAB GmbH Königswinkel 10 D-32825 Blomberg, Germany http://ec.europa.eu/growth/tools-databases/nando/index.cfm?fuseaction=directive.nb&refe_cd=EPOS_44015	

The technical documentation as required by the conformity assessment procedure is kept at the following address for a period ending at least 10 years after the last product has been manufactured at the disposal of the relevant national authorities of any Member State for inspection:

Company	ARCHOS S.A.
Address	12,rue Ampere 91430 Igny
Country	France
Telephone number	+(86)75583734678
Telefax number	+(86)75583734621
E-mail	wu@archos.com
Product is CE-marked in	Europe

	Name of authorized officer:	Jacky WU	Title of authorized officer	General Manager
	Drawn up in			
	Date		2018.10.29	
	ARCHOS SA 12, rue Ampere 91430 Igny - France SA au capital de 1 216 344 euros RCS Paris 483 863 821 - N°F 122 0 TVA FR 42 343 863 821			
Signature and Company Stamp				

Déclaration de Conformité

Nous, soussignés Fabricant

Entreprise	ARCHOS S.A.
Adresse	12, rue Ampere 91430 Igny
Pays	France
Numéro de téléphone	+(33)1 69 33 16 90
Numéro de fax	+(33)1 69 33 16 99
E-mail	wu@archos.com

Certifions et déclarons que le produit suivant:

Description Produit	4G Smart Phone
Fabricant	ARCHOS S.A.
Marque	ARCHOS
Modèle	AC50ASS, Access 50S

Est testé et conforme aux ensembles de tests essentiels inclus dans les normes suivantes, qui sont en vigueur dans l'UE:

Standard	Date de délivrance	Rapport de référence
Draft ETSI EN 301 489-1 V2.2.0	2017-03	AGC01085181001EE01
Draft ETSI EN 301 489-17 V3.2.0	2017-03	AGC01085181001EE01
Draft ETSI EN 301 489-19 V2.1.0	2017-03	AGC01085181001EE01
Draft ETSI EN 301 489-52 V1.1.0	2016-11	AGC01085181001EE01
EN 55032	2015	AGC01085181001EE02
EN 55035	2017	AGC01085181001EE02
EN 61000-3-2	2014	AGC01085181001EE02
EN 61000-3-3	2013	AGC01085181001EE02
ETSI EN 300 328 V2.1.1 (ERD)	2016-11	AGC01085181001EE04
ETSI EN 300 328 V2.1.1 (BLE)	2016-11	AGC01085181001EE11
ETSI EN 300 328 V2.1.1 (WiFi)	2016-11	AGC01085181001EE05
ETSI EN 303 413 V1.1.1 (GPS)	2017-06	AGC01085181001EE06
ETSI EN 301 511 V9.0.2 (GSM)	2003-03	AGC01085181001EE03
ETSI EN 301 908-1 V11.1.1 (WCDMA)	2016-07	AGC01085181001EE07
ETSI EN 301 908-2 V11.1.1 (WCDMA)	2017-08	AGC01085181001EE07
ETSI EN 301 908-13 V11.1.1 (LTE)	2017-07	AGC01085181001EE10
Final draft ETSI EN 303 345 V1.1.7 (FM)	2017-03	AGC01085181001EE14
EN 62479	2010	AGC01085181001EH01
EN 50360	2017	AGC01085181001EH01
EN 62209-1	2016	AGC01085181001EH01
EN 62209-2	2010	AGC01085181001EH01
EN 50566	2017	AGC01085181001EH01
EN 60950-1	2006+A11:2009+A1:2010+A12:2011+A2: 2013	AGC01085181001ES01
EN 50332-1	2013	AGC01085181001ES04
EN 50332-2	2013	AGC01085181001ES04

Et donc conforme aux besoins essentiels des directives suivantes:

Nom de la directive	Numéro de la directive	Identifications
RED Directive	2014/53/EU	
EMC Directive	2014/30/EU	
LVD Directive	2014/35/EU	Année d'apposition du logo CE: 2018
ERP Directive	2009/125/EC	
RoHS Directive	2011/65/EU	
Battery Directive	2006/66/EC	


Les organismes notifiés suivants ont été consultés dans la procédure d'évaluation de la conformité de la

directive RED (Lorsqu'applicable):

Numéro de l'organe notifié	0700
PHOENIX TESTLAB GmbH	
Königswinkel 10	
D-32825 Blomberg, Germany	
http://ec.europa.eu/growth/tools-databases/hando/index.cfm?fuseaction=directive.nbf&ref_cd=EPOS_44015	

La documentation technique requise par la procédure d'évaluation de la conformité est conservée à l'adresse suivante pour une période se terminant au moins dix ans après la fabrication du dernier produit à la disposition des autorités nationales compétentes de tout État membre pour inspection:

Entreprise	ARCHOS S.A.
Adresse	12,rue Ampere 91430 Igny
Pays	France
Téléphone	+(86)75583734678
Fax	+(86)75583734621
E-mail	wu@archos.com

Le produit est marqué CE en:			
Europe	Nom de l'agent habilité:	Jacky WU	Titre l'agent habilité:
	Drawn up in	ARCHOS SA	General Manager
	Date	12, rue Ampere - F-91430 Igny - F28108 SA au capital de 1 250 000 Euros RCS Nanterre 245 952 871 - NAF 723 C TVA FR 82 543 903 821	2018.10.29
	Signature et tampon		