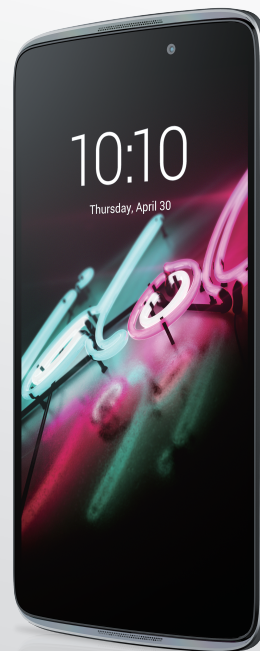


ALCATEL
onetouch.
idol3

6045K



www.alcatelonetouch.com

For more information on how to use the phone, please go to www.alcatelonetouch.com and download the complete user manual. Moreover, on the website, you can also find answers to frequently asked questions, upgrade the software via Mobile Upgrade, and so much more.

ALCATEL
onetouch.

ALCATEL
onetouch.

Table of Contents

Safety and use	4
General information	11
1 Your mobile	13
1.1 Keys and connectors.....	13
1.2 Getting started	15
1.3 Home screen.....	18
2 Text input	29
2.1 Using the Onscreen Keyboard.....	29
2.2 Text editing.....	30
3 Phone call, Call log and People	31
3.1 Call.....	31
3.2 Call log.....	37
3.3 Contacts.....	38
4 Messaging, Gmail/Email, Google Hangouts	44
4.1 Messaging	44
4.2 Gmail/Email.....	50
4.3 Google Hangouts	56
5 Calendar & Alarm clock & Calculator	57
5.1 Calendar	57
5.2 Time	59
5.3 Calculator.....	61
6 Getting connected	63
6.1 Connecting to the Internet	63
6.2 Browser.....	65
6.3 Connecting to Bluetooth devices.....	73
6.4 Connecting to a computer	74
6.5 Sharing your phone's mobile data connection.....	75

6.6 Connecting to virtual private networks.....	76
7 Google Play Store	78
7.1 Locate the item you want to download and install.....	78
7.2 Download and install.....	79
7.3 Manage your downloads.....	81
8 Multimedia applications	83
8.1 Camera/Camcorder.....	83
8.2 Gallery	85
8.3 YouTube.....	87
8.4 Mix.....	88
9 Google Maps	90
9.1 Get My Location	90
9.2 Search for a location	91
9.3 Get driving, public transport or walking directions.....	92
9.4 Share a location	93
10 Others	94
10.1 File Manager	94
10.2 Sound Recorder	94
10.3 Radio	95
10.4 Notes.....	96
10.5 Other applications	96
11 Settings	97
11.1 Wireless & network.....	97
11.2 Device.....	101
11.3 Personal.....	105
11.4 System.....	109
12 Making the most of your phone	113
12.1 Smart Suite	113

12.2 Upgrade.....	114
13 Telephone warranty.....	116
14 Accessories	118
15 Troubleshooting	119
16 Specifications.....	123

Safety and use.....

We recommend that you read this chapter carefully before using your phone. The manufacturer disclaims any liability for damage, which may result as a consequence of improper use or use contrary to the instructions contained herein.

• TRAFFIC SAFETY:

Given that studies show that using a mobile phone while driving a vehicle constitutes a real risk, even when the hands-free kit is used (car kit, headset...), drivers are requested to refrain from using their mobile when the vehicle is not parked.

When driving, do not use your phone and headphone to listen to music or the radio. Using a headphone can be dangerous and forbidden in some areas.

When switched on, your phone emits electromagnetic waves that can interfere with the vehicle's electronic systems such as ABS anti-lock brakes or airbags. To ensure that there is no problem:

- do not place your phone on top of the dashboard or within an airbag deployment area,
- check with your car dealer or the car manufacturer to make sure that the dashboard is adequately shielded from mobile phone RF energy.

• CONDITIONS OF USE:

You are advised to switch off the telephone from time to time to optimise its performance.

Switch the phone off before boarding an aircraft.

Switch the phone off when you are in health care facilities, except in designated areas. As with many other types of equipment now in regular use, mobile telephones can interfere with other electrical or electronic devices, or equipment using radio frequency.

Switch the phone off when you are near gas or flammable liquids. Strictly obey all signs and instructions posted in a fuel depot, petrol station, or chemical plant, or in any potentially explosive atmosphere.

When the phone is switched on, it should be kept at least 15 cm from any medical device such as a pacemaker, a hearing aid or insulin pump, etc. In particular when using the phone, you should hold it against the ear on the opposite side to the device, if any. To avoid hearing impairment, pick up the call before holding your phone to your ear. Also move the handset away from your ear while using the "hands-free" mode because the amplified volume might cause hearing damage.



www.sar-tick.com

This product meets applicable national SAR limits of 2.0 W/kg. The specific maximum SAR values can be found on page 8 of this user guide.

When carrying the product or using it while worn on your body, either use an approved accessory such as a holster or otherwise maintain a distance of 1.5 cm from the body to ensure compliance with RF exposure requirements. Note that the product may be transmitting even if you are not making a phone call.

Do not let children use the phone and/or play with the telephone and accessories without supervision.

Please note that your phone is a unibody device, the back cover and battery are not removable. Do not attempt to disassemble your phone. If you disassemble your phone the warranty will not apply. Also disassembling the phone may damage the battery, and may cause leakage of substances that could create an allergic reaction.

Always handle your phone with care and keep it in a clean and dust-free place.

Do not allow your phone to be exposed to adverse weather or environmental conditions (moisture, humidity, rain, infiltration of liquids, dust, sea air, etc.). The manufacturer's recommended operating temperature range is -10°C to +45°C.

At over 45°C the legibility of the phone's display may be impaired, though this is temporary and not serious.

Emergency call numbers may not be reachable on all cellular networks. You should never rely only on your phone for emergency calls.

Do not open, dismantle or attempt to repair your mobile phone yourself.

Do not drop, throw or bend your mobile phone.

Do not use the phone if the glass made screen, is damaged, cracked or broken to avoid any injury.

Do not paint it.

Use only batteries, battery chargers, and accessories which are recommended by TCL Communication Ltd. and its affiliates and are compatible with your phone model. TCL Communication Ltd. and its affiliates disclaim any liability for damage caused by the use of other chargers or batteries.

Remember to make back-up copies or keep a written record of all important information stored in your phone.

Some people may suffer epileptic seizures or blackouts when exposed to flashing lights, or when playing video games. These seizures or blackouts may occur even if a person never had a previous seizure or blackout. If you have experienced seizures or blackouts, or if you have a family history of such occurrences, please consult your doctor before playing video games on your phone or enabling a flashing-lights feature on your phone.

Parents should monitor their children's use of video games or other features that incorporate flashing lights on the phones. All persons should discontinue use and consult a doctor if any of the following symptoms occur: convulsion, eye or muscle twitching, loss of awareness, involuntary movements, or disorientation. To limit the likelihood of such symptoms, please take the following safety precautions:

- Do not play or use a flashing-lights feature if you are tired or need sleep.
- Take a minimum of a 15-minute break hourly.

- Play in a room in which all lights are on.

- Play at the farthest distance possible from the screen.

- If your hands, wrists, or arms become tired or sore while playing, stop and rest for several hours before playing again.

- If you continue to have sore hands, wrists, or arms during or after playing, stop the game and see a doctor.

When you play games on your phone, you may experience occasional discomfort in your hands, arms, shoulders, neck, or other parts of your body. Follow the instructions to avoid problems such as tendinitis, carpal tunnel syndrome, or other musculoskeletal disorders.



PROTECT YOUR HEARING

To prevent possible hearing damage, do not listen at high volume levels for long periods. Exercise caution when holding your device near your ear while the loudspeaker is in use.

• PRIVACY:

Please note that you must respect the laws and regulations in force in your jurisdiction or other jurisdiction(s) where you will use your mobile phone regarding taking photographs and recording sounds with your mobile telephone. Pursuant to such laws and regulations, it may be strictly forbidden to take photographs and/or to record the voices of other people or any of their personal attributes, and duplicate or distribute them, as this may be considered to be an invasion of privacy. It is the user's sole responsibility to ensure that prior authorisation be obtained, if necessary, in order to record private or confidential conversations or take a photograph of another person; the manufacturer, the seller or vendor of your mobile phone (including the operator) disclaim any liability which may result from the improper use of the mobile phone.

• BATTERY:

Please note your phone is a unibody device, the back cover and battery are not removable. Observe the following precautions:

- Do not attempt to open the back cover,

- Do not attempt to eject, replace and open battery,

- Do not punctuate the back cover of your phone,

- Do not burn or dispose of your phone in household rubbish or store it at temperature above 60°C.

Phone and battery as a unibody device must be disposed of in accordance with locally applicable environmental regulations.



This symbol on your telephone, the battery and the accessories means that these products must be taken to collection points at the end of their life:

- Municipal waste disposal centres with specific bins for these types of equipment
- Collection bins at points of sale.

They will then be recycled, preventing substances being disposed of in the environment, so that their components can be reused.

In European Union countries:

These collection points are accessible free of charge.

All products with this sign must be brought to these collection points.

In non-European Union jurisdictions:

Items of equipment with this symbol are not to be thrown into ordinary bins if your jurisdiction or your region has suitable recycling and collection facilities; instead they are to be taken to collection points for them to be recycled.

CAUTION: RISK OF EXPLOSION IF BATTERY IS REPLACED BY AN INCORRECT TYPE. DISPOSE OF USED BATTERIES ACCORDING TO THE INSTRUCTIONS.

• CHARGERS

Mains powered chargers will operate within the temperature range of: 0°C to 40°C. The chargers designed for your mobile phone meet with the standard for safety of information technology equipment and office equipment use. They are also compliant to the ecodesign directive 2009/125/EC. Due to different applicable electrical specifications, a charger you purchased in one jurisdiction may not work in another jurisdiction. They should be used for this purpose only.

• RADIO WAVES:

Proof of compliance with international standards (ICNIRP) or with European Directive 1999/5/EC (R&TTE) is required of all mobile phone models before they can be put on the market. The protection of the health and safety for the user and any other person is an essential requirement of these standards or this directive.

THIS DEVICE MEETS INTERNATIONAL GUIDELINES FOR EXPOSURE TO RADIO WAVES

Your mobile device is a radio transmitter and receiver. It is designed not to exceed the limits for exposure to radio waves (radio frequency electromagnetic fields) recommended by international guidelines. The guidelines were developed by an independent scientific organization (ICNIRP) and include a substantial safety margin designed to assure the safety of all persons, regardless of age and health.

The radio wave exposure guidelines use a unit of measurement known as the Specific Absorption Rate, or SAR. The SAR limit for mobile devices is 2 W/kg.

Tests for SAR are conducted using standard operating positions with the device transmitting at its highest certified power level in all tested frequency bands. The highest SAR values under the ICNIRP guidelines for this device model are:

Maximum SAR for this model and conditions under which it was recorded.		
Head SAR	GSM 900+Wi-Fi	1.631 W/kg
Body-worn SAR	LTE Band 7+Wi-Fi	0.898 W/kg

During use, the actual SAR values for this device are usually well below the values stated above. This is because, for purposes of system efficiency and to minimise interference on the network, the operating power of your mobile device is automatically decreased when full power is not needed for the call. The lower the power output of the device, the lower its SAR value.

Body-worn SAR testing has been carried out at a separation distance of 1.5 cm. To meet RF exposure guidelines during body-worn operation, the device should be positioned at least this distance away from the body.

If you are not using an approved accessory ensure that whatever product is used is free of any metal and that it positions the phone the indicated distance away from the body.

Organizations such as the World Health Organization and the US Food and Drug Administration have stated that if people are concerned and want to reduce their exposure they could use a hands-free device to keep the phone away from the head and body during phone calls, or reduce the amount of time spent on the phone.

For more information you can go to www.alcatelonetouch.com

Additional information about electromagnetic fields and public health are available on the following site: <http://www.who.int/peh-emf>.

Your telephone is equipped with a built-in antenna. For optimal operation, you should avoid touching it or degrading it.

As mobile devices offer a range of functions, they can be used in positions other than against your ear. In such circumstances the device will be compliant with the guidelines when used with headset or USB data cable. If you are using another accessory ensure that whatever product is used is free of any metal and that it positions the phone at least 1.5 cm away from the body.

Please note by using the device some of your personal data may be shared with the main device. It is under your own responsibility to protect your own personal data, not to share with it with any unauthorised devices or third party devices connected to yours. For products with Wi-Fi features, only connect to trusted Wi-Fi networks. Also when using your product as a hotspot (where available), use network security. These precautions will help prevent unauthorised access to your device. Your product can store personal information in various locations including a SIM card, memory card, and built-in memory. Be sure to remove or clear all personal information before you recycle, return, or give away your product. Choose your apps and updates carefully, and install from trusted sources only. Some apps can impact your product's performance and/or have access to private information including account details, call data, location details and network resources.

Note that any data shared with TCL Communication Ltd. is stored in accordance with applicable data protection legislation. For these purposes TCL Communication Ltd. implements and maintains appropriate technical and organizational measures to protect all personal data, for example against unauthorised or unlawful processing and accidental loss or destruction of or damage to such personal data whereby the measures shall provide a level of security that is appropriate having regard to

- (i) the technical possibilities available,
- (ii) the costs for implementing the measures,
- (iii) the risks involved with the processing of the personal data, and
- (iv) the sensitivity of the personal data processed.

You can access, review and edit your personal information at any time by logging into your user account, visiting your user profile or by contacting us directly. Should you require us to edit or delete your personal data, we may ask you to provide us with evidence of your identity before we can act on your request.

• LICENCES



The Bluetooth® word mark and logos are owned by the Bluetooth SIG, Inc. and any use of such marks by TCL Communication Ltd. and its affiliates is under license. Other trademarks and trade names are those of their respective owners.

ALCATEL ONETOUCH 6045K Bluetooth Declaration ID D026266

The Wi-Fi Logo is a certification mark of the Wi-Fi Alliance.



Google, the Google logo, Android, the Android logo, Google Search™, Google Maps™, Gmail™, YouTube, Google Play Store, Google Latitude™ and Hangouts™ are trademarks of Google Inc.

The Android robot is reproduced or modified from work created and shared by Google and used according to terms described in the Creative Commons 3.0 Attribution License (the text will show when you touch and hold **Google legal in Settings\About phone\Legal information**).⁽¹⁾

You have purchased a product which uses the open source (<http://opensource.org/>) programs mtd, msdosfs, netfilter/iptables and initrd in object code and other open source programs licensed under the GNU General Public License and Apache License.

We will provide you with a complete copy of the corresponding source codes upon request within a period of three years from the distribution of the product by TCT.

You may download the source codes from <http://sourceforge.net/projects/alcatel/files/>. The provision of the source code is free of charge from internet.

⁽¹⁾ May not be available in all countries.

General information

- **Internet address:** www.alcatelonetouch.com
- **Hot Line Number:** see "Services" leaflet or go to our website.
- **Address:** Room 1910-12A, Tower 3, China HK City, 33 Canton Road, Tsimshatsui, Kowloon, Hong Kong
- **Electronic labeling (Elabel) path:** Touch **Settings/Regulatory & Safety** or input ***#07#**, you can find more information about labeling.⁽¹⁾

On our website, you will find our FAQ (Frequently Asked Questions) section. You can also contact us by e-mail to ask any questions you may have.

An electronic version of this user guide is available in English and other languages according to availability on our server:

www.alcatelonetouch.com

Your telephone is a transceiver that operates on GSM in quad-band (850/900/1800/1900MHz), UMTS in quad-band (850/900/1900/2100MHz) and LTE FDD (1/3/7/8/20).



This equipment is in compliance with the essential requirements and other relevant provisions of Directive 1999/5/EC. The entire copy of the Declaration of Conformity for your telephone can be obtained through our website: www.alcatelonetouch.com.

Protection against theft⁽²⁾

Your telephone is identified by an IMEI (phone serial number) shown on the packaging label and in the phone's memory. We recommend that you note the number the first time you use your telephone by entering ***#06#** and keep it in a safe place. It may be requested by the police or your operator if your telephone is stolen. This number allows your mobile telephone to be blocked preventing a third person from using it, even with a different SIM card.

⁽¹⁾ It depends on countries.

⁽²⁾ Contact your network operator to check service availability.

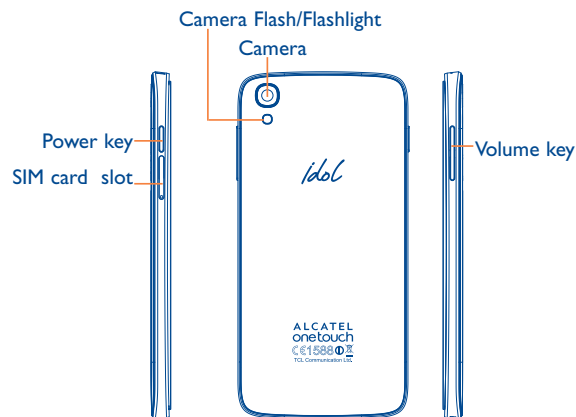
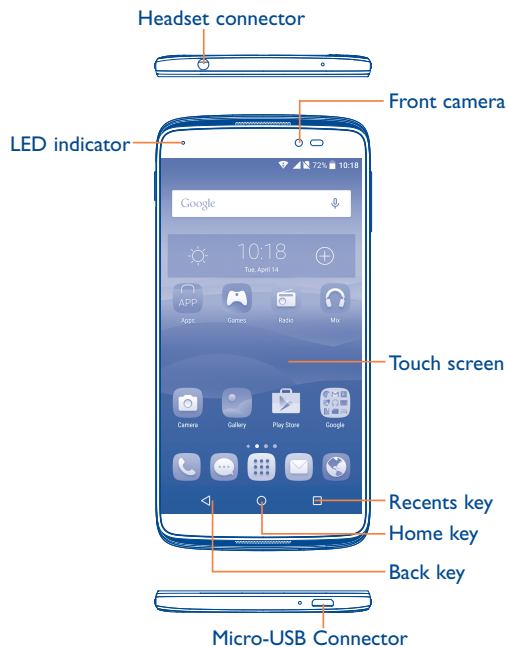
Disclaimer

There may be certain differences between the user manual description and the phone's operation, depending on the software release of your telephone or specific operator services.

TCL Communication Ltd. shall not be held legally responsible for such differences, if any, nor for their potential consequences, which responsibility shall be borne by the operator exclusively. This handset may contain materials, including applications and software in executable or source code form, which is submitted by third parties for inclusion in this handset ("Third Party Materials"). All third party materials in this handset are provided "as is", without warranty of any kind, whether express or implied, including the implied warranties of merchantability, fitness for a particular purpose or use/third party application, interoperability with other materials or applications of the purchaser and non-infringement of copyright. The purchaser undertakes that TCL Communication Ltd. has complied with all quality obligations incumbent upon it as a manufacturer of mobile devices and handsets in complying with Intellectual Property rights. TCL Communication Ltd. will at no stage be responsible for the inability or failure of the Third Party Materials to operate on this handset or in interaction with any other devices of the purchaser. To the maximum extent permitted by law, TCL Communication Ltd. disclaims all liability for any claims, demands, suits or actions, and more specifically – but not limited to – tort law actions, under any theory of liability, arising out of the use, by whatever means, or attempts to use, such Third Party Materials. Moreover, the present Third Party Materials, which are provided free of charge by TCL Communication Ltd., may be subject to paid updates and upgrades in the future; TCL Communication Ltd. waives any responsibility regarding such additional costs, which shall be borne exclusively by the purchaser. The availability of the applications may vary depending on the countries and the operators where the handset is used; in no event shall the list of possible applications and software provided with the handsets be considered as an undertaking from TCL Communication Ltd.; it shall remain merely as information for the purchaser. Therefore, TCL Communication Ltd. shall not be held responsible for the lack of availability of one or more applications wished for by the purchaser, as its availability depends on the country and the operator of the purchaser. TCL Communication Ltd. reserves the right at any time to add or remove Third Party Materials from its handsets without prior notice; in no event shall TCL Communication Ltd. be held responsible by the purchaser for any consequences that such removal may have on the purchaser regarding the use or attempt to use such applications and Third Party Materials.

Your mobile.....

1.1 Keys and connectors



Recents key

- Touch to view recently used applications.



Home key

- From any application or screen, touch to return to the Home screen.
- Long press to pop up Google search icon. Slide your finger to the icon to open Google search.



Back key

- Touch to go back to the previous screen, or to close a dialog box, options menu, the notification panel, etc.

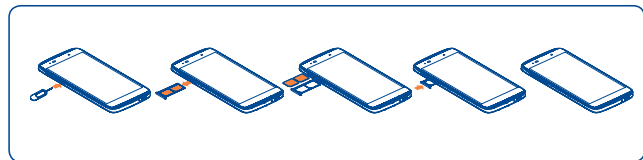
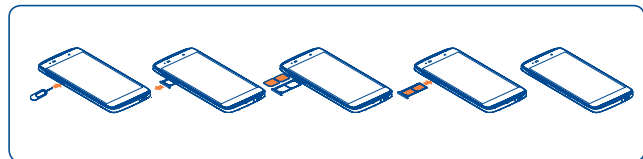
These keys are visible when the screen lights up.

Power key

- Press: Lock the screen/Light up the screen.
- Press and hold: Show the popup menu to select from Power off/Restart/Aeroplane mode.
- Press and hold the **Power** key and **Volume up** key to reset.
- Press and hold the **Power** key and **Volume down** key to capture a screenshot.
- Press and hold the **Power** key for at least 10 seconds to force reboot or hold it longer to power off.

Volume Keys

- In call mode, adjusts the earpiece or headset volume.
- In Music/Video/Streaming mode, adjusts the media volume.
- In general mode, adjusts the ringtone volume.
- Mutes the ringtone of an incoming call.
- In camera preview mode, press **Volume up** or **down** key to enter burst shoot.



Before you install or remove the SIM card, use a pin to press the small cavity until the SIM cassette pops out.



Your phone only supports micro-SIM cards. Do not attempt to insert other SIM types like mini and nano cards; otherwise this may cause damage to your phone.

Note your SIM2 only supports 2G network. SIM1 can support 2G/3G/4G networks.

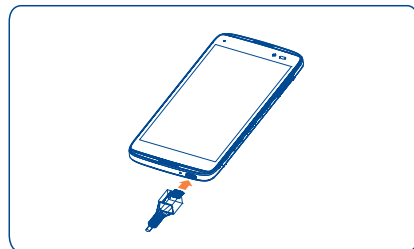
1.2 Getting started

1.2.1 Set up

Inserting or removing the SIM card


You must insert your SIM card to make phone calls. You do not need to power off your phone before inserting or removing the SIM card as this phone can support hot swap.

Charging the battery



Connect the battery charger to your phone and wall socket respectively, the LED indicator will light while charging.

- Make sure the battery is correctly inserted before connecting the charger.
- When using your telephone for the first time, charge the battery fully (approximately 3 hours).

You are advised to fully charge the battery (). Charging status is indicated by a percentage displayed on screen while the phone is powered off. The percentage increases as the phone is charged.



To reduce power consumption and energy waste when the battery is fully charged, disconnect your charger from the plug; switch off Wi-Fi, GPS, Bluetooth or background-running applications when not in use; reduce the backlight time, etc.


1.2.2 Power on your phone

Hold down the **Power** key until the phone powers on, unlock your phone (Slide, PIN, Password, Pattern or Face unlock) if necessary and confirm. The Home screen is displayed.

If you do not know your PIN code or if you have forgotten it, contact your network operator. Do not leave your PIN code with your phone. Store this information in a safe place when not in use.

Set up your phone for the first time

The first time you power on the phone, you should set the following options:

- Select the phone's language, then touch  .
- Select an enable Wi-Fi then touch **NEXT**, otherwise touch **SKIP**.
- Set up network, then touch **NEXT**.

- Set up Google account: If you want to set your Google account, touch **Set up Now** to set. If you have a Google account, touch **Existing**, then enter your Email address and password. If you forgot your password, you can go to <http://www.google.com> to retrieve it. If you don't own a Google account, you are prompted to create one by touching **New**. Touch **NEXT** to continue.
- Set up ONETOUCH Account: refer to Set up Google account.
- Set Owner name, then touch **NEXT**.
- Learn more Google services, then touch **NEXT**.
- Set up Location, then touch **NEXT**.
- The Setup complete screen will display, touch **FINISH** to confirm.

Even if no SIM card is installed, your phone will still power on and you will be able to connect to a Wi-Fi network, (refer to section “**6.1.2 Wi-Fi**”), sign into your Google account and to use some features.

1.2.3 Power off your phone

Hold down the **Power** key from the Home screen until the phone options appear, select **Power off**.

1.3 Home screen

You can bring all the items (applications, shortcuts, folders and widgets) you love or use most frequently to your Home screen for quick access. Touch the **Home** key to switch to the Home screen.



Status bar

- Status/Notification indicators
- Touch and drag down to open the notification panel.

Search bar

- Touch ① to enter text search screen.
- Touch ② to enter voice search screen.

Touch an icon to open an application, folder, etc.


Favourite tray applications

- Touch to enter the application.
- Touch and hold to move or change applications.

Touch to enter application list.

The Home screen is provided in an extended format to allow more space for adding applications, shortcuts etc. Slide the Home screen horizontally left and right to get a complete view.

Reversible the screen

The phone supports reversible function, from the Home screen, touch  to open the applications list, touch **Settings\Display\Reversible**, mark the checkbox to active.

1.3.1 Using the touchscreen

Touch



To access an application, touch it with your finger.

Long press



To enter the available options for an item, long press the item. For example, select a contact in Contacts, long press this contact, an options list will then appear on screen.

Drag



Place your finger on the screen to drag an object to another location.

Slide/Swipe



Slide the screen to scroll up and down the applications, images, and web pages... at your convenience. You can slide the screen horizontally too.

The device also supports one finger zooming in the Messaging, Browser, Email, Camera and Gallery functions. Double touch the screen then slide with one finger to zoom in/out.

Flick



Similar to swiping, but flicking makes it move quicker.

Pinch/Spread



Place the fingers of one hand on the screen surface and draw them apart or together to scale an element on the screen.

Rotate



Automatically change the screen orientation from portrait to landscape by turning the phone sideways to have a better screen view.

1.3.2 Status bar

From the status bar, you can view both phone status (to the right side) and notification information (to the left side).

Status icons

	GPRS connected		No signal
	GPRS in use		Alarm is set
	EDGE connected		Bluetooth is on
	EDGE in use		Connected to a Bluetooth device
	3G connected		Speakerphone is on
	3G in use		Phone microphone is mute
	HSPA (3G+) connected		Roaming
	HSPA (3G+) in use		No SIM card installed
	HSPA+ connected		Vibrate mode
	HSPA+ in use		Battery is very low
	4G connected		Battery is low
	4G in use		Battery is partially drained
	Signal strength		Battery is full
	Wi-Fi is on		Battery is charging
	Connected to a Wi-Fi network		GPS is on
	Airplane mode		

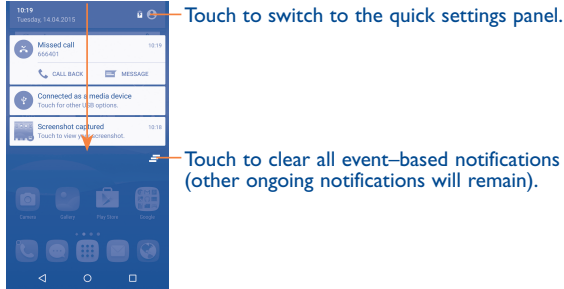
Notification icons

	New Gmail message		Missed call
	New Email message		Call forwarding is on
	New text or multimedia message		Song is playing
	Problem with SMS or MMS delivery		Connected to VPN
	New Google Hangouts message		Radio is on
	New voicemail		Uploading data
	Upcoming event		Download finished
	Screenshot captured		Select input method
	Both USB tethering and portable hotspot are on		An open Wi-Fi network is available
	USB tethering is on		Phone is connected via USB cable
	Portable Wi-Fi hotspot is on		System update available
	Carrier data use threshold approaching or exceeded		More notifications are hidden


Touch and drag down the Status bar to open the Quick settings panel or Notification panel. Touch and drag up to close it. When there are notifications, you can touch them to access notifications directly.

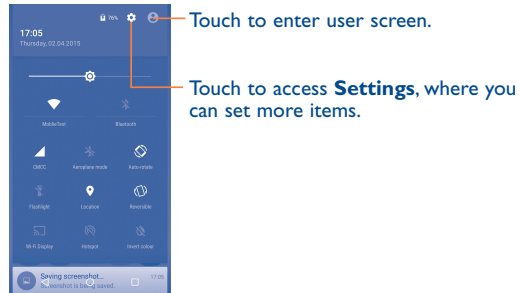
Notification panel

When there are notifications, touch and drag down the Status bar to open the Notification panel to read more detailed information.



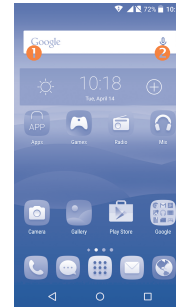
Quick settings panel

Touch and drag down the Notification panel or touch  to open the Quick settings panel. You can enable or disable functions or change modes by touching the icons.




1.3.3 Search bar


The phone provides a Search function which can be used to locate information within applications, the phone or the web.



1 Search by text

- Touch the Search bar from the Home screen.
- Enter the text/phrase you want to search for.
- Touch the  icon on the keyboard if you want to search on the web.

② Search by voice

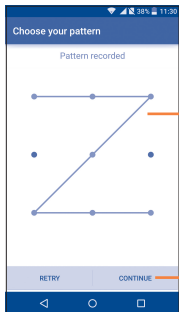
- Touch  from the Search bar to display a dialog screen.
- Speak the word/phrase you want to search for. A list of search results will display for you to select from.

1.3.4 Lock/Unlock your screen

To protect your phone and privacy, you can lock the phone screen by choosing slide or creating a variety of patterns, PIN or password, etc.

To create a screen unlock pattern (refer to section “Screen lock” for detailed settings)


- From the Home screen, touch  to open the applications list, then touch **Settings\Lock screen\Screen lock\Pattern**.
- Draw your own pattern.



Draw your unlock pattern

Touch to confirm by drawing pattern again

To create a screen unlock Face Unlock/PIN/Password

- Touch  to open the applications list, then touch **Settings\Lock screen\Screen lock\Face Unlock, PIN or Password**.
- Set up your Face Unlock, PIN or password.

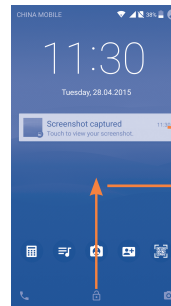
To lock phone screen

Press the **Power** key once to lock the screen.

To unlock the phone screen

Press the **Power** key once to light up the screen, slide to draw the unlock pattern you have created, scan your face, or enter your PIN or password, etc. to unlock the screen.

If you have chosen **Swipe** as the screen lock, you can press the **Power** key to light up the screen, then swipe up to unlock the screen, swipe left to enter Camera or swipe right to enter Call.



Double touch to enter the detail screen

Swipe up to unlock the screen

Swipe left to enter Camera;
and right to enter Call

1.3.5 Personalise your Home screen

Add

You can touch and hold a folder, an application or a widget to activate the Move mode, and drag the item to your preferred Home screen.

Reposition

Long press the item to be repositioned to activate the Move mode, drag the item to the desired position and then release. You can move items both on the Home screen and the Favourite tray. Hold the icon on the left or right edge of the screen to drag the item to another Home screen.

Remove

Long press the item to be removed to activate the Move mode, drag the item up to the top of the **X** icon, and release after the item turns red.

Create folders

To improve the organisation of items (shortcuts or applications) on the Home screen and the Favourite tray, you can add them to a folder by stacking one item on top of another. To rename a folder, open it and touch the folder's title bar to input the new name.

Wallpaper customisation

Long press the empty area in the Home screen, then touch **WALLPAPERS** to customise wallpaper.

1.3.6 Widgets and recently-used applications

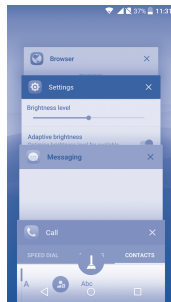
Consult widgets

Long press the empty area in the Home screen, then touch **WIDGETS** to display all widgets at the bottom of the Home screen.

Touch the selected widget and slide it to move to your preferred screen.

Consult recently-used applications

To consult recently-used applications, touch the **Recents** key. Touch a thumbnail in the window to open the related application.



Touch one thumbnail and slide it right/left or touch **X** to delete.

Touch  at the bottom of the screen to delete all thumbnails at once.

1.3.7 Volume adjustment

Using the volume key

Press the **Volume** key to adjust the volume. To active the vibrate mode, press the **Volume down** key until the phone vibrates.

Using Settings menu

From the Home screen, touch  to open the applications list, then touch **Settings**\Sound & notification\Sound to set the volume of media, ringtone, alarm, etc. to your preference.

2 Text input

2.1 Using the Onscreen Keyboard

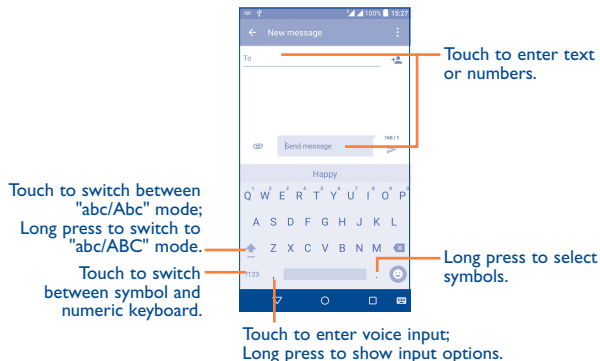
Onscreen Keyboard settings

Touch **Settings\Language & input**, touch the keyboard you want to set up and a series of settings will become available for your selection.

Adjust the Onscreen Keyboard orientation






Turn the phone sideways or upright to adjust the Onscreen Keyboard orientation. You can adjust it by changing the settings (Touch **Settings\Display\When device is rotated\Rotate screen contents**). Also your phone screen is reversible. (Touch **Settings\Display\Reversible**).

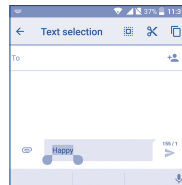
2.1.1 Android keyboard



2.2 Text editing

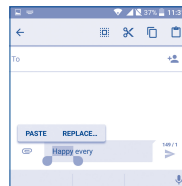
You can edit the text you have entered.

- Long press or double touch within the text you would like to edit.
- Drag the tabs to change the highlighted selection.
- The following options will show: **Select all** , **Cut** , **Copy**  and **Paste** .
- Touch the  icon to go back without any action.



You can also insert new text if preferred

- Touch where you want to type, or long press the blank, the cursor will blink and the tab will show. Drag the tab to move the cursor.
- If you have selected any text, touch the tab to show the **PASTE** icon which allows you to complete pasting immediately.

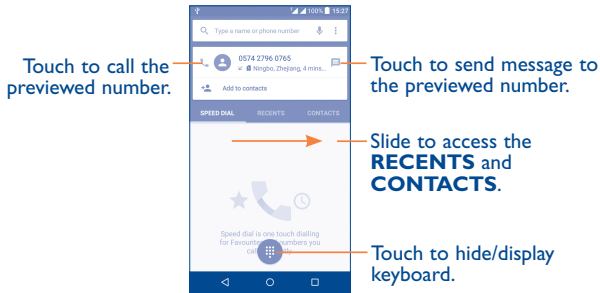


3 Phone call, Call log and People

3.1 Call

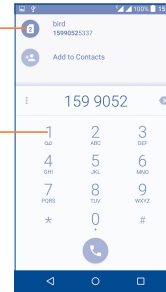
3.1.1 Placing a call


You can easily launch a call by using **Call**. Touch the  icon on the Home screen to access the **Call** application.




Display the suggested number(s).

Touch and hold to access voicemail.





Enter the desired number from the keyboard directly and touch  to place the call or select a contact from **CONTACTS** or **RECENTS** by sliding or touching tabs, then to make the call.

The number you entered can be saved to **Contacts** by touching  and then touching **Create new contact**.


If you make a mistake, you can delete the incorrect digits by touching .

To hang up a call, touch .

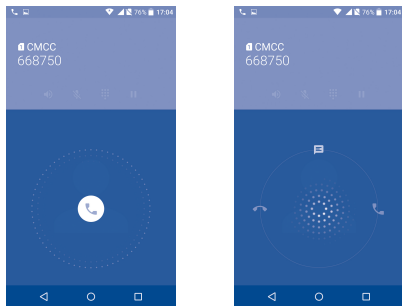
International call

To dial an international call, touch and hold  to enter "+", then enter the international country prefix followed by the full phone number and finally touch .




Emergency call

If your phone has network coverage, dial the emergency number and touch  to make an emergency call. This works even without a SIM card and without typing the PIN code.

3.1.2 Answering or rejecting a call



When you receive a call:

- Slide the  icon to the right to answer;
- Slide the  icon to the left to reject;
- Slide the  icon upwards to reject the call by sending a preset message.

To mute the ringtone volume of an incoming call, press the **Volume up/down** key.




For your convenience, your phone features a unique Reversible UI, which ensures functionality, including normal call, even the phone is held in reverse (upside-down) position.

3.1.3 Calling your voicemail

Your voicemail is provided by your network to avoid missing calls. It works like an answering machine that you can consult at any time.

To access your voicemail, long press .

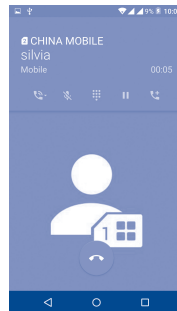
To set your voicemail number:

- From Call screen, touch  and then touch **Settings\Call settings\Dual call settings\Voicemail\Setup\Voicemail number**.

If you receive a voicemail, a voicemail icon  appears on the Status bar. Open the Notification panel and touch **New voicemail**.

3.1.4 During a call

To adjust the volume during a call, press the **Volume up/down** key.



Touch to end the current call.



Touch to activate the speaker during the current call. Touch this icon again to deactivate the speaker.



Touch to mute the current call. Touch this icon again to unmute the call.



Touch to display the Dialpad.



Touch to hold the current call. Touch this icon again to retrieve the call.



Touch to add a call.




To avoid accidental operation of the touchscreen during a call, the screen will be locked automatically when you put the cellphone close to your ear; and it will be unlocked when the cellphone is taken away from your ear.

3.1.5 Managing multiple calls





With this phone you can handle multiple calls at the same time.

Swap calls

When you accept two calls, touch the  icon, you can now switch between two lines. The current call will be put on hold and you are able to join the other call.

Conference calls⁽¹⁾

You can set up a conference call as follows.

- Place a call to the first participant of the conference call.
- Touch the icon .
- Then touch the icon  and then touch the icon  to start the conference.
- Touch  to end the conference call and disconnect all callers.

3.1.6 Call settings

Touch  from the Call screen, then touch **Settings**. The following options are available:

General settings

- **Contact display options:** Touch to sort the list by the first name or last name, as well as viewing contact names by first/last name first.
- **Sounds and vibrate:** Touch to set incoming call ringtone, mark the checkbox to enable dial pad tones or vibrate for calls.

- **Other/Quick Responses:** Touch to edit quick responses which will be used when you reject a call with messages.

Call settings

- **Dual call settings:** select SIM 1 or SIM 2 to set under options.

Voicemail

- **Service:** Opens a dialog box where you can select your carrier's voicemail service or another service.
- **Setup:** If you are using your carrier's voicemail service, this opens a dialog box where you can enter the phone number to use for listening to and managing your voicemail. You can enter a comma (,) to insert a pause into the number — for example, to add a password after the phone number.
- **Sound:** Touch to set the sound when a new voicemail arrives.
- **Vibrate:** Mark the checkbox to enable vibration when a new voicemail arrives.

Call barring: Touch to configure Call barring settings. Mark the checkbox to activate the call barring for outgoing and incoming calls.

Fixed Dialling Numbers: Fixed dialling number (FDN) is a SIM service mode, where outgoing calls are restricted to a set of phone numbers. These numbers are added to the FDN list. The most common practical application of FDN is for parents to restrict the phone numbers to which their children can dial. For security reasons, you'll be prompted to enable FDN by entering SIM PIN2 which is usually acquired from your service provider or SIM maker.

Service Dialling Numbers: You can place a call from the SDN list.

Call forwarding: Touch to configure how your calls are forwarded when you are busy, unanswered or unreachable.

Additional settings

- **Caller ID:** Touch to use default operator settings to display your number in outgoing calls.

⁽¹⁾ Depending on your network operator.


- **Call waiting:** Mark the check box to notify you of new incoming calls during a call.

- **TTY mode:** TTY mode can be used by people who are deaf, have poor hearing or speech impairments.
- **Hearing aids:** Hearing aid mode can be used by people who are deaf, have poor hearing or speech impairments. After connecting the phone and hearing aid device, calls are linked to a relay service, which converts incoming speech to text for the person using the hearing aid and converts outgoing text from the hearing aid device to a spoken voice for the person on the other end of the conversation.
- **DTMF Tones:** Dual Tone Multi-Frequency, or DTMF is a method for instructing a telephone switching system of the telephone number to be dialled, or to issue commands to switching systems or related telephony equipment. Touch to enable DTMF tones.

3.2 Call log

You can access your call memory by touching **RECENTS** tab from the Call screen to view Missed calls, Outgoing calls and Incoming calls.

Touch a contact or number to view information or further operations, you can launch a new call, send SMS to the contact or number, view detailed information of the call, or clear the call.

Touch **View full call history** to view All call log, touch  and **Clear call log** to clear the entire call memory.

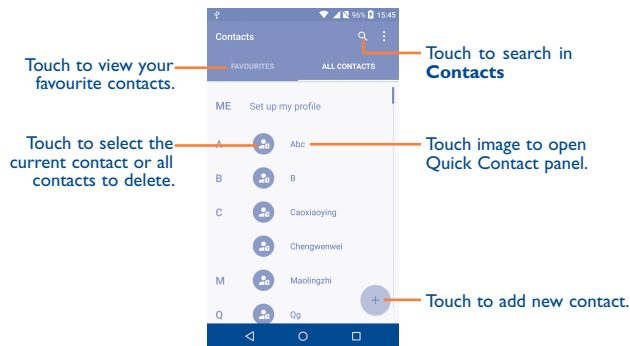
3.3 Contacts.....

Contacts enables quick and easy access to the contact you want to reach.





You can view and create contacts on your phone and synchronise these with your Gmail contacts or other applications on the web or on your phone.


3.3.1 Consult your Contacts


To access this feature, touch  from the Home screen, then select **Contacts**.



Delete a contact

To delete a contact, touch the contact you want to delete, the icon will turn to , then touch  and confirm to delete. Touch  to select all contacts, then touch  and confirm to delete all contacts.

 The contact you have deleted will also be removed from other applications on the phone or web the next time you synchronise your phone.

Touch  to display the contacts list option menu, following actions are enabled:

- **Contacts to display** Choose contacts to display.
- **Import/export** Import or export contacts between phone and SIM card; or to share contacts.
- **Accounts** Manage the synchronisation settings for different accounts.
- **Settings** Touch to change the display of the sort list and contact names.

3.3.2 Adding a contact

Touch  in the contact list to create a new contact.

You are required to enter the contact's name and other contact information. By scrolling up and down the screen, you can move from one field to another easily.




If you want to add more information, touch **Add another field** at the bottom to add a new category.

When finished, touch  to save.

To exit without saving, you can touch  and then touch **Discard changes**.

Add to/remove from Favourites⁽¹⁾

To add a contact to favourites, you can touch a contact to view details then touch  to add the contact to favourites (the star will turn white colour).

To remove a contact from favourites, touch the white star  on the contact details screen.


3.3.3 Editing your contacts

To edit contact information, touch  in the contact details screen to edit.

When finished, touch  to save.

Change a contact's default phone number

The default phone number (the number which has priority when making a call or sending a message) will always be displayed under the contact name.

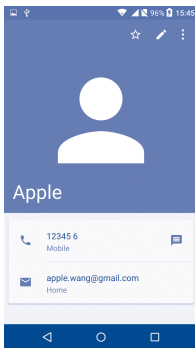
To change the default phone number, long press the number you want to set as the default number from the contact's details screen, then select **Set default**. A  appears before the number.

This choice is only available when the contact has more than one number.

3.3.4 Use Quick contact for Android

Touch a contact to open Quick Contact for Android, then you can touch  or the number to make a call, touch  to send a message.

⁽¹⁾ Only phone contacts can be added to Favourites.



The icons available on the Quick Contact panel depend on the information you have for the contact and the applications and accounts on your phone.

3.3.5 Importing, exporting and sharing contacts

This phone enables you to import or export contacts between your phone, SIM card and phone storage.

From the Contacts screen, touch to open the options menu, touch **Import/export**, then select **Import from SIM card**, **Export to SIM card**, **Import from phone storage**, **Export to phone storage** or **Share visible contacts**.

To import/export a single contact from/to your SIM card, select the contact you want to import/export, and touch the / icon to confirm.

To import/export all contacts from/to your SIM card, touch the icon and then the / icon to confirm.

You can share a single contact or contacts with others by sending the contact's vCard to them via Bluetooth, Gmail, etc.

Touch a contact you want to share, touch the icon and **Share** from the contact details screen, and then select the application to perform this action.

3.3.6 Displaying contacts

You can configure which list of contacts, for each account, you want to display in the Contacts list. Touch and touch **Contacts to display** from contacts list screen, then you can choose which contacts to display.

Touch and **Settings** to sort the list by the given name or family name, as well as viewing contact names by given/family name first.

3.3.7 Joining/Separating contacts⁽¹⁾

To avoid duplication, you can add any new contact information to existing contacts in a single action.

Touch the contact which you want to add information to, touch to enter edit contact screen, then touch again and touch **Join**.



At this time, you are required to select the contact whose information you want to join with the first contact. The information from the second contact is added to the first one, and the second contact will no longer be displayed in the Contacts list.

To separate contact information, touch the contact whose information you want to separate, touch to enter edit contact screen, then touch again and touch **Separate**, touch **OK** to confirm.

⁽¹⁾ Only applicable for phone contacts.


3.3.8 Accounts

Contacts, data or other information can be synchronised from multiple accounts, depending on the applications installed on your phone.

To add an account, touch  from the contacts list and touch **Add account**, or from the home screen, touch  then **Settings\Accounts\Add account**.

You are required to select the kind of account you are adding, like Google, Corporate, etc.


As with other account set-ups, you need to enter detailed information, like username, password, etc.

You can remove an account to delete it and all associated information from the phone. Touch the account you want to delete, touch  and select **Remove account**, then confirm.

Turn on/off the sync & Auto-sync

Touch an account to enter the account screen, mark/unmark the checkbox(s) to turn on/off the account's auto-sync. When activated, all changes to information on the phone or online will be automatically synchronised with each other.

Sync manually



You can also synchronise an account manually from the **Accounts** screen. Touch an account in the list, then touch  and select **Sync now**.

4 Messaging, Gmail/Email, Google Hangouts.....

4.1 Messaging.....

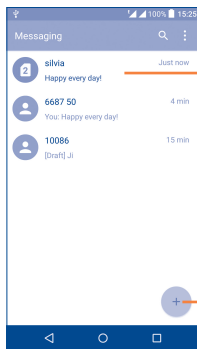
You can create, edit and receive SMS and MMS with this phone.

To access this feature, touch  from the Home screen then select **Messaging**.

 To check messages stored in your SIM card, touch the  icon from the Messaging screen, then touch **Settings\Manage SIM messages**.

4.1.1 Write message

On the message list screen, touch the new message icon  to write text/multimedia messages.






- Touch to view the whole message thread.
- Long press to activate delete mode.

• Touch to create a new message.



For saved contacts, touch the photo to open the Quick Contact panel to communicate with the contact. For unsaved contacts, touch the photo to add the number to your **Contacts**.

Sending a text message

Enter the mobile phone number of the recipient in the **To** bar or touch  to add recipients and touch the **Send message** bar to enter the text of the message. Touch the  icon to insert emoticons. When finished, touch  to send the text message.

An SMS message of more than 160 characters will be charged as several SMS. A counter will be on the right of the text box to remind you how many characters are allowed to be entered in one message.





Specific letters (accented) will also increase the size of the SMS, this may cause multiple SMS to be sent to your recipient.

Sending a multimedia message


MMS enables you to send video clips, images, photos, animations, slides and sounds to other compatible mobiles and e-mail addresses.

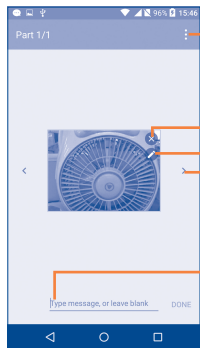
An SMS will be converted to MMS automatically when media files (image, video, audio, slides, etc.) are attached or subject or email addresses are added.

To send a multimedia message, enter the recipient's phone number in the **To** bar and touch the **Send message** bar to enter the text of the message. Touch  to open the options menu, touch **Add subject** to insert a subject. Touch the  icon to attach a picture, video, audio and so on.

When finished, touch  to send the multimedia message.

Attach options:

- **Take photo** Access the Camera to capture a new picture for attaching.
- **Capture video** Access the Camcorder to record a new video for attaching.
- **Record audio** Enter the voice message recorder to record a voice message for attaching.
- **Contact card** Enter Contacts to select a contact as an attachment.
- **Pictures** Access the Gallery application or File manager to select a picture as an attachment.
- **Videos** Access the Gallery application or File manager to select a video as an attachment.
- **Audio** Access to select an audio file as an attachment.
- **Calendar** Access the Calendar application to select one or more event(s) to attach.
- **Slide show** Enter the Edit slideshow screen, touch **Add slide** to create a new slide, and touch a currently existing slide to delete or edit it (see following picture). Touch  to get more actions, like setting the slide duration, adding music, etc.



Touch to view more options.


Touch to delete current attachment.

Touch to edit current slide.

Touch to view other slides.










Touch to create a new message.

4.1.2 Manage messages


When receiving a message, an  icon will appear on the status bar as a notification. Drag down the status bar to open the Notification panel, touch the new message to open and read it. You can also access the Messaging application and touch the message to open it.

Messages are displayed in conversational order.

Touch a message to enter the message composing screen:

- Touch  to call the number;
- Touch  to save the number to contacts or view the contact detail if the number has been saved;
- To reply to a message, enter the text, or touch  to insert quick text, contact etc., after edit then touch .
- Touch and hold a message to show the following icons: copy text , forward , view detail , delete  etc., touch  to save the message to SIM card.

4.1.3 Adjust message settings

You can adjust a range of message settings. From the Messaging application screen, touch  and touch **Settings**.

- **SMS enable** Touch to change your default SMS app.

Storage

- **Delete old messages** Select to delete old messages when the maximum number of stored messages is reached.
- **Text message limit** Touch to set the number of text messages to be saved per conversation.
- **Multimedia message limit** Touch to set the number of multimedia messages to be saved per conversation.

Text message (SMS) settings

- **Delivery reports** Select to request a delivery report for each text message you send.
- **Quick text** Touch to add or edit message templates.
- **Manage SIM messages** Touch to manage text messages stored on your SIM card.
- **SMS Service Centre** Touch to edit or view the service centre number.
- **Validity period** Touch to select the validity period, during which the network provider will continue to try to send the message.
- **Alphabet management** Touch to select the Alphabet mode.

Multimedia message (MMS) settings

- **Delivery reports** Select to request a delivery report for each multimedia message you send.
- **Read reports** Select to request a report on whether each recipient has read a multimedia message sent by you.
- **Auto-retrieve** Select to download the full MMS message (including message body and attachment) automatically to your phone. Otherwise, download only the MMS message header.
- **Roaming auto-retrieve** Select to download the full MMS message (including message body and attachment) automatically when roaming. Otherwise, download only the MMS message header to avoid extra charges.
- **Creation mode** Select to change creation mode.
- **Maximum message size** Select to input the maximum message size.
- **Priority** Touch to set the priority.

Notifications

- **Notifications** Select to display message notifications in the status bar.
- **Select ringtone** Touch to select a ringtone as a new message notification tone.
- **Vibrate** Select to have phone vibrate as a notification when receiving a new message.

WAP messages setting

- **WAP message enable** Touch to enable receipt of push messages from network.

Cell Broadcast settings

- **Cell broadcast** Mark the checkbox to enable receipt of cell broadcast messages.
- **Select CB ringtone** Touch to select CB ringtone when receiving cell broadcast messages.
- **Enable CB LED indicator** Mark the checkbox to enable CB LED indicator.
- **Enable light up screen** Mark the checkbox to light up the screen when receiving new cell broadcast.
- **Vibrate** Select to have phone vibrate as a notification when receiving a new message.
- **Cell broadcast settings** Touch to select channels and configure languages.
- **Emergency alerts** Touch to enter emergency alert settings, including whether to show threats and alert tones.

4.2 Gmail/Email

The first time you set up your phone, you can select to use an existing Gmail or to create a new Email account.








4.2.1 Gmail

As Google's web-based email service, Gmail is configured when you first set up your phone. Gmail on your phone can be automatically synchronised with your Gmail account on the web.

To access Gmail


From the Home screen, touch  to enter the applications list, then touch **Gmail**.

To create and send emails

- Touch the icon  from the Inbox screen.
- Enter recipient(s)'s email address in **To** field, and if necessary, touch  and touch **Cc/Bcc** to add a copy or a blind copy to the message.
- Enter the subject and the content of the message.
- Touch  to add an attachment.
- Finally, touch the  icon to send.
- If you do not want to send the mail out right away, you can touch  and **Save draft** or touch the **Back** key to save a copy. To view the draft, touch the icon , then select **Drafts**.
- If you do not want to send or save the mail, you can touch  and then touch **Discard**.



To add a signature to emails, touch  and **Settings** from inbox screen, choose an account, then touch **Signature**.

To receive and read your emails




When a new email arrives, you will be notified by a ringtone or vibration, and an  icon will appear on the Status bar.

Touch and drag down the Status bar to display the Notification panel and touch the new email to view it. You can also access the Gmail Inbox label and touch the new mail to read it.

You can search for an email by sender, subject, label, etc.


- Touch the  icon from Inbox screen.
- Enter the keyword you want to search for in the search box and touch .


To reply or forward emails

- **Reply** When viewing an email, touch  to reply to the sender of this mail.
- **Reply all** Touch  and select **"Reply all"** to send the message to all people in a mail loop.
- **Forward** Touch  and select **"Forward"** to forward the received mail to other people.
- **Add star** Touch to add a star for the mail.
- **Print** Touch to print the mail.




Managing Gmails by Labels

To conveniently manage conversations and messages, you can organise them using a Label.

To label a conversation when reading a conversation's messages, touch  and then choose **Move to**.

To view conversations by labels when viewing your inbox or another conversation list, touch the icon , then touch a label to view a list of conversations with that label.

Touch and hold an email to activate batch mode and produce the following options:

-  Touch to archive the email message. To display the archived messages, you can touch in Inbox screen then touch **All mail**.
-  Touch to delete the email message.
-  Touch to mark an email message as read or unread.

Touch  to access the following options.

- **Move to** Touch to move the mail to other labels.
- **Change labels** Touch to change the label of the email message or conversation.
- **Add/Remove star** To assign a star or remove the star from the conversation.
- **Mark (not) important** To Mark the email as important or not important.
- **Mute** Touch to hide the mail and the mail could be found by touching **All mail**.
- **Report spam** To report the email message/conversation as spam.
- **Report phishing** To report the email message/conversations phishing.

Gmail settings

To access Gmail settings, touch the icon  and select **Settings**.

General settings

- **Gmail default action** Touch to set the default action: archive or delete.
- **Swipe actions** Mark the checkbox to enable a Swipe to archive messages within the conversation list.
- **Sender image** Mark the checkbox to show the sender's image beside their name in the conversation list.
- **Reply all** Mark the checkbox to define the default response to messages.
- **Auto-fit messages** Mark the checkbox to shrink messages to fit the screen and allow zooming.

- **Auto-advance** Touch to select which screen (**Newer, Older or Conversation list**) to show after you delete or archive a conversation.
- **Confirm before deleting** Mark the checkbox to receive a request to confirm your action before deleting emails.
- **Confirm before archiving** Mark the checkbox to receive a request to confirm your action before archiving emails.
- **Confirm before sending** Mark the checkbox to receive a request to confirm your action before sending emails.

Touch an account to view the following settings:

- **Inbox type** To set this inbox as the default or priority Inbox.
- **Inbox categories** Mark the checkbox to enable the folder to appear under the Inbox folder.
- **Notifications** Mark the checkbox to activate a notification when a new email arrives.
- **Inbox sound & vibrate** Touch to set Sync message, Ringtone, Vibrate and Notify once.
- **Signature** To add a signature text to the end of each mail you send.
- **Vacation responder** Touch to set a notification when on vacation.
- **Sync Gmail** Mark the checkbox to turn on/off Gmail sync.
- **Days of mail to sync** Touch to set the duration of days for mail sync.
- **Management labels** Touch to open the Label screen, where you can manage synchronisation and notifications.
- **Download attachments** Mark the checkbox to auto download attachments to recent messages via Wi-Fi.
- **Images** Touch to set whether images are always shown or if you will be prompted to show them.


4.2.2 Email







Besides your Gmail account, you can also set up external POP3 or IMAP email accounts in your phone.

To access this feature, touch  from the Home screen, then select **Email**.

An email wizard will guide you through the steps to set up an email account.

- Enter the email address and password of the account you want to set up.
- Touch **Next**. If the account you entered is not provided by your service provider in the phone, you will be prompted to go to the email account settings screen to enter settings manually. Alternatively, you can touch **Manual setup** to directly enter the incoming and outgoing settings for the email account you are setting up.
- Enter the account name and display name in outgoing emails.
- To add another email account, you can touch the icon  on the upper left corner and select **Settings**. And then touch **Add account**.

To create and send emails

- Touch the icon  from the Inbox screen.
- Enter recipient(s) email address(es) in the **To** field.
- If necessary, touch **Cc/Bcc** to add a copy or a blind carbon copy to the message.
- Enter the subject and the content of the message.
- Touch  to add an attachment.
- If you do not want to send the mail right away, you can touch  and **Save draft** or touch the **Back** key to save a copy.
- Finally, touch  to send.

4.3 Google Hangouts



Google's instant messaging service, Google Hangouts, lets you communicate with your friends whenever they are connected to this service.

To access this feature and sign in, touch  from the Home screen, then touch **Hangouts**.

5 Calendar & Alarm clock & Calculator.....

5.1 Calendar 2⁽¹⁾

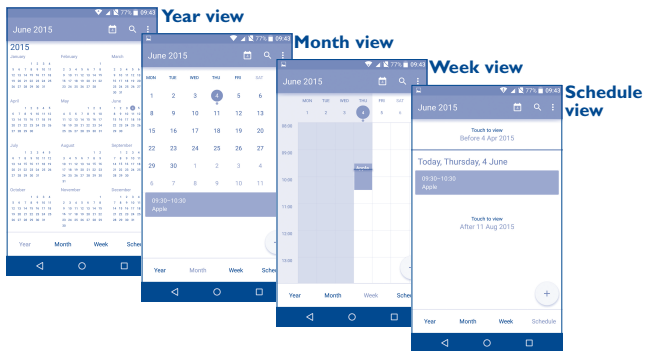
Use the Calendar to keep track of important meetings, appointments, etc.

To access this function, touch  from the Home screen, then touch **Calendar**.

5.1.1 Multimode view

You can display the Calendar in Yearly, Monthly, Weekly and Schedule view. Touch the button at the bottom to change your Calendar view.



Touch  to return to Today's view.





⁽¹⁾ The icon will vary with date.

5.1.2 To create new events

You can add new events from any Calendar view.



- Touch  to access a new event edit screen.
- Fill in all required information for this new event. If it is a whole-day event, you can select **ALL DAY**.
- Invite guests to the event. Enter the email addresses of the guests you want to invite with commas to separate. The guests will receive an invitation from Calendar and Email.
- When finished, touch  from the top of the screen.

To quickly create an event from the Week view screens, touch an empty spot to select a target area which will then turn , and touch again to create the new event.


Important options are available by touching  from the Calendar main screen:

- **Refresh** To refresh the calendar.
- **Go to** Touch to enter the defined day.
- **Calendars to display** To show or hide, remove or add calendars.
- **Settings** To set a series of Calendar settings.

5.1.3 To delete or edit an event

To delete or edit an event, touch the event to enter its details screen, touch the  icon to edit the event, and touch the  icon to delete.

5.1.4 Event reminder

If a reminder is set for an event, the upcoming event icon  will appear on the Status bar as a notification when the reminder time arrives.

Touch and drag down the status bar to open the notification panel, touch an event name to view the Calendar notification list.

Touch the **Back** key to keep the reminders pending in the status bar and the notification panel.

5.2 Time

Your mobile phone has a built-in clock.

To access this function, touch  from the Home screen, then touch **Time**.

5.2.1 World clock

To access this function, touch  on the Time screen.

According to the delivery location, the system will set a default clock.

- Touch the  icon to add a time zone.

5.2.2 Alarm

To set an alarm

From the Time screen, touch  to enter the **Alarm** screen, touch  to add a new alarm. The following options will appear:


- **Label** Touch to set a name for the alarm.
- **Repeat** Touch to select the days when you want the alarm to work.
- **Vibrate** Select to activate vibration.
- **Ringtone** Touch to select a ringtone for the alarm.
- **Time** Touch to set the alarm time.

When finished, touch **OK** to confirm.

Touch a currently existing alarm to enter the alarm editing screen.

Touch  to delete the selected alarm.


To adjust alarm settings

Touch the  icon from the Alarm screen, the following options can now be adjusted:

- **Style** Touch to set the clock style to Analogy or Digital.
- **Automatic home clock** Mark the checkbox to enable the function when travelling in an area where the time is different, add a clock for home.
- **Home time zone** Touch to set Home time zone.
- **Silence after** Touch to set a temporary turn off time for an alarm.
- **Snooze length** Touch to set the duration of alarms.
- **Alarm volume** Touch to set alarm volume.
- **Volume buttons** Touch to set side **Volume up/down** key behaviours when alarm sounds: **None**, **Snooze** or **Dismiss**.

5.2.3 Countdown

From the Time screen, touch  to enter the **Countdown** screen.

Touch the  icon to set the countdown time in panel. The time should be typed in hour, minute and second number sequence.

Touch  icon to activate Countdown.

Touch  icon to deactivate Countdown.



Touch  icon to delete current countdown label.

5.2.4 Timer

From the Time screen, touch  to enter the **Timer** screen.

Touch  to activate the timer.

Touch  to show a list of records according to the updated time.

Touch  to halt the total and lap times. These will only restart after  is touched.

Touch  to delete the record.

5.3 Calculator

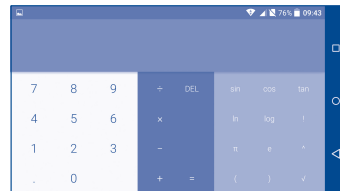
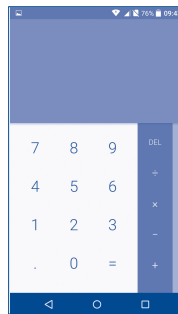


With the Calculator, you can solve many mathematical problems.

To access this function, touch  from the Home screen, then touch **Calculator**.

There are two panels available: Basic panel and Advanced panel.

To switch between panels, turn the device to the landscape mode from the basic panel to open the Advanced panel⁽¹⁾.



Enter a number and the arithmetic operation to be performed, enter the second number, then touch “=” to display the result. Touch **DEL** to delete digits one by one, touch and hold **DEL** to delete all at one time.

⁽¹⁾ If **Settings\Display\When device is rotated\Rotate screen contents** is enabled, this item will display.

6 Getting connected.....

To connect to the internet with this phone, you can use GPRS/EDGE/3G/4G networks or Wi-Fi, whichever is most convenient.

6.1 Connecting to the Internet



6.1.1 GPRS/EDGE/3G/4G

The first time you turn on your phone with your SIM card inserted, it will automatically configure your network service: GPRS, EDGE, 3G or 4G.

To check the network connection you are using, touch **Settings\More...\Mobile networks\Access Point Names** or **Network operators**.

To create a new access point

A new GPRS/EDGE/3G/4G network connection can be added to your phone with the following steps:

- Touch **Settings\More...\Mobile networks\Access Point Names**.
- Then touch the  icon to enter the required APN information.
- When finished, touch the  key and touch **Save**.

To activate/deactivate Data roaming

When roaming, you can decide to connect/disconnect to a data service.

- Touch **Settings\More...\Mobile networks**.
- Select **Data roaming** to set roaming mode.
- When Data roaming is disabled, you can still perform data exchange with a Wi-Fi connection (refer to “6.1.2 Wi-Fi”).


To set preferred network mode

- Touch **Settings\More...\Mobile networks\Preferred network mode**.

6.1.2 Wi-Fi

Using Wi-Fi, you can connect to the Internet when your phone is within range of a wireless network. Wi-Fi can be used on your phone even without a SIM card inserted.

To turn Wi-Fi on and connect to a wireless network

- Touch **Settings**.
- Touch the switch  beside Wi-Fi to turn on/off Wi-Fi.
- Touch **Wi-Fi**, the detailed information of detected Wi-Fi networks is displayed in the Wi-Fi networks section.
- Touch a Wi-Fi network to connect to it. If the network you selected is secured, you are required to enter a password or other credentials (you may contact the network operator for details). When finished, touch **Connect**.


To activate notification when a new network is detected

When Wi-Fi is on and the network notification is activated, the Wi-Fi icon will appear on the status bar whenever the phone detects an available wireless network within range. The following steps activate the notification function when Wi-Fi is on:

- Touch **Settings**.
- Touch **Wi-Fi**, then touch the  key and **Advanced** from the Wi-Fi screen.
- Mark/Unmark the **Network notification** checkbox to activate/deactivate this function.

To add a Wi-Fi network

When Wi-Fi is on, you may add new Wi-Fi networks according to your preference.

- Touch **Settings**.
- Touch **Wi-Fi**, then touch the  key and **Add network** from the Wi-Fi screen.
- Enter the name of the network and any required network information.
- Touch **CONNECT**.

When successfully connected, your phone will be connected automatically the next time you are within range of this network.

To forget a Wi-Fi network

The following steps prevent automatic connections to networks which you no longer wish to use.

- Turn on Wi-Fi, if it's not already on.
- In the Wi-Fi screen, long press the name of the saved network.
- Touch **Forget** in the dialog that opens.

 Warning: 5 GHz Wi-Fi operation is for indoor use only.

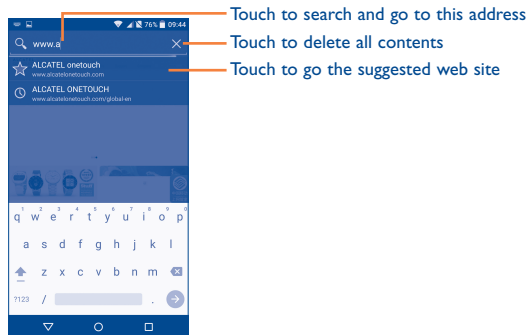
6.2 Browser.....

Using the Browser, you can enjoy surfing the Web.

To access this function, touch  from the Home screen, then touch **Browser**.


To go to a web page

On the Browser screen, touch the URL bar at the top, enter the address of the web page, then confirm.



The URL bar will hide after a few seconds. To show the URL bar, you can touch and slide down the screen.

To set a homepage

- Touch the  icon from Browser screen to display option menu, touch **Settings\General\Set homepage**.
- Choose a page or most visited website as your homepage.
- If you choose **Other**, enter the URL of the website you want to set as your homepage, touch **OK** to confirm.

Viewing web pages



When opening a website, you can navigate on web pages by sliding your finger on the screen in any direction to locate the information you want to view.

To zoom in/out of a web page

Pinch/Spread your finger on the screen to zoom out/in of the web page.



To quickly zoom into a section of a web page, double touch on the section you want to view. To return to the normal zoom level, double touch again.

To find text on a web page

- Touch the  icon from Browser screen to display option menu, touch **Settings\Find on page**.
- Enter the text or phrase you want to find.
- The first word with matching characters will be highlighted on the screen, and subsequent matches will be boxed.
- Touch the up or down arrow to switch to the previous or next matching items.
- When finished, you can touch  or the **Back** key to close the search bar.





Further operations for the text on a web page

You can copy, share or search the text from a web page:

- Touch and hold the text to highlight the text.
- Move two tabs to select the text.
- Touch **SELECT ALL** to select all words in this web screen.
- Touch the  icon to show further actions, including share and search on the page or the web.
- When finished, touch  or the **Back** key to deactivate the mode.

To open new window/switch between windows

Multiple windows can be opened at the same time for your convenience.

- Touch  to open all windows' thumbnails.
- Slide up and down to view all windows, touch one to view it.
- Touch  to open a new window.
- Touch  icon and **New incognito tab** to open a window without any trace.
- To close a window, touch  on the window you want to close or slide it sideways.

Other options:

- **Refresh** To refresh the current page.
- **Forward** To forward the pages you have opened.
- **Bookmarks** To see the bookmarks and browsing history.
- **Save to bookmarks** To add the current website page as a bookmark.
- **Share page** To share the current page with your friends in various ways, e.g. via Message, Email, Bluetooth, etc.
- **Find on page** To input contents you want to find on the current page.
- **Request desktop site** To enable/disable computer version websites.
- **Save for offline reading** To save the web page for offline reading. You can find it by touching the **Menu** key, then **Bookmarks\Saved pages**.
- **Exit** To close all tabs and exit.




By touching the icon on the left of the URL, you can view more information about the current page.

6.2.1 Manage links, history, downloads

To manage a link, phone number or address displayed on a web page

- **Link** Touch the link to open the web page.
Long press the link to open options for further operation, like open in new window, save link, share link, copy link, etc.
- **Phone number** Touch to call the phone number.
- **Address** Touch to open Google Maps and locate the address.


To view Browser history


- Touch the  icon from Browser screen, touch **Settings\Bookmarks**.
- Touch the **HISTORY** tab to view browser history.
- Touch **Most visited** to view your most frequently visited pages.

To download a web application/view your downloads

Before downloading a web application, you need to enable your phone to install web applications (Touch **Settings\Security**, enable the **Unknown sources**, finally touch **OK** to confirm).


To download an item, touch the item or the link you want to download.

To cancel a download, touch the downloaded item from the Notification panel, select the item to be cancelled, and touch  to confirm.




To view items you have downloaded, touch , then touch the application **Downloads**.

Manage bookmarks




To bookmark a web page

- Open the web page you want to bookmark.
- Touch the  icon and **Save to bookmarks**, or from the **HISTORY** screen, touch the star beside the URL.
- Enter the name and the location if needed and touch **OK** to confirm.

To open a bookmark

- Touch the  icon and **Bookmarks**, or touch the  icon and touch  to enter the **BOOKMARKS** screen.
- Touch the bookmark you want to open.
- You can also long press to display the options screen, then touch **Open** or **Open in new tab**.

To edit a bookmark

- Touch the  icon and **Bookmarks**, or touch the  icon and touch  to enter the **BOOKMARKS** screen.
- Long press the bookmark you want to edit.
- Touch **Edit bookmark**, and enter your changes.
- When finished, touch **OK** to confirm.

Long press a bookmark in the bookmark list to view these additional options:

- **Add shortcut to home** To add a bookmark shortcut to the Home screen.
- **Share link** To share the bookmark.
- **Copy link URL** To copy the bookmark link.
- **Delete bookmark** To delete a bookmark.
- **Set as homepage** To set this page as the homepage.

6.2.2 Settings

A series of settings are available for your adjustment. To access Browser settings, touch the **Menu** key from the Browser screen, and touch **Settings**.

General

- **Set homepage** Touch to set homepage.
- **Form auto-fill** Mark the checkbox to fill out web forms with a single touch.
- **Auto-fill text** Touch to set up text to auto-fill in web forms.

Privacy & security

- **Clear cache** Touch to clear locally cached content and databases.
- **Clear history** Touch to clear the browser history.
- **Show security warnings** Mark to show a warning if there is a problem with a site's security.
- **Do Not Track** Mark to send a Do Not Track request with your browsing traffic.
- **Accept cookies** Mark to allow sites to save and read cookie data.
- **Clear all cookie data** Touch to clear all browser cookies.
- **Remember form data** Mark the checkbox to remember data in forms for later use.
- **Clear form data** Touch to clear all the saved form data.
- **Enable location** Mark to allow sites to request access to your location.
- **Clear location access** Touch to clear location access for all websites.

- **Remember passwords** Mark to save usernames and passwords for websites.
- **Clear passwords** Touch to clear all saved passwords.

Accessibility

- **Force enable zoom** Mark to control the zoom level for a website according to your preference.
- **Text scaling** Slide to change the size of the text display.

Advanced

- **Set search engine** Touch to select a search engine.
- **Open in background** Mark to open new windows behind the current one.
- **Enable JavaScript** Mark to enable JavaScript.
- **Enable Memory Monitor** Mark to enable Memory Monitor.
- **Allow multiple tabs per app** Mark the checkbox to enable one application to use more than one tab.
- **Website settings** Touch to view advanced settings for individual websites.
- **Default zoom** Touch to select the default magnification level.
- **Open pages in overview** Mark the checkbox to show an overview of newly-opened pages.
- **Auto-fit pages** Mark to format web pages to fit the screen.
- **Block pop-ups** Mark the checkbox to prevent pop-up windows.
- **Text encoding** Touch to select the character-encoding standard.
- **Reset to default** Touch to clear all browser data and to reset all settings to default.
- **Custom download path** Touch to set the default storage location for the download file.

Bandwidth management

- **Search result preloading** Touch to enable/disable the browser's ability to preload search results in the background.
- **Web page preloading** Touch to enable/disable the browser's ability to preload web page in the background.
- **Load images** Mark to display images on web pages.

Labs

- **Fullscreen** Mark to use the fullscreen mode.

6.3 Connecting to Bluetooth devices⁽¹⁾


Bluetooth is a short-range wireless communication technology that you can use to exchange data, or connect to other Bluetooth devices for various uses.

To access this function, touch **Settings\Bluetooth**, your device and other available ones will show on the screen.

To turn on Bluetooth

- Touch **Settings**.
- Touch  to activate/deactivate this function.


To make your phone more recognisable, you can change your phone's name which is visible to others.

- Touch **Settings\Bluetooth**.
- Touch the  icon and **Rename this device**.
- Enter a name, and touch **Rename** to confirm.


⁽¹⁾ You are recommended to use ALCATEL ONETOUCH Bluetooth headsets, which have been tested and proved compatible with your phone. You can go to www.alcatelonetouch.com for more information about the ALCATEL ONETOUCH Bluetooth headset.

To pair/connect your phone with a Bluetooth device

To exchange data with another device, you need to turn Bluetooth on and pair your phone with the Bluetooth device with which you want to exchange data.

- Touch **Settings\Bluetooth**.
- Touch  and **Refresh**.
- Touch a Bluetooth device you want to be paired with in the list.
- A dialog will popup, touch **Pair** to confirm.
- If the pairing is successful, your phone connects to the device.

To disconnect/unpair from a Bluetooth device

- Touch the Settings icon  beside the device you want to unpair.
- Touch **Forget** to confirm.


6.4 Connecting to a computer⁽¹⁾

With the USB cable, you can transfer media files and other files between your internal storage and a computer.

To connect your phone to the computer:

To connect:

- Use the USB cable that came with your phone to connect the phone to a USB port on your computer. You will receive a notification that the USB is connected.
- Open the Notification panel and touch **Connected as a media device**, then, in the next dialog, choose the way in which you want to transfer files.

⁽¹⁾ You can change your default connection mode via **Settings\Storage** Touch the  icon **USB computer connection**. Some operations which are available under mass storage are not usable under MTP and PTP.



Before using MTP, make sure that the driver (Windows Media Player 11 or higher version) has been installed.

To locate the data you have transferred or downloaded in internal storage, touch **File Manager**. All data you have downloaded is stored in **File Manager**, where you can view media files (videos, photos, music and others), rename files, install applications into your phone, etc.

6.5 Sharing your phone's mobile data connection

You can share your phone's mobile data connection with a single computer via a USB cable (USB tethering) or with up to eight devices at once by turning your phone into a portable Wi-Fi hotspot.



The functions below may incur additional network charges from your network operator. Extra fees may also be charged in roaming areas.

To share your phone's data connection via USB

Use the USB cable that come with your phone to connect the phone to a USB port on your computer.

- Touch **Settings**\More...\Tethering & portable hotspot.
- Mark\unmark the checkbox of **USB tethering** to activate/deactivate this function.

To share your phone's data connection as a portable Wi-Fi hotspot

- Touch **Settings**\More...\Tethering & portable hotspot.
- Mark\unmark the checkbox of **Portable Wi-Fi hotspot** to activate/deactivate this function.

To rename or secure your portable hotspot

When a Portable Wi-Fi hotspot is activated, you can change the name of your phone's Wi-Fi network (SSID) and secure its Wi-Fi network.

- Touch **Settings**\More...\Tethering & portable hotspot.
- Touch **Set up Wi-Fi hotspot** to change the network SSID or set your network security.
- Touch **Save**.

To play media files on device with Wi-Fi Display feature

You can share your phone's data such as music and video file with your TV by enabling the Wi-Fi display.

- Touch **Settings**\Display\Wi-Fi Display.
- To use Wi-Fi display, you must turn on WI-FI.

6.6 Connecting to virtual private networks

Virtual private networks (VPNs) allow you to connect to the resources inside a secured local network from outside that network. VPNs are commonly deployed by corporations, schools, and other institutions so that their users can access local network resources when not inside that network, or when connected to a wireless network.

To add a VPN

- Touch **Settings**\More...\VPN and then touch **+**.
- In the screen that opens, follow the instructions from your network administrator to configure each component of the VPN settings.
- Touch **Save**.

The VPN is added to the list on the VPN settings screen.



Before adding a VPN, you should set a PIN code or password for your phone.

To connect/disconnect VPN

To connect to a VPN:

- Touch **Settings\More...\VPN**.
- VPNs you have added are listed; touch the VPN you want to connect with.
- In the dialog that opens, enter any requested credentials and touch **Connect**.

To disconnect:

- Open the Notification panel and touch the resulting notification for the VPN disconnection.

To edit/delete a VPN

To edit a VPN:

- Touch **Settings\More...\VPN**.
- VPNs you have added are listed; long press the VPN you want to edit.
- Touch **Edit profile**.
- After finishing, touch **Save**.


To delete:

- Touch and hold the VPN you want to delete, in the dialog that opens, touch **Delete profile**.

7 Google Play Store⁽¹⁾.....

Google Play Store is an online software store, where you can download and install applications and games to your Android Powered Phone.

To open Google Play Store:

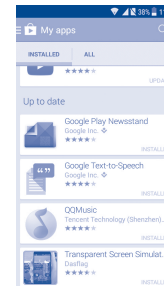
- Touch  from the Home screen, then touch **Play Store**.
- The first time you access Google Play Store, a screen with terms of service pops up for your attention.

Touch the **Menu** key then touch **Help** to enter the Google Play Store help page for more information on this function.

7.1 Locate the item you want to download and install

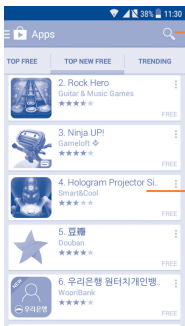
The Google Play Store home page provides several ways to find applications. It showcases applications and games in categorized listings.

Touch the  icon at the top left corner and **My Apps** to see all your downloads.



⁽¹⁾ Depending on your country and operator.

Touch a category on Google Play Store screen to browse its contents. You can also select a subcategory if there is any. Within each category you can select to view items sorted by Top free, Top new free and Trending, etc.



Touch to search in **Play Store**.


Slide left and right to see all categories.

Touch the Google Play Store icon  on the top left of the screen or touch the **Back** key to return to the previous screen.

7.2 Download and install

To download & install:


- Navigate to the item you want to download, and select to enter the details screen from which you can read its description, overall rating or comments, view developer's information, etc.
- Touch **Install** to preview the functions and data the application can access on your phone if you install it.
- Touch **Accept**.
- The progress of the download will show on the details screen, touch **STOP** to stop downloading the item. You can also access this screen through the Notification panel.

- After download and installation have finished, you will see a notification icon  on the status bar.



Be especially cautious with applications that have access to many functions or to a significant amount of your data. Once you accept, you are responsible for the results of using this item on your phone.

To open the application you have downloaded:

- On the Google Play Store screen, touch  and **My Apps**.
- Touch the installed application in the list, then touch **Open**.

To buy an application⁽¹⁾

On Google Play Store, some applications are labelled as free, while some of them are to be paid for before downloading and installing.


- Touch the application you want to buy.
- Touch the price on the upper-right of the screen to preview the functions and data the application can access on your phone if you install it.
- Touch **Continue** to confirm.
- When making your first purchase, you are required to input your credit card information and to log into the Google payment and billing service.
- If your account has multiple credit card accounts, select one to proceed.
- Select the Terms of service link and read the document. When finished, touch the **Back** key.
- Mark the checkbox if you agree with the terms of service.
- Touch the **Buy now** at the bottom of the screen.

When finished, Android downloads the application.

⁽¹⁾ Google Paid applications may not be available to users in some countries.

To request a refund

If you are not satisfied with the application, you can ask for a refund within 15 minutes of the purchase. Your credit card will not be charged and the application will be removed. If you change your mind, you can install the application again, but you will not be able to request a refund.

- Touch  and **My apps** from the Google Play Store screen.
- Touch the application that you want to uninstall and refund.
- Touch **Refund** to uninstall the application and refund. If the button becomes **Uninstall**, your trial period has expired.
- In the survey form, select the answer that best matches your reason, and touch **OK**.


7.3 Manage your downloads

After you have downloaded and installed an application, the following further operations are available for your selection.


View

On the Google Play Store screen, touch  and **My Apps**.


Uninstall

On the Google Play Store screen, touch  and **My Apps**. Touch the application you want to uninstall to enter the details screen, touch **Uninstall**, and finally touch **OK** to confirm.

Refund

On the Google Play Store screen, touch  and **My Apps**. Touch the application you want to uninstall for a refund, touch **Refund**, and finally touch **OK** to confirm.

Auto update

Touch  and **Settings\Auto-update apps** to enable this function. To auto update one specific application, mark the checkbox of **Do not auto-update apps**, **Auto-Update apps at any time**, or **Auto-update apps over Wi-Fi only** from the details screen.

Rate and review

Open the details screen for an application, touch the stars ★★★★★ under **Rate this app** to award and input comments, touch **OK** to confirm.

Flag

You can report an inappropriate application to the Google Play Store by flagging it. Open the details screen for the application, scroll to the bottom and touch **Flag as inappropriate**, enter the reason and finally touch **Submit**.

8 Multimedia applications

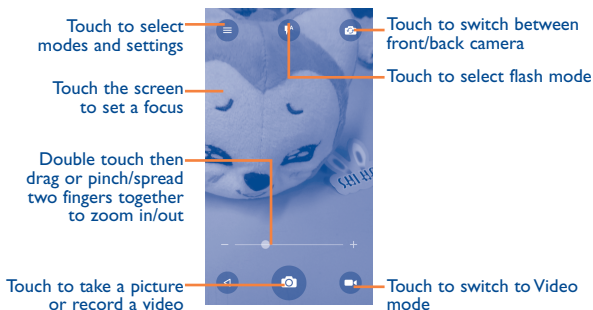
8.1 Camera/Camcorder




Your mobile phone is fitted with a Camera and a Camcorder for taking photos and shooting videos.

Before using the Camera or Camcorder, please be sure to remove the protective lens cover to avoid it affecting your picture quality.



To access this function, touch  from the Home screen and then touch **Camera**.






To take a picture

The screen acts as the viewfinder. First, position the object or landscape in the viewfinder, touch the screen to focus if necessary and touch the  icon to take the picture which will be automatically saved.

To shoot a video

Switch Camera mode to Video mode. First, position the object or landscape in the viewfinder and touch the  icon to start recording. Touch the  icon to stop recording. The video will be automatically saved.


Further operations when viewing a picture/video you have taken

- Slide left to quick view the picture you taken.
- Touch the  icon then Gmail, Bluetooth, MMS, etc to share the photo or video you have taken.
- Touch the  icon to access the **Gallery**.
- Touch the  icon to return to the **Camera** or **Camcorder**.

8.1.1 Settings in framing mode

Before taking a photo, touch  icon to adjust a range of settings in framing mode.

- **Auto mode** Touch to enable Auto mode.
- **HDR** Touch to enable the HDR mode.
- **Panorama** Touch to enable the panorama mode.
- **Manual mode** Touch to enable Manual mode.
- **Time-lapse** Touch to enable Time-lapse.
- **Scanner** Touch to scan QR code.
- **Face Beauty** Touch to enable Face Beauty.

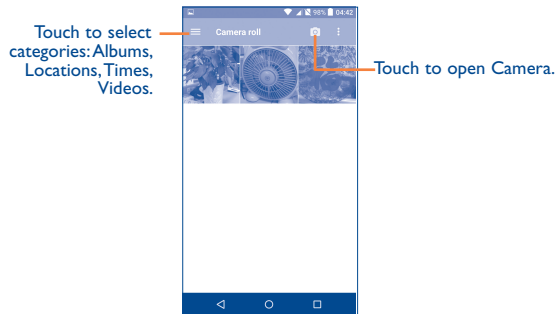
and touch the  icon to access Camera settings.

- **Size** Touch to set the photo size.
- **Timer** Touch to set the timer to OFF, 5s or 10s.
- **GPS tagging** Touch to turn on/off the GPS tagging.
- **Shutter sound** Touch to turn on/off the shutter sound.
- **Grid** Touch to turn on/off grid.
- **Exposure** Touch to set the exposure value.
- **Auto Scene** Touch to turn on/off auto scene.
- **Anti Banding** Touch to set anti banding.
- **Video quality** Touch to set video quality.
- **Sound recording** Touch to turn on/off sound recording.
- **EIS** Touch to turn on/off EIS.
- **Storage** Touch to set the photo or video storage location.

8.2 Gallery

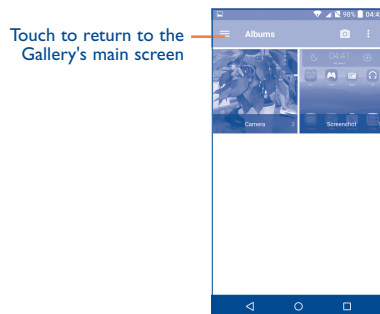
Gallery acts as a media player for you to view photos and playback videos. In addition, a set of further operations to pictures and videos are available for your choice.

To access this function, touch  from the Home screen, then touch **Gallery**.



To view a picture/play a video

Pictures and videos are displayed by albums in the **Gallery**.






- Touch an album and all pictures or videos will spread across the screen.
- Touch the picture/video directly to view or play it.
- Slide left/right to view previous or next pictures/videos.

Working with pictures

Gallery provides a multi-select function, so that you can work with pictures/videos in batches.

You can touch one album, then slide left or right to view the pictures.

Touch a picture you want to work on, touch the  icon to delete a selected one. Touch  to share selected ones.

Touch the  icon to set them as contact ID or wallpaper, etc.


Touch  from full-screen picture view to access more options.



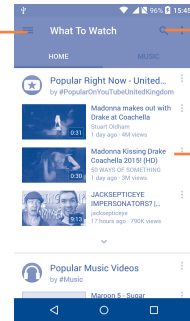
8.3 YouTube

YouTube is an online video-sharing service where the user can download, share and view videos. It supports a streaming function that allows you to start watching videos almost as soon as they begin downloading from the Internet.

To access this function, touch  from the Home screen, then touch **YouTube**.

 As an online video service, your phone must have a network connection to access YouTube.

Touch to show more information.



Touch to search for a video.

Touch to play the video.

By touching the **Menu** key from the YouTube screen, you can set General settings for YouTube. For details about these features, please visit the YouTube website: www.YouTube.com.

8.3.1 Watch videos

Touch a video to play it. In the Playing screen, you can view information and comments of the video and also access related ones. You can also rate, share, label as favourite, create a new playlist, etc. from this screen.

To exit the video playing screen, touch the **Back** key to return to the video list.

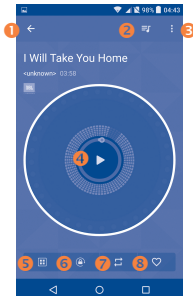
8.4 Mix

Using this menu, you can play music files stored on phone storage in your phone. Music files can be downloaded from your computer to phone using a USB cable.

To access this function, touch  from the Home screen, then touch **Mix**.

8.4.1 Playing music

Touch a song to play it.



- 1 Touch to go back to the previous screen.
- 2 Touch to access the song list.
- 3 Touch to access more options.
- 4 Touch to play or pause.
- 5 Touch to choose the sound effect.
- 6 Touch to lock/unlock the screen.
- 7 Touch to toggle repeat mode: Repeating all songs, Repeating current song, or Repeat is off.
- 8 Touch to label the song to your favourites.



While playing songs with Music, the operation of pause, play or skip is still available even if the screen is locked.

9 Google Maps.....


9.1 Get My Location


9.1.1 Choose a data source to identify My Location

Touch **Settings****Location** and then touch the switch .

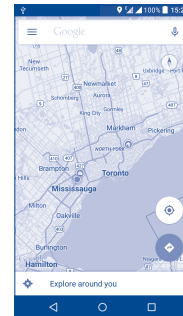
There are 3 modes to choose from to determine the location: High accuracy, Battery saving and Device only.

9.1.2 Open Google Maps and view My Location

Touch  from the Home screen, then touch **Maps**.

Touch the  icon on the map to view **My Location**.

The map will then centre on a blue dot surrounded by a blue circle. Your actual position is within the blue circle.



To move the map, drag it with your finger.

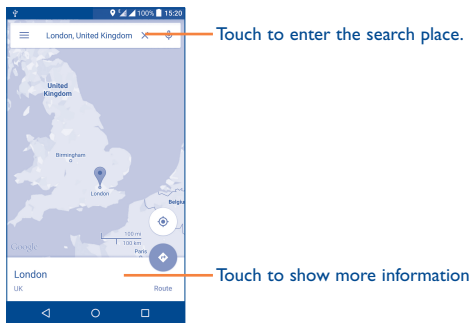
To zoom in and out of a map, pinch or spread your fingers, or you can also zoom in by double-tapping a location on screen.

9.2 Search for a location

While viewing a map, touch Google at the top search box to activate the search function.

In the search box, enter an address, a city or a local business.

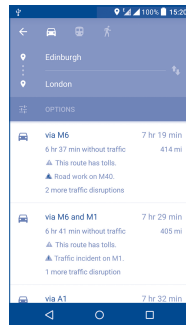
Touch  and in a while your search results will appear on the map as red dots. You can touch one to show a label.





9.3 Get driving, public transport or walking directions


9.3.1 Get suggested routes for your trip

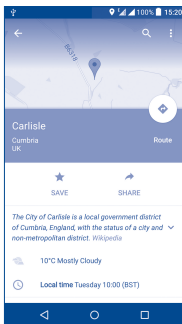
Touch the icon  from the Maps screen.



- Touch the enter bar to edit your start point by one of the following methods: entering an address or using My Location.
- Do likewise for your end point.
- To reverse directions, touch the icon .
- Then select a transport mode: driving by car, using public transport, or walking directions.
- A couple of suggested routes will appear in a list. Touch any routes to view their respective detailed directions.
- Touch the  icon for route options to avoid motorways and tolls when choosing to drive by car or for editing the departure and arrival time when using public transport.

9.4 Share a location

- Long press a location on a map.
- Touch the information at the bottom then touch the icon  to share the location.



10 Others.....

10.1 File Manager.....

To access this function, touch  from the Home screen, then touch **File Manager**.

File Manager displays all data stored on the phone, including applications, media files downloaded from Google Play Store, YouTube or other locations; videos, pictures or audios you have captured; other data transferred via Bluetooth, USB cable, etc.

When you download an application from PC to phone, you can locate the application using File Manager, then touch it to install it in your phone.

File Manager allows you to perform and be really efficient with the following common operations: create (sub) folder, open folder/file, view, rename, move, copy, delete, play, share, etc.

10.2 Sound Recorder.....

To access this function, touch  from the Home screen, then touch **Sound Recorder**.


Sound Recorder allows you to record voice/sound for seconds/hours.

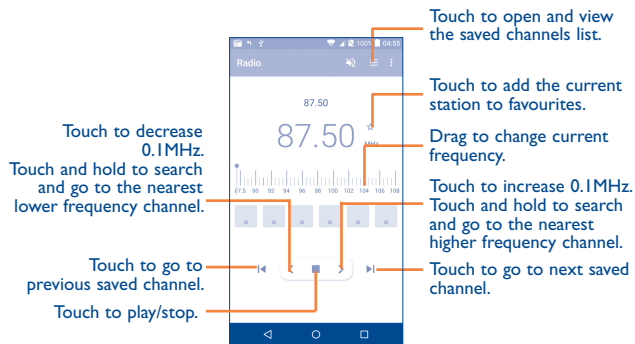
10.3 Radio



Your phone is equipped with a radio⁽¹⁾ with RDS⁽²⁾ functionality. You can use the application as a traditional radio with saved channels or with parallel visual information related to the radio program on the display if you tune to stations that offer Visual Radio service.

To access this function, touch  from the Home screen, then touch **Radio**.

 To use it, you must plug in your headset, which works as an antenna connected with your phone.



⁽¹⁾ The quality of the radio depends on the coverage of the radio station in that particular area.

⁽²⁾ Depending on your network operator and market.

Available options:

- **Save channel** Save the current tuned station to the channels list.
- **Edit name** Edit the channel name.
- **Scan channels** Touch to search for channels.
- **Audio mode** Listen to the radio using loudspeaker or headset.
- **Delete** Delete the channel
- **Enter frequency** Enter the frequency manually.
- **Exit** Turn off the radio.

10.4 Notes.....



To access this function, touch  from the Home screen, then touch **Notes**.

Use **Notes** to note down inspirations, ideas, excerpts, things to do and all those things you may want to keep for future reference.

Existing notes can be sent via Bluetooth, message or Email.

10.5 Other applications⁽¹⁾.....

The previous applications in this section are preinstalled on your phone. To read a brief introduction of the preinstalled 3rd party applications, please refer to the leaflet provided with the phone. You can also download thousands of 3rd party applications by going to Google Play Store on your phone.

⁽¹⁾ Application availability depends on country and operator.

Settings.....

To access this function, touch  from the Home screen, then touch **Settings**.

11.1 Wireless & network

11.1.1 Wi-Fi

Using Wi-Fi you can now surf the Internet without using your SIM card whenever you are in range of a wireless network. The only thing you have to do is to enter the **Wi-Fi** screen and configure an access point to connect your phone to the wireless network.

For detailed instructions on using Wi-Fi, please refer to “**6.1.2 Wi-Fi**”.

11.1.2 Bluetooth

Bluetooth allows your phone to exchange data (videos, images, music, etc.) within a small range with another Bluetooth supported device (phone, computer, printer, headset, car kit, etc.).

For more information on Bluetooth, please refer to “**6.3 Connecting to Bluetooth devices**”.

11.1.3 SIM cards

By touching the options to select SIM 1 or SIM 2 to enable, set the name, connect the network, calls and send SMS Messages.

11.1.4 Data usage

Cellular data

If you do not need to transmit data on all mobile networks, turn off **Data enabled** to avoid incurring significant charges for data use on local carrier mobile networks, particularly if you do not have a mobile data agreement.

Set cellular data limit

By touching the **Set cellular data limit** switch, your mobile data connection will be disabled when your specified limit is reached. You can also choose a data usage cycle to view the statistics and applications related to the data use of your phone.



Data usage is measured by your phone, and your carrier may count differently. Please consider using a conservative limit.

11.1.5 More... \Aeroplane mode

Touch the switch of **Aeroplane mode** to simultaneously disable all wireless connections including Wi-Fi, Bluetooth and more.

11.1.6 More... \Default SMS app

Touch to set the default SMS app.

11.1.7 More... \Tethering & portable hotspot

This function allows you to share your phone's mobile data connection via USB or as a portable Wi-Fi access point (Please refer to “**6.5 Sharing your phone's mobile data connection**”).

11.1.8 More...\VPN

A mobile virtual private network (mobile VPN or mVPN) provides mobile devices with access to network resources and software applications on their home network, when they connect via other wireless or wired networks. Mobile VPNs are used in environments where workers need to keep application sessions open at all times, throughout the working day, as the user connects via various wireless networks, encounters gaps in coverage, or suspends-and-resumes their devices to preserve battery life. A conventional VPN can't survive such events because the network tunnel is disrupted, causing applications to disconnect, time out, fail, or even the computing device itself to crash.

For more information on VPN, please refer to “**6.6 Connecting to virtual private networks**”.

11.1.9 More...\NFC

Touch the switch to enable and disable the NFC.

The function allows data exchange when the phone touches another device.

11.1.10 More...\Android Beam

The Android beam can be activated when NFC is on.

The function allows to transmit app content via NFC.

11.1.11 More...\Mobile networks

Data roaming

If you don't need to transmit data on other carriers' mobile networks, disable **Data roaming** to avoid incurring significant roaming charges.

Preferred network mode

You can set your preferred network mode, such as GSM/WCDMA, LTE etc.

Access Point Names

You can select your preferred network with this menu.

Network operators

You can select a network operator.

11.1.12 More...\Emergency alerts

Emergency alerts

- **Presidential:** Presidential alerts are always displayed.
- **Show extreme threats:** Mark the checkbox to display alerts for extreme threats to life and property.
- **Show severe threats:** Mark the checkbox to display alerts for severe threats to life and property.
- **Show AMBER threats:** Mark the checkbox to display child abduction emergency bulletins.
- **Turn on notifications:** Mark the checkbox to display emergency alert broadcasts.
- **Vibrate:** Mark the checkbox to activate vibration when alert incoming.

Preview notification

- **Alert tone:** When **Turn on notifications** enabled, touch to preview emergency alert tone.
- **Vibration:** Touch to vibrate the phone.
- **Speak alert message:** Mark the checkbox to use text-to-speech to speak emergency alert message.

ETWS settings

- **Show ETWS test broadcasts:** Mark the checkbox to display test broadcasts for Earthquake Tsunami Warning System.

11.2 Device

11.2.1 Gesture

The device allows you to select the following gestures:

- **Double tap screen** Mark the checkbox to enable the function that lets you turn the screen on or off by a double tap.
- **Turn over to mute** Mark the checkbox to mute ringtones such as alarms, incoming calls etc. by turning the phone over.
- **Turn over to activate** Touch to set whether to activate the snooze feature or dismiss a ringtone when the device is turned over.

11.2.2 Sound & notification

Use the Sound settings to configure many aspects of call and notification ringtones, music, and other audio settings.

- **Sound** Touch to set volume for Media, Ringtone, Notifications and Alarm.
- **JBL** Touch to enable/disable JBL. The function is only for music play.
- **Headset mode** Mark the checkbox to enable headset mode. Ringtones will only be heard from the headset if it is plugged in.
- **Vibrate for calls** Touch to vibrate phone for incoming calls.
- **Interruptions** Touch to set whether interrupt and priority interruptions.
- **Ringtone** Touch to set your incoming call ringtone.
- **Default notification ringtone** Touch to set the default sound for notifications.
- **Mute power on & off ringtone** Touch to enable/disable the power on & off ringtone.
- **Other sounds** Touch to set dial pad tones, screen locking sounds, touch sounds and vibrate on touch.
- **When device is locked** Touch to show all notification content or don't show notification at all.
- **App notifications** Touch to set block and priority for app notifications.
- **Notification access** Touch to view the notification listeners.

11.2.3 Display

- **Brightness level** Touch to set the level of brightness.
- **Adaptive brightness** Touch to enable automatic adjustment of the screen brightness.
- **Wallpaper** Touch to set the wallpaper.
- **Sleep** Touch to set screen timeout.
- **Daydream** Touch to set the Daydream.
- **Font size** Touch to set the font size.
- **When device is rotated** Touch to set whether rotate the contents of the screen or stay in portrait view.
- **Reversible** Mark the checkbox to activate the reversible mode.
- **Reversible animation** Touch to set the animation of reversible.
- **Wi-Fi Display** Touch to turn on and turn off Wi-Fi Display.

11.2.4 Lock screen

Func

After Func is activated, a couple of apk shortcuts will be displayed on your lock screen.

Screen lock

- **None** Touch to disable screen unlock security.
- **Swipe** Touch to enable slide unlock mode.
- **Face Unlock** Touch to look at your phone to unlock screen.
- **Pattern** Touch to draw a pattern to unlock screen.
- **PIN** Touch to enter a numeric PIN to unlock screen.
- **Password** Touch to enter a password to unlock screen.
- **Eye-D** Touch to set the lock pattern to Eye-D. Eye-D is a secure biometric that uses the smartphone camera to image and pattern match the blood vessels in the whites of the eye.

Owner info

Touch to input owner information which will display on the locked screen.

Smart Lock

You must set a screen lock first when you enable this function.

11.2.5 LED indicator

Touch to turn on/off the LED indicator.

11.2.6 Storage

Use these settings to monitor the total and available space on your phone, if necessary, to reset the phone, erasing all of your personal information.

This menu displays the amount of internal phone storage in different colours. The available space will be shown in grey, which shows the amount of internal phone storage used by the operating system, its components, applications (including those you downloaded), permanent and temporary data.

11.2.7 Battery

Touch any category in the battery management screen to view its power consumption.

You can adjust power use via the screen brightness or screen timeout settings in the Display screen. You can also set your phone to saving mode or ultimate saver mode. In the latter, only four functions can be used including Phone, Contacts, Messaging and Calendar.

11.2.8 Applications

Use the Manage applications settings to view details about the applications installed on your phone, to manage their data and force them to stop, and to set whether you want to permit installation of applications that you obtain from web sites and emails.


Manage Apps

- **Downloaded:** Touch to manage and remove installed applications.
- **Running:** Touch to view and control currently running service.
- **All:** Touch to view storage used by applications.

11.3 Personal

11.3.1 Location

On

Touch the  switch to enable the use of information from Wi-Fi and mobile networks to determine your approximate location, for use in Google Maps, when you search, and so on. When you select this option, you're asked whether you consent to share your location anonymously with Google's location service.

Mode

Touch to select High accuracy, Battery saving or Device only mode.

- **High accuracy:** Use GPS, Wi-Fi and mobile network to determine location.
- **Battery saving:** Use Wi-Fi to determine location.
- **Device only:** Use GPS to determine location.

Recent location requests

In the list, it will show recent location requests.

11.3.2 Security

Encrypt phone

Require a numeric PIN or passwords to decrypt your phone each time you power it on.

Set up SIM/RUIM card lock

- Mark the checkbox of **Lock SIM card** to lock the SIM card with a PIN code.
- Touch **Change SIM PIN** to change the PIN code.

Make passwords visible

Mark the checkbox to show passwords as you type.

Device administrators

Touch to view or deactivate device administrators.

Unknown sources

Mark the checkbox to permit installation of applications that you obtain from websites, emails, or other locations other than Google Play Store.

To protect your phone and personal data, download applications only from trusted sources, such as Google Play Store.

Trusted credentials

Touch to display trusted CA certificates.

Install from storage

Touch to install encrypted certificates from the phone storage.

Clear credentials

Touch to remove all certificates.

11.3.3 Language & input

Use the Language & input settings to select the language for the text on your phone and for configuring the onscreen keyboard. You can also configure voice input settings and the pointer speed.

Language

Touch to select the language and the region you want.

Spell checker

Mark the checkbox to enable the system to show suggested words.

Personal dictionary

Touch to open a list of the words you've added to the dictionary. Touch a word to edit or delete it. Touch the add button (+) to add a word.


Current Keyboard

Touch to select a default input method.

Voice input

Touch to view settings about voice input

Text-to-speech output

- **Preferred engine:** Touch to choose a Preferred text-to-speech engine, touch the settings icon  to show more choices for each engine.
- **Speech rate:** Touch to open a dialog where you can select how quickly you want the synthesizer to speak.
- **Listen to an example:** Touch to play a brief sample of the speech synthesizer, using your current settings.

Pointer speed

Touch to open a dialog where you can change the pointer speed, touch **OK** to confirm.

11.3.4 Backup & reset

Back up my data

Touch the switch to back up your phone's settings and other application data to Google Servers, with your Google Account. If you replace your phone, the settings and data you've backed up are restored onto the new phone for the first time you sign in with your Google Account. If you mark this option, a wide variety of settings and data are backed up, including your Wi-Fi passwords, bookmarks, a list of the applications you've installed, the words you've added to the dictionary used by the onscreen keyboard, and most of the settings that you configure with the Settings application. If you unmark this option, you stop backing up your settings, and any existing backups are deleted from Google Servers.

Back up account

Touch to back up your account.

Automatic restore

Touch the switch to restore your backed up settings or other data when you reinstall an application.

Factory data reset

Erase all of your personal data from internal phone storage, including information about your Google Account, any other accounts, your system and application settings, and any downloaded applications. Resetting the phone does not erase any system software updates you've downloaded. If you reset the phone in this way, you're prompted to re-enter the same kind of information as when you first started Android.

When you are unable to power on your phone, there is another way to perform a factory data reset by using hardware keys. Press the **Volume up** key and the **Power** key at same time until the screen lights up.

11.4 System

11.4.1 Date & time

Use Date & time settings to customise your preferences for how date and time are displayed.

Automatic date & time

Mark the checkbox to use the network-provided date and time. Unmark to set all values manually.

Automatic time zone

Mark the checkbox to use the network-provided time zone. Unmark to set all values manually.

Set date

Touch to open a dialog where you can manually set the phone's date.

Set time

Touch to open a dialog where you can manually set the phone's time.

Select time zone

Touch to open a dialog where you can set the phone's time zone.

Use 24-hour format

Mark the checkbox to display the time using the 24-hour clock format.

Choose date format

Touch to open a dialog where you can select the format for displaying dates.

11.4.2 Accessibility

Use the Accessibility settings to configure any accessibility plug-ins you have installed on your phone.

TalkBack

When Talkback is on, your device provides spoken feedback to help blind and low vision users.

Switch Access

Touch to turn on/off switch access.

Captions

Touch to activate/deactivate captions for phone screen.

Magnification gestures

Touch to turn on/off to activate/deactivate zoom in/out function by triple-tapping the screen.

Large text

Mark the checkbox to enlarge the screen text.

High contrast text

Mark the checkbox to activate high contrast text.

Power button ends call

Mark the check box to enable Power button ends call.

Auto-rotate screen

Mark the checkbox to activate auto-rotate screen.

Speak passwords

Mark the checkbox to speak passwords while typing.

Accessibility shortcut

Touch to turn on/off to enable/disable accessibility features.

Text-to-speech output

Refer to "Preferred engine/Speech rate/Listen to an example" setting before.

Touch & hold delay

Touch to adjust the duration of touch and hold delay. This function enables your phone to differ touch and touch & hold, which may avoid incorrect operations.

Colour inversion

Touch the switch to turn on/off colour inversion.

Colour correction

Touch to turn on/off colour correction.

11.4.3 Regulatory & Safety

Touch to view product information.

11.4.4 About phone

This contains information about things ranging from Legal information, Model number, Firmware version, Baseband version, Kernel version, Build number to those listed below:

System updates

Touch to check for system updates.

Status

This contains the status of the Battery status, Battery level, My phone number, Network, Signal strength, etc.

Legal information

Touch to view legal information.

12 Making the most of your phone

12.1 Smart Suite

You can download software upgrades for free from the website (www.alcatelonetouch.com). Smart Suite includes:

- **Contacts**

Allows you to back up contact entries so that you don't have to worry about losing, breaking, switching phones or changing service providers.

- **Messages**

Frees you from painstakingly inputting text on the keypads. All of your messages are easily accessible and well-organised.

- **Calendar**

Allows you to sync events freely between your phone and Outlook and create and edit new events from a PC.

- **Photos**

Allows you to easily import photos from your PC or the handset and organise them in different albums for better management.

- **Videos**

Allows you to insert video files from your PC for playback and then upload them to a handset folder.

- **Music**

Allows you to quickly search for your favourites in your PC, manage the ultimate Library, and enjoy the easiest digital jukebox in your own mobile way.

- **Application**

Allows you to import downloaded mobile applications and have them installed into your handset upon synchronisation.

- **Backup**

Allows you to back up your contacts, messages, calendar, photos and applications, then import the backup files to your phone.

Supported Operating Systems

Windows XP/Vista/Windows 7/Windows 8.

12.2 Upgrade

You can use the Mobile Upgrade tool or FOTA Upgrade tool to update your phone's software.

12.2.1 Mobile Upgrade

Download Mobile Upgrade from ALCATEL ONETOUCH website (www.alcatelonetouch.com) and install it on your PC. Launch the tool and update your phone by following the step by step instructions (refer to the User Guide provided together with the tool). Your phone's software will now have the latest software.



All personal information will be permanently lost following the update process. We recommend you backup your personal data using Smart Suite before upgrading.

12.2.2 FOTA Upgrade

Using the FOTA Upgrade tool you can update your phone's software.

To access **System updates**, touch **Settings\About phone\System updates**. Touch **Check for updates**, and the phone will search for the latest software. If you want to update the system, touch the button **Download**, after it is done touch **Install** to complete the upgrade. Now your phone's software will be the latest version.

You should turn on data connection before searching for updates. Settings for auto-check intervals is also available once you restart the phone.

If you have chosen auto-check, when the system discovers the new version, dialog will pop up to choose **Download** or ignore, the notification also will show in status bar.

13 Telephone warranty

Your phone is warranted against any defect or malfunctioning which may occur in conditions of normal use during the warranty period of twelve (12) months⁽¹⁾ from the date of purchase as shown on your original invoice.

Batteries⁽²⁾ and accessories sold with your phone are also warranted against any defect which may occur during the first six (6) months⁽¹⁾ from the date of purchase as shown on your original invoice.

In case of any defect of your phone which prevents you from normal use thereof, you must immediately inform your vendor and present your phone with your proof of purchase.

If the defect is confirmed, your phone or part thereof will be either replaced or repaired, as appropriate. Repaired phone and accessories are entitled to a one (1) month warranty for the same defect. Repair or replacement may be carried out using reconditioned components offering equivalent functionality.

This warranty covers the cost of parts and labour but excludes any other costs.

⁽¹⁾ The warranty period may vary depending on your country.

⁽²⁾ The life of a rechargeable mobile phone battery in terms of conversation time standby time, and total service life, will depend on the conditions of use and network configuration. Batteries being considered expendable supplies, the specifications state that you should obtain optimal performance for your phone during the first six months after purchase and for approximately 200 more recharges.

This warranty shall not apply to defects to your phone and/or accessory due to (without any limitation):

- 1) Non-compliance with the instructions for use or installation, or with technical and safety standards applicable in the geographical area where your phone is used,
- 2) Connection to any equipment not supplied or not recommended by TCL Communication Ltd.,
- 3) Modification or repair performed by individuals not authorised by TCL Communication Ltd. or its affiliates or your vendor,
- 4) Modification, adjustment or alteration of software or hardware performed by individuals not authorised by TCL Communication Ltd.,
- 5) Inclement weather, lightning, fire, humidity, infiltration of liquids or foods, chemical products, download of files, crash, high voltage, corrosion, oxidation...

Your phone will not be repaired in cases where labels or serial numbers (IMEI) have been removed or altered.

There are no express warranties, whether written, oral or implied, other than this printed limited warranty or the mandatory warranty provided by your country or jurisdiction.

In no event shall TCL Communication Ltd. or any of its affiliates be liable for indirect, incidental or consequential damages of any nature whatsoever, including but not limited commercial or financial loss or damage, loss of data or loss of image to the full extent those damages can be disclaimed by law.

Some countries/states do not allow the exclusion or limitation of indirect, incidental or consequential damages, or limitation of the duration of implied warranties, so the preceding limitations or exclusions may not apply to you.

14 Accessories

The latest generation of ALCATEL ONETOUCH mobile phones offers a built-in handsfree feature that allows you to use the telephone from a distance, placed on a table for example. For those who prefer to keep their conversations confidential, an earpiece is also available known as the headset.


1. Charger
2. USB cable
3. Echo headset
4. QG
5. SIM tooling pin



Only use your telephone with the ALCATEL ONETOUCH batteries, chargers and accessories in your box.

15 Troubleshooting.....

Before contacting the service centre, you are advised to follow the instructions below:

- You are advised to fully charge () the battery for optimal operation.
- Avoid storing large amounts of data in your phone as this may affect its performance.
- Use Factory data reset and the upgrade tool to perform phone formatting or software upgrading (to reset factory data, hold down the **Power** key and the **Volume up** key at the same time). ALL User phone data: contacts, photos, messages and files, downloaded applications will be lost permanently. It is strongly advised to fully backup the phone data and profile via Smart Suite before doing formatting and upgrading.

and carry out the following checks:

My phone cannot be switched on or is frozen

- When the phone cannot be switched on, charge for at least 20 minutes to ensure the minimum battery power needed, then try to switch on again.
- When the phone falls into a loop during power on-off animation and the user interface cannot be accessed, press and hold the Volume down key to enter Safe Mode. This eliminates any abnormal OS booting issues caused by 3rd party APKs.
- If neither method is effective, please reset the phone using the Power key and the Volume up key, (holding both together).

My phone has not responded for several minutes

- Restart your phone by pressing and holding the Power key more than 9s.

My phone turns off by itself

- Check that your screen is locked when you are not using your phone, and make sure the **Power** key is not mis-contacted due to an unlocked screen.
- Check the battery charge level.

My phone cannot charge properly

- Make sure you are using an ALCATEL ONETOUCH charger from the box.
- Make sure that your battery is not completely discharged; if the battery power is empty for a long time, it may take around 20 minutes to display the battery charger indicator on the screen.

- Make sure charging is carried out under normal conditions (0°C to +40°C).
- When abroad, check that the voltage input is compatible.

My phone cannot connect to a network or “No service” is displayed

- Try connecting in another location.
- Verify the network coverage with your operator.
- Check with your operator that your SIM card is valid.
- Try selecting the available network(s) manually (see “1.1.9 More...NFC”)
- Try connecting at a later time if the network is overloaded.


My phone cannot connect to the Internet

- Check that the IMEI number (press *#06#) is the same as the one printed on your warranty card or box.
- Make sure that the internet access service of your SIM card is available.
- Check your phone's internet connecting settings.
- Make sure you are in a place with network coverage.
- Try connecting at a later time or another location.

Invalid SIM card

- Make sure the SIM card has been correctly inserted (see “Inserting or removing the SIM card”).
- Make sure the chip on your SIM card is not damaged or scratched.
- Make sure the service of your SIM card is available.

Unable to make outgoing calls

- Make sure you have dialled a valid number and have touched  .
- For international calls, check the country and area codes.
- Make sure your phone is connected to a network, and the network is not overloaded or unavailable.
- Check your subscription status with your operator (credit, SIM card valid, etc.).
- Make sure you have not barred outgoing calls.
- Make sure that your phone is not in flight mode.

Unable to receive incoming calls

- Make sure your phone is switched on and connected to a network (check for overloaded or unavailable network).
- Check your subscription status with your operator (credit, SIM card valid, etc.).
- Make sure you have not forwarded incoming calls.

- Make sure that you have not barred certain calls.
- Make sure that your phone is not in flight mode.


The caller's name/number does not appear when a call is received

- Check that you have subscribed to this service with your operator.
- Your caller has concealed his/her name or number.

I cannot find my contacts

- Make sure your SIM card is not broken.
- Make sure your SIM card is inserted properly.
- Import all contacts stored in SIM card to phone.

The sound quality of the calls is poor

- You can adjust the volume during a call by pressing the **Volume Up/Down** key.
- Check the network strength .
- Make sure that the receiver, connector or speaker on your phone is clean.

I am unable to use the features described in the manual

- Check with your operator to make sure that your subscription includes this service.
- Make sure this feature does not require an ALGATEL ONETOUCH accessory.

When I select a number from my contacts, the number cannot be dialled

- Make sure that you have correctly recorded the number in your file.
- Make sure that you have selected the country prefix when calling a foreign country.

I am unable to add a contact in my contacts

- Make sure that your SIM card contacts are not full; delete some files or save the files in the phone contacts (i.e. your professional or personal directories).

My callers are unable to leave messages on my voicemail

- Contact your network operator to check service availability.

I cannot access my voicemail

- Make sure your operator's voicemail number is correctly entered in "Voicemail number".
- Try later if the network is busy.

I am unable to send and receive MMS

- Check your phone memory availability as it might be full.
- Contact your network operator to check service availability and check MMS parameters (see "4.1.3 Adjust message settings").

- Verify the server centre number or your MMS profile with your operator.
- The server centre may be swamped, try again later.

SIM card PIN locked

- Contact your network operator to obtain the PUK code (Personal Unblocking Key).

I am unable to connect my phone to my computer

- Install Smart Suite.
- Check that your USB driver is installed properly.
- Check that your computer meets the requirements for Smart Suite Installation.
- Make sure that you're using the right cable from the box.

I am unable to download new files

- Make sure there is sufficient phone memory for your download.
- Check your subscription status with your operator.

The phone cannot be detected by others via Bluetooth

- Make sure that Bluetooth is turned on and your phone is visible to other users (see "6.3 Connecting to Bluetooth devices").
- Make sure that the two phones are within Bluetooth's detection range.

How to make your battery last longer

- Make sure you follow the complete charge time (minimum 3 hours).
- After a partial charge, the battery level indicator may not be exact. Wait for at least 20 minutes after removing the charger to obtain an exact indication.
- Adjust the brightness of screen as appropriate.
- Extend the email auto-check interval for as long as possible.
- Update news and weather information on manual demand, or increase their auto-check interval.
- Exit background-running applications if they are not being used for a long time.
- Deactivate Bluetooth, Wi-Fi, or GPS when not in use.

The phone will become warm following prolonged calls, game playing, internet surfing or running other complex applications.

- This heating is a normal consequence of the CPU handling excessive data. Ending above actions will make your phone return to normal temperatures.

16 Specifications

Processor	Qualcomm® 8939 Quad core 1.5G Hz
Platform	Android™ L
Memory	ROM: 16 GB RAM: 2 GB
Dimensions (LxWxT)	152.7*75.14*7.4mm
Weight	Around 140.7 grams with battery
Display	5.5-inch FHD touchscreen with (1920×1080) resolution
Network	CSFB: B1/3/7/8/20 UMTS: Quad-band 850/900/1900/2100 MHz GSM: Quad-band 850/900/1800/1900 MHz (Band frequency and data speed are operator dependent.)
GPS	Assisted GPS/Glonass GPS
Connectivity	<ul style="list-style-type: none"> • Bluetooth BT4.1,LE • Wi-Fi IEEE 802.11 a/b/g/n • 3.5 mm audio jack • Micro-USB

Camera	<ul style="list-style-type: none"> • 13 megapixel colour back camera • 8.0 megapixel colour front camera
Audio supported formats	AAC LC/LTP,AAC+, enhanced AAC+,AMR-NB,AMR-WB,FLAC,MP3,MIDI,Vorbis,PCM/WAVE
Video supported formats	H.263, H.264 AVC, MPEG-4 SP,VP8
Battery	<ul style="list-style-type: none"> • Rechargeable Li-polymer battery • Capacity: 2910 mAh
Special Features	<ul style="list-style-type: none"> • G-sensor • Light Sensor • Proximity Sensor • E-Compass • Gyroscope

Note: Specifications are subject to change without prior notice.

ALCATEL is a trademark of Alcatel-Lucent
and is used under license by
TCL Communication Ltd.

© Copyright 2015 TCL Communication Ltd.
All rights reserved

TCL Communication Ltd. reserves
the right to alter material
or technical specification
without prior notice.

All "Signature" ringtones embedded in this phone have been composed,
arranged and mixed by NU TROPIC (Amar Kabouche).