

# Acer F900

## User Guide

© 2009 All Rights Reserved

Acer F900 Smartphone User Guide

First issue: March 2009

Acer F900 Smartphone

Model number: \_\_\_\_\_

Serial number: \_\_\_\_\_

Date of purchase: \_\_\_\_\_

Place of purchase: \_\_\_\_\_

# Table of Contents

---

## Get to know your Acer F900 Smartphone

Features and functions ..... 5

Other sources of help ..... 6

### Chapter 1: Set Up

Unpack your smartphone ..... 7

Get to know your smartphone ..... 8

Install the SIM card ..... 11

Remove the SIM card and battery ..... 13

Charge the battery ..... 14

Turn on for the first time ..... 15

The Home screen ..... 17

Connecting to your PC and synchronizing data ... 19

### Chapter 2: Making Calls

Before making a call ..... 21

The onscreen number pad ..... 22

Make a call ..... 22

The voice call screen ..... 24

Onscreen call options ..... 25

### Chapter 3: Input Devices

The stylus ..... 29

The application buttons ..... 29

The onscreen keyboard ..... 30

### Chapter 4: Messaging

The messaging screen ..... 33

Text (SMS) messages ..... 34

MMS messages ..... 35

Email ..... 38

### Chapter 5: Home Screen Overview

The Home screen	39
Customize basic settings	42
<b>Chapter 6: Using the Camera</b>	
Camera icons and indicators	46
Take a photo	47
Shoot a video	48
Photo and video options	49
<b>Chapter 7: Advanced Operation</b>	
Put your smartphone in flight mode	51
Comm. Manager	52
Adjust connection settings	52
Phone settings	57
Manage contacts	59
Namecard Manager	62
SIM Manager	63
Connect to a PC and install software	65
Other functions	66
Multimedia playback	67
Reset your smartphone	74
<b>Chapter 8: Accessories and Tips</b>	
Use the stereo headset	77
Use a Bluetooth headset	77
Use your smartphone as a modem	78
Insert a micro SD card	81
<b>Appendix</b>	
FAQ, troubleshooting and error messages	83
Specifications	86
Warnings and precautions	88
Emergency calls	94
Disposal and recycling information	95
Taking care of your smartphone	96
Safety regulations	97

# Get to know your Acer F900 Smartphone

---

## Features and functions

Your new smartphone is a multi-functional tool packed with intuitive features and powerful applications that make organizing your information and synchronizing it with your personal activities an easy, efficient task. Your smartphone lets you:

- Synchronize email with your server while on the move.
- Make voice calls and video calls when connected to a 3G/EDGE/GPRS/HSUPA/HSDPA network.
- Connect wirelessly to your local network to access the internet and other network features.
- Use the customizable Home screen to access a wide range of software to perform common tasks on the Windows Mobile 6.1 Professional platform.
- Synchronize the information on your computer with the information on your smartphone.
- Exchange information between devices that have Bluetooth/WLAN capabilities.

## Product features

- Samsung SC3 6410 533 MHz processor
- 256 MB of ROM, 128 MB of RAM (16 MB shared with modem)
- 3.8" 800 x 480-pixel TFT-LCD touchscreen
- Micro SD memory card slot
- 10-pin mini USB connector

- High-density, rechargeable 1530 mAh Lithium Polymer battery (changeable)
- DC power-in (5 V, 1 A)
- Microsoft Windows Mobile 6.1 Professional Edition

## Other sources of help

For more on using your smartphone, please see these guides:

For information on:	Refer to:
Programs on your smartphone and additional programs that can be installed on your smartphone	This User Guide. Included on the bundled CD, it provides online reference for using your smartphone. The smartphone help file. Select <b>Help</b> from the <b>Start</b> menu.
Connecting to and synchronizing with your computer	The Quick Start Guide. ActiveSync Help on your computer. To view Help, click <b>Help</b> and then <b>Microsoft ActiveSync Help</b> .
Last-minute updates and detailed technical information	The Read Me files. Located in the Microsoft ActiveSync folder on your computer and on the Getting Started CD.
Up-to-date information regarding your smartphone	<a href="http://www.acer.com/">http://www.acer.com/</a>
Service enquiries	<a href="http://www.acer.com/support/">http://www.acer.com/support/</a>

## Accessing the help menus

Your smartphone features detailed help menus to aid you in making connections and using the embedded applications.

1. Tap **Start** > **Help** to access the Help menus.
2. Tap **Contents** to view all help topics or **Search** to find help on specific topics.

# Chapter 1: Set Up

---

## Unpack your smartphone

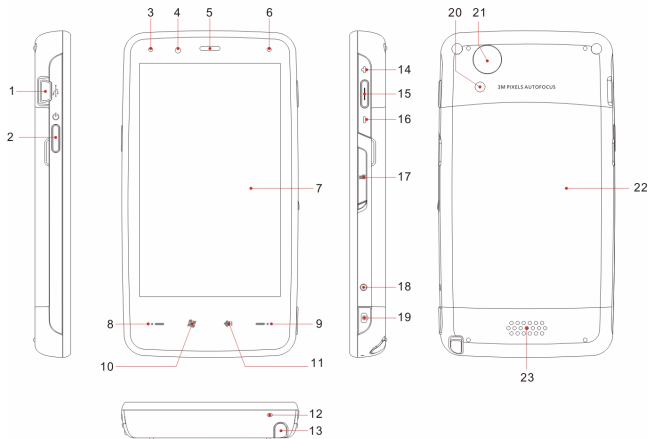
Your smartphone comes packed in a cardboard box. Carefully unpack the box and remove the contents. If any of the following items are missing or damaged, contact your dealer immediately:

- Acer F900 Smartphone
- Stylus
- Battery
- Quick Start Guide
- Getting Started CD
- USB cable
- AC adapter
- Headset (not shown)



# Get to know your smartphone

## Views



No.	Item	Description
1	Mini USB connector	Connect to a USB cable/headphones/charger.
2	Power button	Press to turn the screen on/off or enter sleep mode; press and hold to turn the smartphone off.
3	Bluetooth/WLAN/GPS indicator	Indicates Bluetooth, WLAN and GPS status.
4	Light sensor	Senses ambient light to adjust screen brightness for comfortable viewing.
5	Phone speaker	Emits audio from your smartphone; suitable for holding to your ear.
6	Charge indicator	Indicates battery charge status.



No.	Item	Description
7	Touchscreen	800 x 480 pixel screen to display data, phone content and enter information.
8	Talk/send button	Activate phone/dial/view recently dialed numbers/answer a call.
9	End button	Press to end a call/disconnect GPRS; press and hold to turn the phone function on/off.
10	Start button	Press to open the Start menu.
11	OK/close button	Press to activate the OK/ <b>X</b> function (if available in the top right-hand corner of the screen).
12	Microphone	Internal microphone.
13	Stylus	Use to enter information or select items on the touch screen.
14	Up	Press to move the cursor up.
15	Action key	Press to activate the selected menu item.
16	Down	Press to move the cursor down.
17	Micro SD card slot	Expand your device's memory capacity.
18	Reset pinhole	Insert the stylus into this hole to reset the device.
19	Camera button	Activate the camera or take a picture. Press down halfway to auto-focus.
20	Flash	Used to illuminate an object when taking photos in low-light conditions.
21	Camera	A 3.2-megapixel camera for taking high-resolution images.
22	Battery cover	Covers the battery/SIM card bay.
23	Speaker	Emits audio from your smartphone; suitable for handsfree use.

# LED indicators

## Bluetooth/WLAN/GPS indicator:

LED Color	State	Description
White	Flashing	GPS active
Amber	Flashing	WLAN connected
Blue	Flashing	Bluetooth on

## Charge indicator:

LED Color	State	Description
Red	Flashing	Battery is low and needs recharging/alarm notification (missed call, new message, etc.)
	Steady	Battery is charging
Green	Flashing	Phone is active
	Steady	Battery fully charged

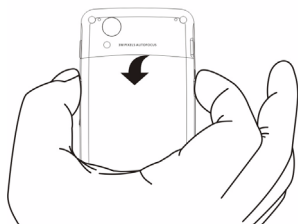
# Install the SIM card

To take full advantage of your smartphone's telephony capabilities, you must install a SIM card. The SIM card holder is located above the battery compartment.

## Open the battery compartment

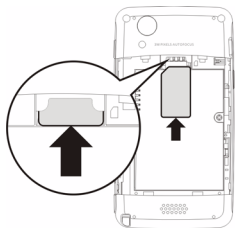
Gently, but firmly pull both sides of the battery cover to release it.

Remove the battery cover.



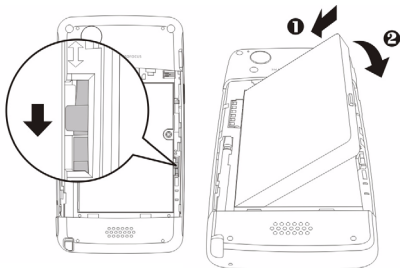
## Insert the SIM and replace the battery

Insert the SIM card into the SIM holder as shown, making sure the gold connectors face downwards.



Make sure the battery locking tab is open, as shown.

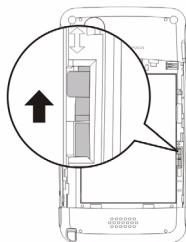
Place the battery into the battery compartment, lining up the battery connectors with those on the side of the compartment.



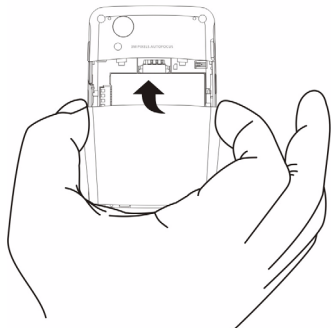
Slide the battery locking tab so it holds the battery in place.



**CAUTION:**  
RISK OF EXPLOSION IF BATTERY IS  
REPLACED BY AN INCORRECT TYPE.  
DISPOSE OF USED BATTERIES ACCORDING  
TO THE INSTRUCTIONS.

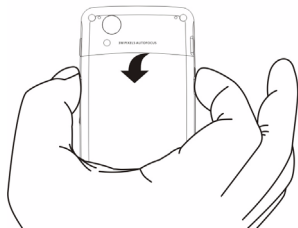


Gently, but firmly clip the battery cover in place.

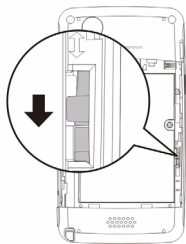


# Remove the SIM card and battery

Open the battery compartment as shown in **“Open the battery compartment”** on page 11.



Open the battery locking tab.



Using the small tab on the upper right side of the battery, carefully lift it out of its compartment.



Slide the SIM card out of its slot.



**Note:** Place your smartphone on a flat but soft surface when performing this step, to avoid scratching or damaging the screen.

Replace the battery and battery cover as shown in **“Insert the SIM and replace the battery” on page 11.**

## SIM card lock

Your smartphone may come with a SIM card lock, i.e., you will only be able to use the SIM card provided by your network operator.

To find out how to cancel a SIM lock, contact your network provider.

## Charge the battery

For initial use, you need to charge your smartphone for eight hours. After that you can charge it each day to recharge the battery to full capacity.

Connect the AC adapter cord to the mini USB connector on your smartphone.

Plug the AC adapter into any AC current outlet and charge the device for at least eight hours for the first charge.



**Tip:** We recommend you get into the habit of leaving your smartphone charging overnight, when not in use. This way you will not have to worry about recharging during the daytime, when it may be inconvenient.

## Power LED status during charging:

Charging: LED indicator steady red.

Charging complete: LED indicator steady green.

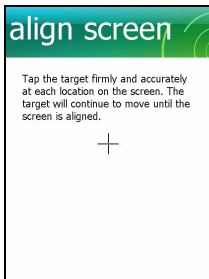
If the battery level becomes low in the course of normal use, a status icon appears on the smartphone screen indicating low battery status and an alarm sounds. The charge indicator will flash red.

## Turn on for the first time

To turn on your smartphone for the first time, press and hold the power button until the system bootup screen appears.

Tap the screen to set up your smartphone.

Follow the onscreen instructions to align the screen, practice using the stylus, set the date and time, and configure a password to protect your smartphone.



## Install add-on applications

After you've finished the initial setup, you will be asked if you want to install the following add-on applications:

- **Acer Album:** Displays photos and images in thumbnail and full-screen views.

- **Acer Namecard Manager:** Detects and stores text from photos of business cards for easy contact management.
- **Acer Backup Utility:** Creates backup copies of your calendar, contacts, tasks, personal profile, network settings, My Documents and messages.
- **Acer Voice Commander:** Uses voice commands to look up contacts, make phone calls, retrieve calendar information and control media playback.
- **Acer Easy Keyboard:** Provides an easy-to-use onscreen keyboard with larger keys.
- **Acer SIM Manager:** Manages contact data stored on the SIM card.
- **Acer Streaming Player:** Plays back streamed video content from the Internet.

Tap **Next** to continue. The installation of the chosen and other applications and tools will continue.

## Enter your PIN code

When you install a SIM card for the first time, you will have to enter a PIN code using the onscreen number pad.

If the PIN code you enter is incorrect, a warning message appears.



## Activate a new SIM card

If you are using your SIM card for the first time, it may require activation. Contact your network operator for details on how to do this.



# The Home screen

After rebooting, your smartphone will display the Home screen. You will be asked if you want to view the Icon Matrix or Acer 3D view as the default.

The Acer 3D view gives you icon-based access to many of the applications and features of your smartphone. You can scroll from side to side by dragging your finger or stylus to the left or right (only part of the screen will be visible at any time).

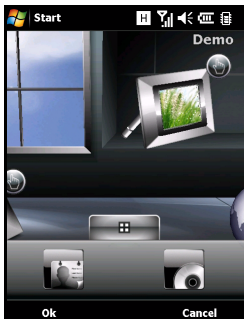


Tap an icon to launch the following features:

No.	Feature	Description
1	Clock	View your set locations on the globe.
2	Email	Launch the email application; also indicates any unread mails.
3	Messages	Launch the messaging application; also indicates any unread messages.
4	Calls	Open a list of dialed numbers, missed calls.
5	Weather	View weather forecasts for your set locations.
6	Calendar	View upcoming appointments.

No.	Feature	Description
7	Pictures	View content in <i>My pictures</i> as a slideshow.
8	Bookmarks	Open your <i>Favorites</i> folder.
9	Settings	Open the toolkit to customize your smartphone.
10	Programs	Open the <i>Quick Menu</i> ; you can set shortcuts here for quick access to frequently used applications and programs.

You can add or remove icons by tapping and holding anywhere on the Acer 3D view. This will reveal a tab that you can tap and drag up to show additional functions. Tap and drag icons between the desktop and the tab to add or remove them. You can also move the icons on the desktop while the tab is visible.



Alternatively, if you prefer a more traditional appearance, you can swipe your finger up or down the screen to use the Icon Matrix.



# Connecting to your PC and synchronizing data

You can synchronize the data on your smartphone with the data on your PC using the supplied USB sync cable and the Windows Vista Sync Center.

Refer to **“Connect to a PC and install software” on page 65** for more details on connecting and synchronizing.



# Chapter 2: Making Calls

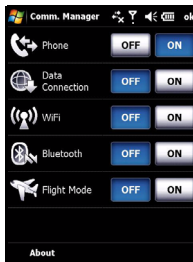
---

This chapter shows you how to make voice and video calls, and the various options available to you during your call.

## Before making a call

The phone function needs to be turned on before you can make voice and video calls; you can turn the phone on from the Comm. Manager (refer to “**Comm. Manager**” on page 52), or by pressing and holding the End key.

1. To access the Comm. Manager, tap any of the icons at the top of the screen or **Start > Settings > Connections tab > Comm. Manager**.
2. Tap the phone connection icon so it displays **On**.



## Make a call

1. From the Home screen, press **☰** to open the onscreen number pad to enter the telephone number.
2. Press **☎** to make the call.
3. To end the call, press **⏏** or tap **End** on the call screen.



# The onscreen number pad

The onscreen number pad allows you to dial numbers with the stylus.

To access the onscreen number pad press **\*\*=>**, the Talk/send button, or tap **Start > Phone**.

## Make a call

To make a call from your smartphone you can dial the number using the onscreen number pad.



## Dial from the onscreen number pad

1. Enter the number you want to call by tapping the onscreen number pad with the stylus.
2. Tap **Talk** (for voice calls) or **Video Call** (for video calls) to dial the number.

## Make a call to one of your contacts

1. Your contacts will be displayed above the onscreen number pad.
2. Tap the contact you want to call. The contact's details are shown.
3. Tap the number you want to call.

## Dial from the Speed Dial




Any contacts in your contact list will automatically be added to your Speed Dial. Tap **Speed Dial** beneath the Home screen and tap the contact you wish to call. You can opt to arrange numbers alphabetically or by the frequency with which you call the numbers. Swipe your finger up or down the screen to scroll through the list of contacts or tap a letter in the bar at the bottom of the page.

## Dial a number from Call History

Your Call History is also displayed above the onscreen number pad, and displays all received, dialed, and missed calls.

Tap a number to view the call details. To redial any number in the call history, select the number and press **↶** or tap **Call**.

Missed calls will be displayed in the telephone icon on the

Home Page as well as at the top of the screen using the  icon.

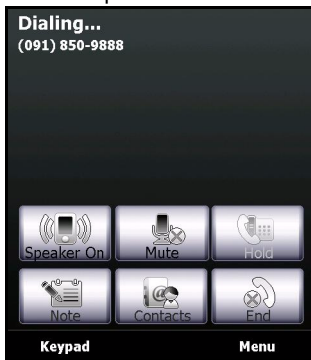
## Dial from other applications

You can dial numbers quickly and easily even when using other applications.

1. Press **Start > Phone**.
2. Make your call.
3. When you have finished your call, tap **X** in the top right corner of the screen, to return to the application you were using before you made the call.

# The voice call screen

Once you have dialed your number the voice call screen appears, where several options are available.



Turn on the speakerphone.



Mute the call.



Put the current call on hold.



Add a note.



Tap to enter the contacts list.



End the call.



Display the keypad.



Open the menu.



# The voice call menu

Tap **Menu** on the voice call screen to access the menu. The menu options available are:

Action	Description
Hold	Put the call on hold.
Mute/Unmute	Mute/unmute the call.
Turn Speakerphone On/Off	Turn the speakerphone on/off.
Turn Hands-free On/Off	Turn the handsfree feature on/off.
Conference	Begin a conference call.
Paste	Paste a copied number from the clipboard into the number field on the voice call screen.
Save to Contacts	Save the entered number to contacts.
Create Note	Create a note.
Call History	Enter the call history screen.
Speed Dial	Enter the speed dial directory.
Options	Enter the phone settings screen.



.....  
**Note:** Certain options are only available during a call. These menu items are greyed out when not in a call.  
.....

## Onscreen call options

### Answer a call

Press **⏻** or tap **Answer** to answer a call.

For incoming video calls, position your smartphone so your picture is shown clearly on the screen.

## Reject a call

Press **End** or tap **Ignore** to reject a call.

## End a call

To end a call, press **End** or tap **End**.

## Put a call on hold

To put a call on hold, tap **Hold** on the voice call screen. Tap again to resume the call.

## Swap between calls

When you receive a second call while already on a call, a notification message will appear.

1. Press **Swap** to answer the incoming call and the first call will be put on hold.
2. Tap **Swap** on the voice call screen to switch between calls.

## Conference calls

If you have one or more calls on hold and another online, you can combine all calls to create a conference call.

1. Tap **Menu > Conference**. All calls are combined.
2. To speak to selected participants privately during your conference call, tap **Menu > Private**.
3. Select the participant you wish to talk to in private.
4. To resume the conference call, tap **Menu > Conference**.

Press **End** or tap **End** and all participants will be disconnected.

## Dial an international number

When dialing international numbers, there is no need to enter the international direct dialing prefix ('00' etc.) before the

country code. Simply tap and hold **+0** on the onscreen number pad until **+** appears onscreen.



.....  
**Warning:** International call rates can vary greatly depending on the country you are calling and your network provider. We suggest you check all call rates with your network provider, to avoid excessive phone bills. If you are using your smartphone abroad, roaming charges will apply. Consult your network provider for roaming rates specific to the country you are visiting before you leave.  
.....

## Use the speakerphone

The speakerphone function allows you to make calls without having to hold the smartphone. This handsfree function is especially useful when driving.

To activate the speakerphone, tap **Speaker On** on the voice call screen. Tap **Speaker Off** to disable the speakerphone.


## Add notes


You can write or type notes during a call to record important information and view it at a later date.

1. Tap **Note** on the voice call screen.
2. Use the onscreen keyboard to enter letters and characters or the stylus to write handwritten notes.
3. Tap **OK** when you have finished to save the note.

To view the notes at a later date, tap **Start > Programs > Notes**. Tap the note you want to open and view.

## Mute a call

To mute a call, tap **Mute** on the voice call screen or  on the video call screen to switch off the microphone. Tap


**Unmute** or  to switch the microphone back on.


## Save a dialed number to contacts

You can save a number you have dialed to your contacts for future use.

1. Select the number from the Call History list, and tap **Save**.
2. Enter the contact's information and tap **OK** to save.

## Redial a missed call


When you have a missed call, the  icon appears at the top of the Home screen, while the phone icon will display the number of missed calls.

1. Tap **View** to display the missed call details.
2. Select the call from the list and press  or tap **Call**.

## Speed dial

Tap **Speed Dial** at the bottom of the Home Screen to view all your contacts as tiles indicating the contact name and number. You can sort the tiles alphabetically or by the frequency with which you have dialed the numbers. Tap a tile to immediately dial that contact.

## Call History

View recent calls by accessing Call History: open the onscreen number pad by pressing ; then tapping **Call History**.

## Call History Menu options

There are various options available in the Call History Menu.

- Tap **Filter** to organize the call history view. For example, tap **Filter > Missed** and only missed calls will be displayed.
- Tap **Delete All Calls** to delete all calls from the call history list.

# Chapter 3: Input Devices

---

This section will take you through the various input methods available to you on your smartphone.

## The stylus

The stylus is used to select items and enter information.

On your smartphone, the stylus replaces the mouse. Carefully remove the stylus from its holder to use.

**Tap:** Touch the screen once with the stylus to open items and select options.

**Drag:** Hold the stylus on the screen and drag across the screen to select text and images. Drag on a scroll bar to scroll up and down the screen.

**Tap and hold:** Tap and hold the stylus on an item to see a list of actions available for that item. On the pop-up menu that appears, tap the action you want to perform.

The stylus is also used for handwritten input. Refer to **“The onscreen keyboard” on page 30** for more details.

## The application buttons

The buttons are set to access the following applications by default:

Button 1 - Start Menu

Button 2 - OK/Close

Button 3 - Camera

We recommend that you use these defaults whenever possible.



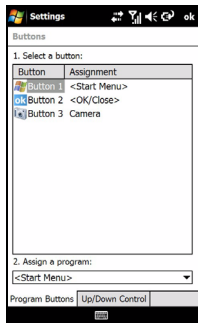
**Tip:** The application buttons listed above can be configured to launch applications that you use the most.

To configure which applications to launch with each button, tap **Start > Settings > Buttons**.

Select the button you wish to configure from the list, then select the program to assign to the button from the drop-down list below.

Tap **OK** to confirm and save.

As the buttons have icons printed on them, Acer strongly recommends retaining the default settings. This avoids confusion when using your smartphone.

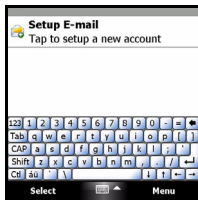


## The onscreen keyboard

You can activate an onscreen keyboard in certain applications when entering data.

Tap the keyboard icon at the bottom of the screen to display the keyboard. Tap again to hide the keyboard.

Tap the arrow next to the keyboard symbol to select different input options.



Mode	Description
Block Recognizer*	Write using letters, numbers, symbols and punctuation marks to be converted to text.
Keyboard (Default)	Displays a standard keyboard. Tap to enter letters, numbers and use function keys.
Letter Recognizer*	Write uppercase letters, lowercase letters, numbers and punctuation marks to be converted into text.

Mode	Description
Symbols	Displays all symbols and special characters.
Transcriber*	Use the stylus to write in cursive, mixed or print handwriting to be converted into text.



**Note:** The handwriting function can take some practice getting used to. Tap the ? symbol, visible when one of the handwriting options (\*) is active, to view writing demonstrations and access the Help menus.

Tap **Options** from the keyboard menu to adjust options and settings for each input mode.

## Configure input settings

You can change the default input method when using the onscreen keyboard.

1. Tap **Start > Settings > Personal tab > Input > Input Method** tab.
2. Select the input method you prefer from the list.
3. When certain modes are selected further options are available. In these cases, tap **Options** to view further settings.
4. Tap **OK** to confirm and save.

## Enable word completion

Your smartphone makes writing emails, messages and documents more efficient with the help of the word completion feature. This feature suggests words as you type.

1. Tap **Start > Settings > Personal tab > Input > Word Completion** tab.
2. Select the options you want to activate.
3. Tap **OK** to confirm and save.

## Other input options

You can also configure voice recording options, zoom levels and grammar rules on the Input Settings screen.

1. Tap **Start** > **Settings** > **Personal** tab > **Input** > **Options** tab.
2. Select and configure the settings as appropriate.
3. Tap **OK** to confirm and save.



-----  
**Note:** Refer to the Help menus for more information on adjusting input settings.  
-----



# Chapter 4: Messaging

---

This chapter shows you how to set up and use the SMS, MMS and email functions of your smartphone.

## The messaging screen

All SMS, MMS and email messages are accessed via the messaging screen.

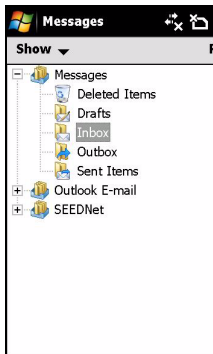
To access the messaging screen, tap **Start > Messaging > Messages**. Then tap the drop-down menu in the top left corner of the messaging screen to view the folder list.

All email accounts, SMS and MMS folders are displayed here. Tap on the plus sign next to each folder to view the subfolder list. Each folder features the following subfolders:

- Deleted Items: Displays all messages you have selected to delete.



**Note:** To completely erase messages, you will need to delete them from the Deleted Items folders as well. Tap **Menu > Tools > Empty Deleted Items** to accomplish this.



- Drafts: Displays all draft messages.
- Inbox: Displays all received messages.
- Outbox: Displays messages in the process of being sent.
- Sent Items: Displays all sent messages.

Tap a subfolder to open it. Tap **Inbox** to return to the main messaging screen. Tap **Menu** for a list of options appropriate to the selected folder.

## Manage your folders

You can select synchronization, download and other settings for certain folders. To manage your folders, tap **Menu > Tools > Manage Folders**, tap and hold on the folder name to open a menu of action items. Tap **Folder Options** to open and modify the settings for that folder.

## Text (SMS) messages

You can use your smartphone to send text messages to other mobile phones. Each text message can contain up to 160 characters.

## Create and send text messages

1. Tap **Start > Messaging > Messages**. Then tap the drop-down menu in the top left corner of the messaging screen.
2. Tap the **Messages** folder and the Inbox appears.
3. Tap **New**. The message window appears.
4. Select a recipient and enter your message then tap **Send**.



.....  
**Tip:** You can request delivery notification to ensure that your message has reached its recipient. To do this, tap **Menu > Tools > Options > Accounts** tab from the Text Messages folder. Tap **Text Messages** and check the **Request delivery notifications** checkbox.  
.....

## Reply to text messages

When a new text message arrives a message icon appears at the top of the Home screen and a notification message is displayed.

1. Tap **Start > Messaging > Messages**. Then tap the drop-down menu in the top left corner of the messaging screen.
2. Tap the **Text Messages** folder and the Inbox appears.
3. Tap a message to open it.
4. Tap **Reply** to reply to the message and the message window appears.
5. Enter your message and tap **Send**.

## Sort text messages

You can sort your text messages by message type, sender, received messages and message subject.

Tap the **Sort by** drop-down menu in the top-right of the messaging screen, and select an option from the list.

## MMS messages

MMS messages are similar to text messages but also allow you to attach multimedia files such as pictures, audio or video clips. Each MMS message can be up to 300 kB in size.

## Set up MMS messaging

Before you can send MMS messages, you have to set up a connection and profile. Ask your network provider for the information required to complete the setup procedure.

1. Tap **Start > Settings > Connections tab > Connections**.
2. Tap **Add a new modem connection** under the **My ISP** section.
3. The **Make New Connection** screen appears.
4. Enter a name for the connection.
5. Select **Cellular Line (GPRS)** from the **Select a modem** list and tap **Next**.
6. Enter the access point name provided by your network provider.

7. Enter your user name, password and domain.
8. Tap **Finish** to save and complete setup.

## Set up MMS profiles

You can select and configure several MMS messaging profiles for different networks and environments.

1. Tap **Start > Messaging > Messages**, then tap the drop-down menu in the top left corner of the messaging screen.
2. Tap the **Messages** folder and the Inbox appears.
3. Tap **Menu > MMS Settings > MMS Settings** tab.
4. Tap a profile from the list. Tap **Edit** to view the selected profile settings.
5. Tap each field to adjust its setting. These fields should be automatically configured by your network provider. If so, we recommend you leave them as they are.
6. Tap **Done** once you have finished editing the profile.
7. Tap **Select** to select the profile from the list and tap **OK**.



.....  
**Note:** For further information on options available to you when editing or creating MMS profiles, refer to the Help menus.  
.....

## Create MMS messages

1. Tap **Start > Messaging > Messages**. Then tap the drop-down menu in the top left corner of the messaging screen.
2. Tap the **Messages** folder and the Inbox appears.
3. Tap **New** and the message window appears.
4. Enter the recipient (along with other recipients in the Cc and Bcc fields if necessary) and subject of the MMS.
5. To attach a picture or video clip, tap **Insert Picture/Video...** and select the file you want to attach.

6. To attach an audio file, tap **Insert Audio...** and select the file you want to attach. The audio file will be displayed in the message.
7. To insert text, tap **Insert Text** and enter your message. All attachments and text will now be displayed in the message window.
8. Tap **Send**.

## Reply to MMS messages

When a new MMS message arrives, a message icon appears at the top of the Home screen and a notification message is displayed.

1. Tap **Start > Messaging > Messages**, then tap the drop-down menu in the top left corner of the messaging screen.
2. Tap the **Messages** folder and the Inbox appears.
3. Tap a message to open it.
4. Tap **Menu > Reply** to reply to the message. The message window will appear.
5. Follow the steps described in **“Create MMS messages” on page 36** to compose your reply.
6. Tap **Send**.

## Sort MMS messages

You can sort your MMS messages by message type, sender, received messages and message subject.

Tap the **Sort by** drop-down menu in the top-right of the messaging screen, and select an option from the list.



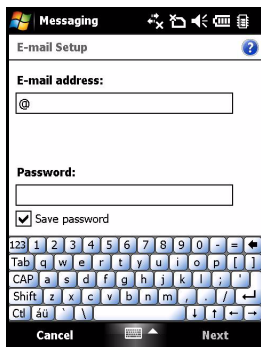
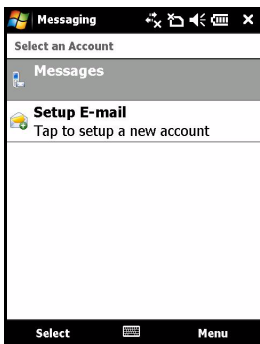
.....  
**Note:** For further information on options available to you when creating, replying to and sorting SMS and MMS messages, refer to the Help menus.  
.....

# Email

Your smartphone uses Outlook Mobile to manage email accounts. Tap **Start > Messaging** to open the messaging window. Tap **Setup E-mail** to set up your email account.

Enter your email address and password to set up the account. Select if you want to save your password or not.

When you've finished entering the information, tap **Next**. Your smartphone has pre-set definitions for a variety of popular ISPs and will recommend settings if your email address is recognized. Otherwise your smartphone will try to connect to the Internet to find the settings.



# Chapter 5: Home Screen Overview

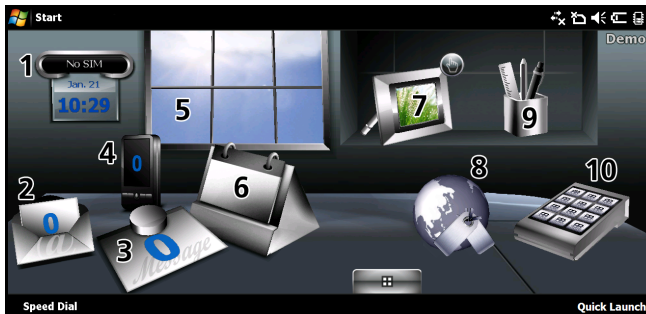
---

## The Home screen

When you switch on your smartphone, the Home screen appears following boot up.

The Home screen is the main point from which you can navigate your smartphone. The screen features connection status information, displays the date and time, and features a set of shortcut icons that help you to access the most frequently used applications quickly and easily.

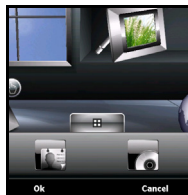
In the Acer 3D view, scroll from side to side by dragging your finger or stylus to the left or right (only part of the screen will be visible at any time) to reveal more icons.



Tap an icon to launch the following features:





























No.	Feature	Description
1	Clock	View your set locations on the globe.
2	Email	Launch the email application; also indicates any unread mails.
3	Messages	Launch the messaging application; also indicates any unread messages.
4	Calls	Open the list of recently dialed numbers, missed calls.
5	Weather	View local weather forecasts for your set locations.
6	Calendar	Open your calendar to view upcoming appointments.
7	Pictures	View content in <i>My pictures</i> as a slideshow.
8	Bookmarks	Open your <i>Favorites</i> folder.
9	Settings	Open the toolkit to customize your smartphone.
10	Programs	Open the <i>Quick Menu</i> ; you can set shortcuts here for quick access to frequently used applications and programs.

You can add or remove icons by tapping and holding anywhere on the Acer 3D view. This will reveal a tab that you can tap and drag up to show additional functions. Tap and drag icons between the desktop and the tab to add or remove them. You can also move the icons on the desktop while the tab is visible.





## Status icons

Icon	Description	Icon	Description
	New email, SMS or MMS		Missed call or calls
	WLAN access available		Telephone call connected
	WLAN connected		Call is being forwarded
	Connected to PC via USB		Call is on hold
	Signal strength		System sounds on
	No signal		Vibrate only, no system sounds
	Antenna off (telephone is off)		All system sounds off
	No phone service		Battery charge indicator
	Incoming telephone call		Low battery warning
	GPRS available		Battery is charging
	3G network available		3G connected
	GPRS connected		Bluetooth headset connected
	EDGE available		Synchronizing over EDGE
	EDGE connected		HSDPA/HSUPA network available

Icon	Description	Icon	Description
	Synchronizing over HSDPA/HSUPA		HSDPA/HSUPA connected

## Return to the Home screen

You can return to the Home screen from any application by tapping **Start > Today**.

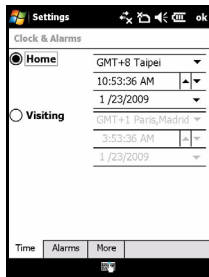
## Customize basic settings

### Set the date and time

To set the date and time, tap **Start > Settings > System tab > Clock & Alarms > Time** tab.

Tap **Home** and select your time zone from the drop-down menu. Set the time by tapping the up and down arrows. Select the date from the drop-down calendar.

When you have finished, tap **OK**. A confirmation message will appear. Tap **Yes** to save your settings.



## Personalize your smartphone

You can enter your personal information to easily identify your smartphone. This is especially useful if it should ever be lost or stolen. To enter owner information, tap **Start > Settings > Owner Information**.

Enter your name along with any other information you want to store.

Tap the **Notes** tab to add any additional notes.

Tap the **Options** tab to configure how this information is displayed.

Tap **OK** to confirm and save.

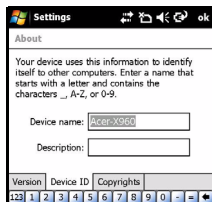


## Name your smartphone

Your smartphone uses a name to identify itself when connected to other computers. To specify a name, tap **Start > Settings > System** tab > **About > Device ID**.

Enter a name for your device. Add a description if necessary.

Tap **OK** to confirm and save.





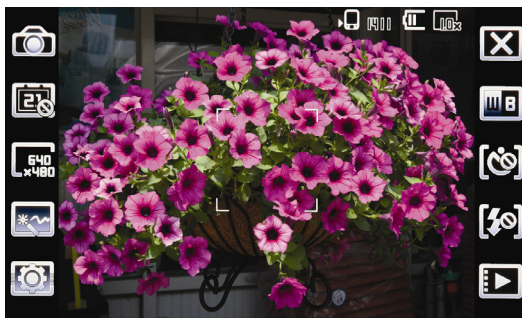
# Chapter 6: Using the Camera

---

Your smartphone features a 3.2-megapixel digital camera mounted on the rear. This section will take you through all the steps to get you up and taking photos and videos with your smartphone.

To activate the camera, press the camera button or go to **Start > Programs > Multimedia > Camera**.











# Camera icons and indicators



Icon	Description
	Adjust the camera mode. <ul style="list-style-type: none"><li>• Photo - Take a photograph.</li><li>• Video - Shoot a video.</li><li>• POI Photo - Take a photo and associate it with the GPS coordinates of the location.</li><li>• Continuous 3/5/9 - Take three, five or nine photos in a burst (select the number of photos by tapping the icon repeatedly).</li><li>• MMS - Take a photo that is suited for sending by MMS.</li></ul>
	Turn the time stamp on or off.
	Adjust the image resolution.






Icon	Description
	Apply an effect to photos taken: <ul style="list-style-type: none"> <li>• Normal - No effect is applied.</li> <li>• Greyscale - Takes black and white photos.</li> <li>• Negative - Uses negative colors when taking the photo.</li> <li>• Art Frieze - Adjusts colors to create texture in a photograph.</li> <li>• Embossed - Creates an embossed appearance.</li> <li>• Sepia - The photo is given a Sepia appearance.</li> <li>• Silhouette - Gives photos a silhouetted appearance.</li> <li>• Mirror - The object is mirrored.</li> </ul>
	Enter the advanced settings page.
	Exit and return to the previous screen.
	Set the white-balance mode.
	Turn the self-timer on or off.
	Turn the flash on or off; turn the spotlight on or off.
	Open the album to view thumbnails of stored pictures and videos.
	Displays the storage being used and approximately how many photos you can still take.
	Displays the battery charge status.
	Displays the current magnification. Use the up/down buttons to adjust magnification.

## Take a photo

1. Frame your subject and steady your smartphone.

2. Adjust any settings you require, such as brightness and scene mode. Zoom in or out slide using the up or down buttons.
3. Press the camera button down halfway until the image comes into focus. Push down fully to take the photo.

## Shoot a video

1. Frame your subject and steady your smartphone.
2. Press the camera button down fully to begin recording.
3. Press the camera button down fully to stop recording.

## Supported formats

The following file formats are supported:

Type	Formats
Image	JPEG and BMP
Video	3GP

## Save photos and videos to a micro SD card

Tap **Start** > **File Explorer** > **My Documents** > **My Pictures** (or **My Videos**). Tap and hold on the file you want to save to your micro SD card, select **Copy** or **Cut** from the pop-up menu.

Navigate to your micro SD card in **File Explorer**, tap and hold in the folder you want to save the image/video to, and select **Paste** from the pop-up menu.



**Tip:** Use the Advanced Settings screen in Camera to set the storage to the microSD card so you can easily transfer pictures to your computer.



# Photo and video options

After you have taken your photo or video, it is automatically saved.

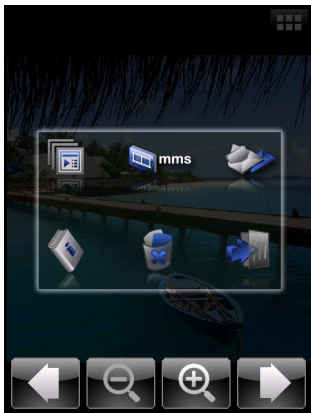


**Note:** The default locations for saving photos and videos are My Documents/My Pictures and My Documents/My Videos respectively. This can be changed from the Settings page.

Tap the Album icon and select a photo to view. Tap the photo to display the option icons.

From this interface, you can start a slideshow with all the pictures in the folder, send the current picture to a contact as an MMS or email message, view the picture's information, delete the picture or return to the thumbnail view.

You can also zoom into the picture or zoom out and navigate to the previous or following file.



## Edit photos

You can crop or rotate your saved photos.

1. Tap **Start > Programs > Pictures & Videos**.
2. All your photos and videos are displayed as thumbnails. Select a photo to edit.
3. Tap **Menu** to view the list of editing options.



# Chapter 7: Advanced Operation

---

## Put your smartphone in flight mode

You can enter flight mode to turn off telephone, Bluetooth and WLAN functions and use your smartphone as a handheld device during a flight. Check with your airline to make sure this is permitted onboard.

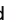
Some airlines may provide wireless Internet services on board that can be accessed via the WLAN feature. Check prior to your departure whether this service is available on your flight.

Switch your smartphone off during takeoff and landing as it may interfere with aircraft electronic systems.

## Enter flight mode

1. Access the Comm. Manager (refer to **“Comm. Manager”** on page 52).
2. Tap Flight Mode **ON** to turn off all phone, Bluetooth and WLAN functions.



**Tip:** Press and hold  for five seconds to exit flight mode and re-activate wireless connections (note: only connections that were enabled prior to entering flight mode will be re-activated).



# Comm. Manager

Your smartphone features phone, Bluetooth and WLAN functions. This section will explain how to activate and set basic phone, Bluetooth and wireless network (WLAN) connection settings through the Comm. Manager screen.



**Tip:** Tap and hold the name of any communication type to open its associated Settings page.

## Use the Comm. Manager

To access the Comm. Manager, tap any of the communication icons at the top of the screen or **Start > Programs > Comm. Manager**.

## Activate or deactivate connections

You can choose to activate one or all connections from the Comm. Manager window.

Each connection icon will be highlighted when turned on.

## Adjust connection settings

This section will show you how to adjust detailed settings for your phone, wireless and Bluetooth connections.

## Phone connections

Once you have inserted a SIM card, the smartphone will automatically detect your network provider.

For all phone settings, tap **Settings > Phone**. Here you can adjust ringtone, security, services, network and CB (Cell Broadcast) settings.

## Adjust phone connection settings

You can use the Connection Wizard to configure country and network settings for your phone connection, as well as create customized phone connections.

1. Tap **Start** > **Settings** > **Connections** tab > **Connection Wizard**.
2. Select your country and network operator from the lists.
3. Tap **OK** to confirm and save.

To detect these settings automatically, tap **Search**.

To edit network parameters, tap **Edit**.

Once all settings are complete, tap **OK** to confirm and save.

## Create and edit new phone connections

If your country is not listed, or you want to create a customized GPRS or CSD connection, refer to 'Creating a new connection' in the Phone Data Manager Help menus for detailed information on how to do this.

## Select a network

You can set the smartphone to detect your network automatically or set it manually.

### Detect a network automatically:

1. Tap **Start** > **Settings** > **Phone** > **Network** tab.
2. Select **Automatic** from the **Network Selection** list.
3. Tap **Find Network**. Your network will be automatically detected.

### Select a network manually:

1. Tap **Start** > **Settings** > **Phone** > **Network** tab.
2. Select **Manual** from the **Network Selection** list. A list of available networks will appear.

3. Select a network from the list and tap **OK**.

When your current network is unavailable, tap **Select** to select another network to use.



-----  
**Note:** Contact your service provider should you have any problems obtaining voice mail and the text message service center numbers.  
-----

## Adjust wireless network settings

You can use your smartphone to connect to a wireless local area network (WLAN) to exchange information with your PC or network and access the Internet.

If there are multiple WLANs available, your smartphone will prompt you to choose a network when you activate the WLAN function. Select a network and specify whether it will be used primarily for **Work** or **The Internet**. The smartphone will save your settings and connect to your chosen network.

## Wireless power management

When activated, wireless connections use considerable battery power so we recommend customizing power management options to get the most out of your battery.



-----  
**Note:** When battery power is lower than 20 percent, a notification message will appear asking if you want to continue using wireless functions or not.  
-----

You can create, view and edit all available wireless networks in your area, and configure network adapter card settings.

## View wireless networks

1. Tap **Start > Settings > Connections** tab > **Wi-Fi > Wireless** tab.
2. Scroll through the list to view all available networks.
3. Tap the **Networks to access** list to sort by **All available**, **Only access points** or **Only computer-to-computer** connections.

## Create new wireless network connections

1. Tap the **Start > Settings > Connections** tab > **Wi-Fi > Wireless** tab.
2. Tap **Menu > Add New...** from the list.
3. Enter all required information to configure the wireless network. Refer to the Help menus to guide you through the configuration screens for each setting.

## Edit wireless network connections

1. Tap the **Start > Settings > Connections** tab > **Wi-Fi > Wireless** tab.
2. Select a connection from the list.
3. Tap **Menu > Edit**.
4. Enter all required information to configure the wireless network. Refer to the Help menus to guide you through the configuration screens for each setting.

## Adjust network adapter settings

1. Tap **Start > Settings > Connections** tab > **Wi-Fi > Network Adapters** tab.
2. Select a network adapter from the list.
3. Tap **Edit**.
4. Select to use a server-assigned IP address or enter a specific IP address.
5. Tap **OK** to confirm and save.

# Adjust Bluetooth settings

You can create and adjust Bluetooth connections, accessibility settings and service settings to get the most out of the smartphone's Bluetooth functions.

## Bluetooth connections

You can use Bluetooth to exchange information between your smartphone and other mobile devices.

For all Bluetooth settings, tap **Settings** > **Connections** tab > **Bluetooth**. Here you can adjust Bluetooth profiles, status, accessibility, and services settings. You can also view version information.

## Create new Bluetooth connections

The simplest way to set up and configure a new Bluetooth connection is through the Bluetooth Manager.

1. Tap **Start** > **Settings** > **Connections** tab > **Bluetooth**. You will be asked to turn on Bluetooth, then tap **Settings** > **Add a device**.
2. Alternatively tap **Start** > **Settings** > **Connections** tab > **Bluetooth** > **My Devices** > **Add**.
3. You may limit the search to specific device types from the drop-down list, or select **All devices**. Your smartphone will search for devices in range.
4. Select the device you want to connect to.
5. Tap **Select** and follow all onscreen instructions to set up the connection.

## Adjusting Bluetooth settings

1. Tap the **Start** > **Settings** > **Connections** tab > **Bluetooth** > **Settings**.
2. Select whether to **Enable** or **Disable** the Bluetooth function and whether the device should be **Discoverable** or not.



3. You can also define a **Name** for your smartphone.
4. Tap **Advanced...** to change additional **Connectivity, Serial Ports, File Transfer, Audio, Object Exchange** and **Synchronization** settings.

## Phone settings

Many phone settings are automatically configured by your smartphone when you insert a SIM card. The device will communicate with your service provider and automatically obtain all necessary settings, such as network name, voice mail and text message center numbers.

You can, however, view and modify these settings yourself if necessary, through the Phone Settings screen.

Tap **Start > Settings > Personal** tab > **Phone**.

## Configure caller options

You can configure certain caller options to keep control over your incoming and outgoing calls.

Bar outgoing or incoming calls using call barring; choose who to display your identity to with caller ID; specify a number to which calls can be forwarded if you are unavailable using call forwarding; choose to be notified if an incoming call is waiting using call waiting.

## Set up caller ID

1. Tap **Start > Settings > Personal** tab > **Phone > Services** tab.
2. Select **Caller ID** from the list and tap **Get Settings**.
3. Select who to provide your caller ID to.
4. Tap **OK** to confirm and save.

## Set up call forwarding

1. Tap **Start > Settings > Personal** tab > **Phone > Services** tab.

2. Select **Call Forwarding** from the list and tap **Get Settings**.
3. Specify whether to forward all calls or only under certain conditions. Tap the checkboxes to select the option you require and enter number(s) to forward calls to.
4. Tap **OK** to confirm and save.

## Set up call waiting

1. Tap **Start > Settings > Personal tab > Phone > Services** tab.
2. Select **Call Waiting** from the list and tap **Get Settings**.
3. Select whether to be notified or not when a call is waiting.
4. Tap **OK** to confirm and save.



.....  
**Note:** Refer to the Help menus for more detailed information on adjusting phone settings.  
.....

## Choose a profile and ring tone

A profile contains settings for alert notification, device volume, ring type and tone.

1. Tap **Start > Programs > Phone > Sound Profiles**. There are three profiles:

Profile	Description
Normal	The default profile. Call alert levels are set to medium.
Vibrate	Intended for discreet use. Call alert is muted and set to vibrate.
Silent	Call alert is muted and vibrate is turned off.

2. Select a profile and use the lists and sliders to adjust settings to customize your profile.
3. Tap **Advance** to set further options for each profile.
4. Tap **OK** to confirm and save.

# Manage contacts

Your smartphone features an address book that allows you to save contacts to either the internal memory or onto your SIM card.

Further options are explained in this section that are accessible via the Contact screen menu.

## Add and edit contacts

To add a new contact:

1. Enter the telephone number on the Phone screen.
2. Tap **Menu > Save to Contacts**.
3. Tap **<New Contact>** and select whether this is a **SIM Contact** or **Outlook Contact**.
4. Enter the required information.
5. Tap the **Notes** tab to enter any additional information for the contact.
6. Tap **OK** to save.

You can choose to save contacts directly to your SIM card. This is useful if you use your SIM card with multiple phones and you always need your address book to hand.



.....  
**Note:** You can only enter a contact name and telephone number when creating a new SIM contact. If more information is required, create a regular phone contact.  
.....

## Edit a contact

1. Tap **Start > Contacts**.
2. Tap on the contact you want to edit.
3. Tap **Menu > Edit**.
4. Edit the contact information and tap **OK** to save.

## Copy contacts

You can copy contacts stored in internal memory to your SIM card, and vice versa.

### Copy a contact from internal memory to the SIM card



.....  
**Note:** Copying a contact from internal memory to your SIM will only copy the contact's name and phone number. Names longer than 14 characters will be truncated.  
.....

1. Tap **Start > Contacts**.
2. Tap the internal memory contact you want to save.
3. Tap **Menu > Copy Contact > To SIM**.
4. Edit the information as required.
5. Tap **OK** to save the contact to your SIM card.

### Copy a contact from the SIM card to internal memory

1. Tap **Start > Contacts**.
2. Tap the SIM contact you want to save.
3. Tap **Menu > Copy Contact > To Contacts**.
4. Edit the information as required.
5. Tap **OK** to save the contact to your internal memory.

## Send contacts via text or beam

You can send your contacts details to other phones using text messaging or via beam.

## Send contacts via message

1. Tap **Start > Contacts**.
2. Select a contact.
3. Tap **Menu > Send Contact > Messages**.
4. Select the contact information you want to send and tap **Done**.
5. Specify a recipient and tap **Send**.

## Send contacts via beam

1. Tap **Start > Contacts**.
2. Select a contact.
3. Tap **Menu > Send Contact > Beam**.
4. Select the Bluetooth device to send the contact to.

## Delete contacts

To free up space on either the internal memory or on your SIM card, you can delete contacts from your address book.

1. Tap **Start > Contacts**.
2. Select a contact.
3. Tap **Menu > Delete Contact**.
4. Tap **Yes** to permanently delete the contact.

## Assign a ring tone and picture to specific contacts

You can assign a specific ringtone and picture to a particular contact so they are easily identifiable when they call.

1. Tap **Start > Contacts**.
2. Tap on the contact you wish to assign a ringtone/picture to.
3. Tap **Menu > Edit**.

4. Tap **Select a picture...** to open My Pictures. Tap the desired picture to assign a picture to the contact.
5. Scroll to **Ringtone** and tap the field. Select a ringtone from the drop-down list.
6. Tap **OK** to confirm and save.

## Namecard Manager

Namecard Manager is an application that integrates optical character recognition and a contact list with the camera function. It provides tools for converting data on namecards to a digital format that can be integrated into a unified Contact list.

Tap **Start > Programs > Multimedia > Namecard Manager**.

### Recognize namecard information

Place the namecard on a flat surface and tap **Recognize** to display the namecard on the screen. Press the Camera button halfway down to focus on the namecard and all the way down to take a photo.



.....  
**Tip:** Before taking the picture, the following pointers help to improve recognition quality.

If the original name card is a landscape design, it is recommended to rotate the smartphone before taking the picture.

Hold the camera lens 10 to 12 cm above the namecard.

Move the camera up and down so that the namecard is framed by the red markers in the four corners of the screen.

.....

Tap **Language** to select the language used on the namecard and **Identify** to run OCR and insert the details into the contact list.

You may modify the recognized text by tapping on a field. The image of the namecard will be repositioned so you can confirm the contents. Select the field to modify and correct any errors using the keyboard or onscreen keyboard.

# Manage namecard information

Tap **Manage** to open the namecard database.



-----  
**Note:** The database only stores images and information for namecards that have already been recognized.  
-----

Tap the “Wand” icon in the upper right-hand corner of the screen to open a letter table. Tap a letter to display the information for all the namecards filed under that letter.

Select a namecard to expand its contents and view the original picture of the namecard.

Tap **Menu** to show the menu:

- **New:** Create a new digital name card.
- **Import:** Import and recognize an existing picture of a namecard. Supported formats are BMP, JPG and PNG.
- **Edit:** Modify the name card information.
- **Delete:** Delete the selected name card.

## SIM Manager

SIM Manager allows you to manage your SIM phonebook and to copy the phonebook entries to Contacts. To start SIM Manager, tap **Start > Programs > Phone > SIM Manager**.

The standard display mode is to show your SIM contacts and Contacts entries at the same time. You may change this by tapping **SIM**, **Contact** or **Standard** at the bottom of the screen.

You can sort your contacts by tapping **Name** or **Pos** (only for SIM contacts) at the top of the list of contacts.

Tap and hold on a contact to **Dial** that contact's number, **Send SMS**, **Edit**, **Delete** or **Copy to Contact/SIM**.

Tap **Menu** at the bottom of the screen to reveal:

**New SIM Contact:** Add a new phonebook entry to the SIM card.

**Refresh:** Refresh the contact lists.

**SMS Management:** Enter the SMS management screen.

**SIM Information:** View your SIM card information.

**My Phone Numbers:** Displays the information of the inserted SIM card

**About:** View the version and copyright information of SIM Manager.

## Copy contact information

You can copy contact information to/from the Contacts list from/to the SIM card. You may copy individual contacts, multiple contacts or all contacts.

- To copy all contacts, tap the box alongside Name: Tap and hold any contact and select **Copy to Contact/SIM**.
- To copy multiple contacts, tap the box alongside each contact: Tap and hold any contact and select **Copy to Contact/SIM**.
- To copy a single contact, tap and hold any contact, and select **Copy to Contact/SIM**.

## SMS Management

Tap **Menu > SMS Management** to enter the SMS management screen and display SMS content on the SIM card.

Double tap the number in the Pos column to view the corresponding SMS.

To delete an SMS, select the SMS and then **Del selected SMS**.



# Connect to a PC and install software

You can use Microsoft ActiveSync (on Windows XP) or the Windows Mobile Device Center (on Windows Vista) to synchronize the information on your computer with the information on your smartphone, comparing and updating data on both locations. This serves as backup data in case something happens to your smartphone.

## Connect to a PC

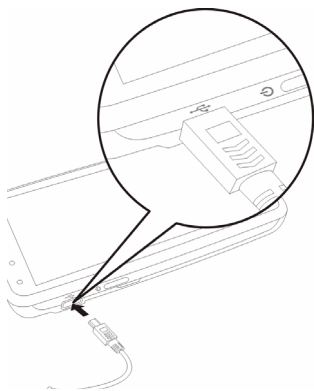
The packaged mini USB sync cable enables you to synchronize the information on your smartphone with the data on your computer using ActiveSync.

Plug the mini USB sync cable into the mini USB connector on your smartphone. Plug the USB client connector into an available USB port on your computer.

## Configure USB to PC settings

You can enable advanced networking to enhance your USB to PC connection, should you be experiencing any problems synchronizing your data with ActiveSync.

1. Tap **Start > Settings > Connections tab > USB to PC**.
2. Check the **Enable advanced network functionality** checkbox to enable.



3. Tap **OK** to confirm and save.

## Other functions

### Manage your calendar

You can set appointments and event reminders with the calendar feature.

#### Set a new appointment:

1. Tap **Start > Calendar**.
2. Tap **Menu > New Appointment**.
3. Enter appointment information and reminder frequency.
4. Tap **OK** to confirm and save.

To edit an appointment, tap the entry and then tap **Edit** to open the appointment entry screen.

### Create tasks

Tasks can be set to remind you of specific things you must do and the completion deadlines.

#### Create a new task

1. Tap **Start > Programs > Tasks**.
2. Tap **Menu > New Task**.
3. Enter all task information, start and due dates and how often to be reminded.
4. Tap **OK** to confirm and save.

To edit an appointment, tap the entry and then tap **Menu > Edit** to open the task entry screen.



.....  
**Note:** For more information on other options available in the calendar and task screens, refer to the Help menus.  
.....

## Browse the Internet

In order to browse the Internet with your smartphone, you must be connected to a 3G or wireless network or to a computer with an Internet connection via ActiveSync.

Tap **Start** > **Internet Explorer** to open the browser.

To adjust your browser settings, tap **Menu** > **Tools** > **Options**.

## Start Windows Live:

1. Tap **Start** > **Programs** > **Windows Live**.
2. Sign in with your email address and password and your contacts list appears.

## Multimedia playback

Your smartphone comes supplied with a variety of programs that you can use to enjoy multimedia content.

### FM Tuner

FM Tuner allows you to listen to your favorite local radio stations and save them to an easily-accessible list of favorites.

To start FM Tuner tap **Start** > **Programs** > **Multimedia** > **FM Tuner**.

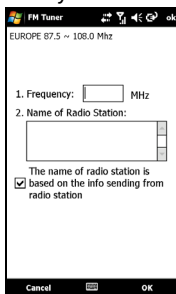
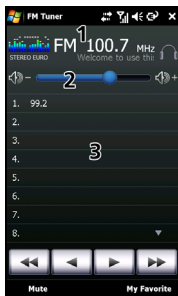


.....  
**Note:** You will need to connect your headset to enjoy radio programs.  
.....

The FM Tuner screen indicates the frequency the tuner is receiving (1), volume level (2) and your defined favorites (3).

Tap the frequency display to open a number pad that allows you to enter a different frequency.

Tap **My Favorite** to manage your list of favorite radio stations. To add a favorite, select the position in the list that you'd like to add the favorite at, and tap **+** to open the frequency allocation window. Enter the frequency using the keyboard.



**Important:** There are restrictions on the range of frequencies that may be legally listened to in many countries. The FM Tuner on your smartphone has three predefined geographical regions: EUROPE, JAPAN and USA. You may only set a frequency within the range specified for each region.

# Use Windows Media Player

You can use Windows Media Player to play videos you have taken with your smartphone as well as other media files, such as MP3 music files.

The following formats are supported:

Type	Formats
Audio	WMA, MP3, WAV, AAC
Video	WMV

## Play video or audio files

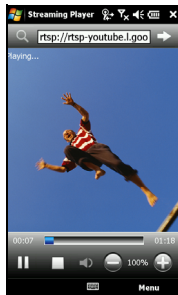
1. Tap **Start > Programs > File Explorer**.
2. Locate the file to playback, and tap once to play it in Windows Media Player.

## Streaming Player

Steaming Player allows you to view streamed video off the Internet directly on your phone.

If you try to open an audio or movie video that is not supported by Microsoft Windows Media Player, for example RTSP or HTTP, the system will automatically switch to Streaming Player.

Alternatively tap **Start > Programs > Multimedia > Streaming Player** to manually launch the player. You can enter the address of the content you wish to access in the address bar.




Tap anywhere on the playback window to display the content full-screen. Tap the screen again to return to the normal display mode.

## Personalize your smartphone

This section takes you through all settings that can be adjusted under the **Personal** tab in the **Settings** screen.

### Adjust the volume

To adjust the volume, tap  at the top of the Home screen. The volume control appears.

- Use the upper slider to adjust the ring volume.
- Use the lower slider to adjust system volume.
- Use the icons at the top of the screen to turn all sounds on, set to vibrate only or mute all sounds.
- If you adjust the volume during a call, the speaker volume will be adjusted.

### Configure start menu programs

You can select the programs you most frequently use and put them in the Start menu as shortcuts.

1. Tap **Start > Settings > Personal tab > Menus**.
2. Select the programs to appear in the Start menu from the list.
3. Tap **OK** to confirm and save.

### Configure sounds and notifications

You can specify sounds to play for certain events or when certain actions are performed.

1. Tap **Start > Settings > Personal tab > Sounds & Notifications > Sounds** tab.

2. Select to enable sounds for events or programs. You can also specify to enable sounds when tapping the screen or pressing buttons.
3. Tap the **Notifications** tab.
4. Select an event from the list and the notification options for that event are displayed.
5. Adjust the settings.
6. Repeat steps 4 and 5 to adjust notification options for other events.
7. Tap **OK** to confirm and save.

## Configure backlight settings

You can specify the appearance and conditions under which the screen backlight will be on or off.

1. Tap **Start > Settings > System** tab > **Backlight > Battery Power** tab.
2. Select the timing for the backlight to turn on and off when your smartphone is running on battery power.
3. Tap the **External Power** tab. Select the timing of the backlight to turn on or off when your smartphone is running on external power.
4. Tap the **Backlight Level** tab. Adjust the backlight brightness level and automatic level selection options.
5. Tap **OK** to confirm and save.



.....  
**Tip:** Backlight settings greatly affect battery life. Configure these settings carefully to ensure that you get the most out of your battery.  
.....

## Manage system certificates

System certificates are used to positively identify your smartphone to other systems.

Tap **Start > Settings > System tab > Certificates** to view all certificates.

## Set the clock and alarms

You can set the current date and time for two locations, and set multiple alarms.

Refer to **“Set the date and time” on page 42** for information on how to set the time and date.

## Set alarms

1. Tap **Start > Settings > System tab > Clock & Alarms > Alarms tab**.
2. Tap the checkbox to activate an alarm.
3. Tap **Description** and enter a name for the alarm.
4. Select the day and time for the alarm.
5. Tap **OK** to confirm and save.

## Adjust microphone volume

You can adjust the microphone volume level and activate the Automatic Gain Control (AGC) feature.

1. Tap **Start > Settings > System tab > Microphone**.
2. Move the slider to adjust the microphone volume.
3. Tap **OK** to confirm and save.

## Configure regional settings

You can adjust regional settings for number, currency, date and time formats to match those used in your country.

1. Tap **Start > Settings > System tab > Regional Settings**.



2. Tap the **Region, Number, Currency, Date** and **Time** tabs to view information for your region. Adjust any if necessary.
3. Tap **OK** to confirm and save.

## Power saving options

1. Tap **Start > Settings > System** tab > **Power > Advanced** tab.
2. Select the interval after which your smartphone will turn off if not in use. You can specify two intervals: one for when on battery power, and one for when on external power.

## View power status

Tap **Start > Settings > System** tab > **Power > Battery** tab to view battery power status.

## Remove programs

You can remove programs you have installed on your smartphone to free up extra storage memory.



-----  
**Note:** You can only remove programs you have installed, you cannot remove programs installed during manufacture.  
-----

1. Tap **Start > Settings > System** tab > **Remove Programs**.
2. Tap the program you want to remove from the list.
3. Tap **Remove** and the program will be uninstalled.

## Configure screen options

You can change orientation, align the screen, enable ClearType and adjust text size to make viewing your smartphone as comfortable as possible.

1. Tap **Start > Settings > System** tab > **Screen > General** tab.
2. Select screen orientation and tap **Align Screen** if you need to re-align the screen.

3. Tap the **ClearType** tab. Select to enable ClearType.
4. Tap the **Text Size** tab. Move the slider to adjust text size.
5. Tap **OK** to confirm and save.

## Reset your smartphone

You may have to perform a reset if your smartphone fails to respond when buttons are pressed or the screen is tapped.



**Note:** Before performing a reset, ensure that your smartphone is not locked. Press any key or tap the screen to see if the fingerprint screen opens.

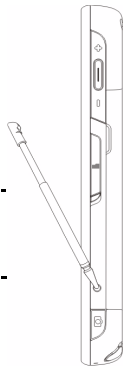
### Soft reset

A soft reset allows your smartphone to get a fresh start, similar to rebooting your computer. All data and settings information are retained after resetting.



**Important:** To reduce the risk of damage to your smartphone, only use the supplied stylus to reset the device.

Using the tip of your stylus, lightly press the **Reset** button inside the hole on the side of your smartphone.



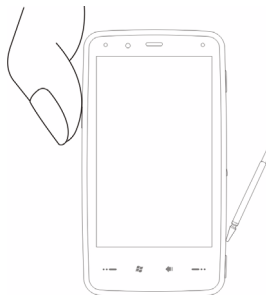
### Cold boot

A cold boot will clear the RAM of your smartphone. It is similar to turning a computer off and then turning it back on.



.....  
**Important:** To reduce risking damage to your smartphone, only use the supplied stylus to reset the device.  
.....

Hold down the power button and use the tip of your stylus to lightly press the **Reset** button inside the hole on the side of your smartphone.



## Clean boot



.....  
**Warning!** You should only perform a clean boot when all other reset options have failed to restore your smartphone to an operational state.  
.....

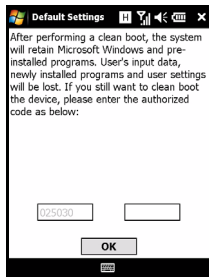
A clean boot will restore your smartphone to the state it was when you got it from the factory.



.....  
**Warning!** This will erase all your personal information, any contacts stored on your phone and any programs you installed.  
.....

**If your screen is responding to stylus input:** Go to **Start > Programs > Utilities > Default Settings**. Read the warning information and enter the security code in the empty textbox. Tap **OK** to proceed.

**If your screen is not responding to stylus input:** Press the reset button while holding the power button down. When you see the Acer screen, press and hold the Record button. You will see a screen asking you to confirm the clean boot, press the camera button to confirm. If you do not press the camera button, your smartphone will reboot to as normal.



# Chapter 8: Accessories and Tips

---

This chapter shows you how to use accessories with your smartphone, as well as provide useful tips for when you are using your smartphone.

## Use the stereo headset

Your smartphone comes packaged with a stereo headset with built-in microphone for handsfree use when making calls.

To use the headset, plug it into the mini USB port in the side of the unit.

When the headset is plugged in, all audio is routed to the headset, and the speakers are turned off.

- To answer an incoming call, press the silver button on the microphone.
- Adjust the volume with the integrated volume wheel.
- End the call by pressing the silver button again.

## Use a Bluetooth headset

Your smartphone's Bluetooth functions make it fully compatible with all Bluetooth headsets. This allows you to use the unit handsfree when making calls, without the inconvenience of wires.

### To set up your Bluetooth headset:

1. Turn on Bluetooth using the Comm. Manager (please see **"Comm. Manager"** on page 52).
2. Connect to the headset as described in **"Create new Bluetooth connections"** on page 56.

3. Tap the icon for your Bluetooth headset.
4. Enter your headset passkey and tap **OK** or press the **OK** button.
5. Tap **Finish** to complete setup.

When you want to answer an incoming call, press the “answer” button on your Bluetooth headset. Press **End** or **End** to end the call.



**Tip:** As well as being essential for handsfree operation when driving, you can also use your Bluetooth headset when at home or in the office, to avoid carrying your smartphone around with you at all times. In ideal conditions, Bluetooth range is up to 10 metres, or 30 feet.

## Use your smartphone as a modem

When connected to your PC, your smartphone can function as a modem via GPRS or UMTS.

You can also use a USB connection or the Bluetooth function of your smartphone to connect to your PC or laptop and act as a modem. You must first set up an ISP connection on your PC or laptop.

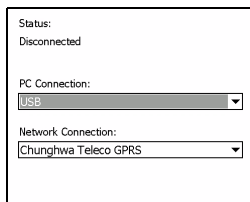
1. Click **Start** > **Settings** > **Control Panel**.
2. Click **Network Connections** > **Create a new connection**.
3. Click **Next** to begin the New Connection Wizard.
4. Select **Connect to the Internet** and click **Next**.
5. Select **Set up my connection manually** and click **Next**.
6. Select **Connect to a dial-up modem** and click **Next**.
7. Enter the name of your ISP (Internet Service Provider) and click **Next**.
8. Enter your ISP's phone number. The number must begin with '\*99#'. Click **Next**.

9. Select one option from the Connection Availability screen and click **Next**.
10. Enter your username and password and click **Next**.
11. Click **Finish** to complete the setup.

You can now establish a Bluetooth connection between your PC and your smartphone. When you attempt to access the Internet on your PC, your smartphone will dial the ISP number specified to establish a connection.

## Use a USB connection

1. Close ActiveSync if it is running. This helps Internet sharing to function properly.
2. Tap **Start > Programs > Internet Sharing**.
3. Select USB from the PC connection drop-down menu.
4. Select your network connection type from the network connection drop-down menu.
5. Tap **Connect**.



Your smartphone will now act as a modem.

## Use a Bluetooth connection

You can also use Bluetooth to link your PC to your smartphone to connect to the Internet. Ensure that Bluetooth is enabled from the Comm. Manager (refer to **“Comm. Manager” on page 52**), and that other devices can discover your smartphone. To do this, open the Comm. Manager, tap **Settings > Bluetooth > Mode** tab, and check **Make this device visible to other devices**.

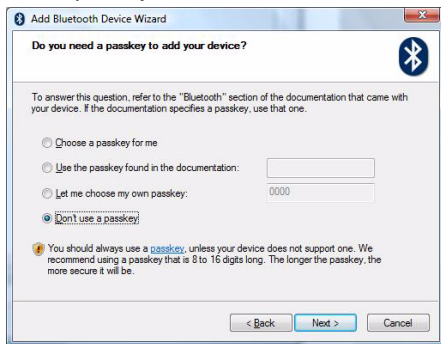
Ensure that your computer's Bluetooth adapter is switched on.

- Open **Bluetooth Places** and click **Add...**, then follow the steps of the Add Bluetooth Device Wizard.

- Double click on your smartphone device name.



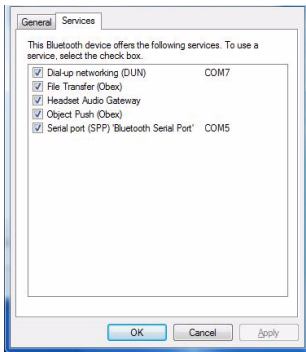
- Select **Let me choose my own passkey** when requested, and enter a passkey.



- Your smartphone will ask to allow pairing, and for the Passkey. Enter the same code you entered above and tap **OK**.



- Windows will automatically connect to your smartphone and detect what services are available.



## Insert a micro SD card

Your smartphone features a memory expansion slot that accepts a micro SD card to expand memory and storage capacity.

Open the micro SD reader cover and insert the micro SD card into the slot. Make sure the gold connectors are facing upwards. Push the card in until it clicks into place.



# Appendix

---

## FAQ, troubleshooting and error messages

This section lists frequently asked questions that may arise during the use of your smartphone, and gives easy answers and solutions to these questions.

Aspect	Question	Answer
Audio	Why is there no sound coming from the device?	<p>If the headset is plugged into the device, the speaker is automatically shut off. Disconnect the headset.</p> <p>Check that the device volume setting is not muted. Tap any of the icons at the top of the Home screen.</p> <p>Check that the volume control is not at its lowest setting.</p>
Touch screen	Why is the touch screen not responding to my stylus taps?	The screen may have lost its alignment. Go to <b>Start &gt; Settings &gt; System</b> tab > <b>Screen</b> to re-align the screen.
Multimedia files	Why can't I view my picture files?	You may be trying to view an image that is not supported. Refer to <b>"Supported formats" on page 48</b> for more information.
	Why can't I view my video files?	You may be trying to view a video that is not supported. Refer to <b>"Supported formats" on page 48</b> for more information.

Aspect	Question	Answer
	Why can't I play my music files?	You may be trying to play a file that is not supported. Refer to <b>"Multimedia playback"</b> on <b>page 67</b> for more information.
System information and performance	How do I check the OS version of my device?	Tap <b>Start &gt; Settings &gt; System</b> tab > <b>System Information</b> to check the OS version and other hardware and software information.
	How do I restore the system back to its default factory settings?	Perform a clean boot. Refer to <b>"Clean boot"</b> on <b>page 75</b> for more information.
	What should I do if the system stops functioning normally or crashes?	Perform a reset. Refer to <b>"Soft reset"</b> on <b>page 74</b> for more information.
Power	I couldn't turn on the device.	The battery power may be depleted. Recharge the device. Refer to <b>"Charge the battery"</b> on <b>page 14</b> for more information.
	Even when fully recharged, the battery seems to run down very quickly.	Check power saving options. Tap <b>Start &gt; Settings &gt; System</b> tab > <b>Power</b> to configure power saving options.

## Error messages

Error message	Description
Connection canceled	Operation canceled by the user.
Service unavailable - please try again later	The network is not stable, or server has not responded. Try again later.
Connection unavailable - please check your network settings	<p>No path to the destination is available. Please check the settings in <b>Start &gt; Settings &gt; Connections</b> tab.</p> <ol style="list-style-type: none"><li>1. If your Smartphone is connected to your PC via USB, check both the PC's network settings and ActiveSync settings (when connected via USB, neither Wi-Fi nor GPRS/3G is used).</li><li>2. If Wi-Fi is enabled, check the Wi-Fi settings from <b>Start &gt; Settings &gt; Connections</b> tab &gt; <b>Comm. Manager</b> (when Wi-Fi is enabled, GPRS/3G will not be used).</li></ol> <p><b>Note:</b> You might need to log into the wireless environment.</p> <ol style="list-style-type: none"><li>3. If you are using a GPRS/3G network, check the settings from Start -&gt; Settings -&gt; Connections Page -&gt; Connections. If the smartphone is currently roaming, and the <b>Exclude international GPRS/3G roaming</b> is checked, you will need to uncheck it.</li></ol> <p><b>Notes:</b></p> <ol style="list-style-type: none"><li>1. Try using Internet Explorer to connect to a website to verify your network connection.</li><li>2. When the wireless signal is weak, the data connection may be unstable. Please try again later.</li></ol>

# Specifications

## Performance

- Samsung SC3 6410, 533/667 MHz
- System memory:
  - 128 MB of SDRAM (16 MB for modem use)
  - 256 MB of Flash ROM
- Microsoft Windows Mobile 6.1 Professional Edition

## Display

- 3.8" TFT touchscreen
- 800 x 480 resolution
- 65K color support
- Microsoft ClearType technology for clearer, crisper font display

## Multimedia

- CD-quality stereo output
- Mini USB microphone output
- Mono speaker 0.5 W (max)
- Omni-directional microphone
- Formats supported

Type	Formats
Audio playback	WMA, MP3, WAV, AAC, AMR
Ringtone	SP-MIDI, MIDI, MMF, AMR, AWB, RMI, MP3, AAC
Video recording	3GP, MPEG-4, H.263, AVI, WMV
Video playback	3GP, MPEG-4, WMV, H.263, H.264

## USB connector

- 10-pin mini USB connector
- USB Slave
- DC power-in (5 V, 1 A)

## Connectivity

- Bluetooth 2.0+EDR
- IEEE Wi-Fi 802.11 b/g WLAN
- GSM 850 / 900 / 1800 / 1900
- UMTS 2100 / 1900 / 850
- HSDPA / HSUPA / EDGE / GPRS

## Camera

- 3.2 megapixel auto-focus (rear)
- LED flash

## Expansion

- Micro SD memory card slot up to 8 GB

## Battery

- High density, rechargeable 1530 mAh Lithium Polymer battery (changeable)
- Battery life:
  - Up to 4 hours 3G call talk time, with backlight off
  - Up to 6 hours 2G call talk time, with backlight off
  - Up to 5 hours of GPS usage
  - Up to 15 hours of Pocket PC use
  - 245 hours standby time (WCDMA)
  - 275 hours standby time (GSM)



**Note:** Length of battery operation will depend on power consumption which is based on system resource use. For example, constantly using the backlight or using power-demanding applications will shorten battery life between charges.

## Design and ergonomics

- Stylish, light and robust design

Height	117.5 mm
Width	63.5 mm
Thickness	12.9 mm
Weight	155 g (including battery and stylus)

## Warnings and precautions

- Do not use this product near water.
- Do not place this product on an unstable cart, stand or table. If the product falls, it could be seriously damaged.
- Slots and openings are provided for ventilation to ensure reliable operation of the product and to protect it from overheating. These openings must not be blocked or covered. The openings should never be blocked by placing the product on a bed, sofa, rug or other similar surface. This product should never be placed near or over a radiator or heat register, or in a built-in installation unless proper ventilation is provided.
- Never push objects of any kind into this product through cabinet slots as they may touch dangerous voltage points or short-out parts that could result in a



fire or electric shock. Never spill liquid of any kind onto or into the product.

- To avoid damage of internal components and to prevent battery leakage, do not place the product on a vibrating surface.
- Never use this product when engaging in sporting activities, exercising, or in any vibrating environment which may cause a short circuit or damage, and even a risk of explosion from the battery pack.

## CAUTION when listening to music

To protect your hearing, follow these instructions.

- Increase the volume gradually until you can hear clearly and comfortably.
- Do not increase the volume level after your ears have adjusted.
- Do not listen to music at high volumes for extended periods.
- Do not increase the volume to block out noisy surroundings.
- Decrease the volume if you can't hear people speaking near you.

## Battery information

This product uses a Lithium Polymer battery. Do not use it in a humid, wet and/or corrosive environment. Do not put, store or leave your product in or near a heat source, in a high temperature location, in strong direct sunlight, in a microwave oven or in a pressurized container, and do not expose it to temperatures over 60 °C (140 °F). Failure to follow these guidelines may cause the battery to leak acid, become hot, explode or ignite and cause injury and/or damage. Do not pierce, open or disassemble the battery. If the battery leaks and you come into contact with the leaked fluids, rinse thoroughly with water and

seek medical attention immediately. For safety reasons, and to prolong the lifetime of the battery, charging will not occur at low (below 0 °C/32 °F) or high (over 40 °C/104 °F) temperatures.

The full performance of a new battery is achieved only after two or three complete charge and discharge cycles. The battery can be charged and discharged hundreds of times, but it will eventually wear out. When the talk and standby times are noticeably shorter than normal, buy a new battery. Use only Acer approved batteries, and recharge your battery only with Acer approved chargers designated for this device.

Unplug the charger from the electrical plug and the device when not in use. Do not leave a fully charged battery connected to the ac charger, since overcharging may shorten its lifetime. If left unused, a fully charged battery will lose its charge over time. If the battery is completely discharged, it may take a few minutes before the charging indicator appears on the display or before any calls can be made.

Use the battery only for its intended purpose. Never use any charger or battery that is damaged.

Do not short-circuit the battery. Accidental short-circuiting can occur when a metallic object such as a coin, clip, or pen causes direct connection of the positive (+) and negative (-) terminals of the battery. (These look like metal strips on the battery.)

This might happen, for example, when you carry a spare battery in your pocket or purse. Short-circuiting the terminals may damage the battery or the connecting object.

Leaving the battery in hot or cold places, such as in a closed car in summer or winter conditions, will reduce the capacity and lifetime of the battery. Always try to keep the battery between 15 °C and 25 °C (59 °F and 77 °F). A device with a hot or cold battery may not work temporarily, even when the battery is fully charged. Battery performance is particularly limited in temperatures well below freezing.

Do not dispose of batteries in a fire as they may explode. Batteries may also explode if damaged. Dispose of batteries according to local regulations. Please recycle when possible. Do not dispose as household waste.

## Replacing the battery pack

Your smartphone uses lithium batteries. Replace the battery with the same type as that which came bundled with your product. Use of another battery may present a risk of fire or explosion.



.....  
**Warning! Batteries may explode if not handled properly. Do not disassemble or dispose of them in fire. Keep them away from children. Follow local regulations when disposing of used batteries.**  
.....

## Additional safety information

Your device and its enhancements may contain small parts. Keep them out of the reach of small children.

## Operating environment



.....  
**Warning! For safety reasons, turn off all wireless or radio transmitting devices when using your device under the following conditions. These devices may include, but are not limited to: wireless LAN (WLAN), Bluetooth and/or 3G.**  
.....

Remember to follow any special regulations in force in any area, and always switch off your device when its use is prohibited or when it may cause interference or danger. Use the device only in its normal operating positions. This device meets RF exposure guidelines when used normally, and it and its antenna are positioned at least 1.5 cm (5/8") away from your body. Do not cover the antenna with metal and you should position the device at the above-stated distance from your

body. To successfully transmit data files or messages, this device requires a good quality connection to the network. In some cases, transmission of data files or messages may be delayed until such a connection is available. Ensure that the above separation distance instructions are followed until the transmission is completed. Parts of the device are magnetic. Metallic materials may be attracted to the device, and persons with hearing aids should not hold the device to the ear with the hearing aid. Do not place credit cards or other magnetic storage media near the device, because information stored on them may be erased.

## Medical devices

Operation of any radio transmitting equipment, including wireless phones, may interfere with the functionality of inadequately protected medical devices. Consult a physician or the manufacturer of the medical device to determine if they are adequately shielded from external RF energy or if you have any questions. Switch off your device in health care facilities when any regulations posted in these areas instruct you to do so. Hospitals or health care facilities may be using equipment that could be sensitive to external RF transmissions.

**Pacemakers.** Pacemaker manufacturers recommend that a minimum separation of 15.3 cm (6") be maintained between wireless devices and a pacemaker to avoid potential interference with the pacemaker. These recommendations are consistent with the independent research by and recommendations of Wireless Technology Research. Persons with pacemakers should do the following:

- Always keep the device more than 15.3 cm (6") from the pacemaker.
- Not carry the device near your pacemaker when the device is switched on. If you suspect interference, switch off your device, and move it.

**Hearing aids.** Some digital wireless devices may interfere with some hearing aids. If interference occurs, consult your service provider.

## Vehicles

RF signals may affect improperly installed or inadequately shielded electronic systems in motor vehicles such as electronic fuel injection systems, electronic antiskid (antilock) braking systems, electronic speed control systems, and air bag systems. For more information, check with the manufacturer, or its representative, of your vehicle or any equipment that has been added. Only qualified personnel should service the device, or install the device in a vehicle. Faulty installation or service may be dangerous and may invalidate any warranty that may apply to the device. Check regularly that all wireless equipment in your vehicle is mounted and operating properly. Do not store or carry flammable liquids, gases, or explosive materials in the same compartment as the device, its parts, or enhancements. For vehicles equipped with an air bag, remember that air bags inflate with great force. Do not place objects, including installed or portable wireless equipment in the area over the air bag or in the air bag deployment area. If in-vehicle wireless equipment is improperly installed, and the air bag inflates, serious injury could result. Using your device while flying in aircraft is prohibited. Switch off your device before boarding an aircraft. The use of wireless teledevices in an aircraft may be dangerous to the operation of the aircraft, disrupt the wireless telephone network, and may be illegal.

## Potentially explosive environments

Switch off your device when in any area with a potentially explosive atmosphere and obey all signs and instructions. Potentially explosive atmospheres include areas where you would normally be advised to turn off your vehicle engine.

Sparks in such areas could cause an explosion or fire resulting in bodily injury or even death. Switch off the device at refueling points such as near gas pumps at service stations. Observe restrictions on the use of radio equipment in fuel depots, storage, and distribution areas; chemical plants; or where blasting operations are in progress. Areas with a potentially explosive atmosphere are often, but not always, clearly marked. They include below deck on boats, chemical transfer or storage facilities, vehicles using liquefied petroleum gas (such as propane or butane), and areas where the air contains chemicals or particles such as grain, dust or metal powders.

Follow any restrictions. Do not use the device where blasting is in progress.

## Emergency calls

Important: Wireless phones, including this device, operate using radio signals, wireless networks, landline networks, and user-programmed functions. Because of this, connections in all conditions cannot be guaranteed. You should never rely solely on any wireless device for essential communications like medical emergencies.

To make an emergency call:

1. If the device is not on, switch it on. Check for adequate signal strength. Some networks may require that a valid SIM card is properly inserted in the device.
2. Press **---** as many times as needed to clear the display and ready the device for calls.
3. Enter the official emergency number for your present location. Emergency numbers vary by location.
4. Press **--**.

If certain features are in use, you may first need to turn those features off before you can make an emergency call. Consult this guide or your service provider for more information.

When making an emergency call, give all the necessary information as accurately as possible. Your wireless device may be the only means of communication at the scene of an accident. Do not end the call until given permission to do so.

## Disposal and recycling information

Do not throw this electronic device into the trash when discarding.

To minimize pollution and ensure utmost protection of the global environment, please recycle. For more information on the Waste from Electrical and Electronics Equipment (WEEE) regulations, visit

<http://www.acer-group.com/public/Sustainability/sustainability01.htm>



### Mercury advisory

For projectors or electronic products containing an LCD/CRT monitor or display:

Lamp(s) inside this product contain mercury and must be recycled or disposed of according to local, state or federal laws. For more information, contact the Electronic Industries Alliance at [www.eiae.org](http://www.eiae.org). For lamp-specific disposal information, check [www.lamprecycle.org](http://www.lamprecycle.org).



# Taking care of your smartphone

1. **DO** take care not to scratch the screen of your smartphone. Keep the screen clean. When working with your smartphone, use the supplied stylus or plastic-tipped pens intended for use with touch-sensitive screens. Never use an actual pen or pencil or other sharp object on the screen surface.
2. **DO NOT** expose your smartphone to rain or moisture. Do not let water enter the circuitry through the front panel buttons or expansion slots. In general, treat your smartphone as you would a mobile phone or other small electronic device.
3. **DO** be careful not to drop your smartphone or subject it to any strong impact. Do not place your smartphone in your back pocket.
4. **DO NOT** expose your smartphone to extreme temperatures. For example, do not leave your smartphone on the dashboard of a car on a hot day or when temperatures are below freezing point. Also, keep it away from heaters and other sources of heat.
5. **DO NOT** use or store your smartphone in any location that is dusty, damp or wet.
6. **DO** use a soft, damp cloth to clean your smartphone. If the surface of the screen becomes soiled, clean it with a soft cloth moistened with diluted window-cleaning solution.
7. **DO NOT** press down on the screen with force, otherwise you may crack the screen.



# Safety regulations

## Declaration of Conformity for EU countries

Hereby, Acer, declares that this Smartphone series is in compliance with the essential requirements and other relevant provisions of Directive 1999/5/EC.

Compliant with Russian regulatory certification:



## LCD pixel statement

The LCD unit is produced with high-precision manufacturing techniques. Nevertheless, some pixels may occasionally misfire or appear as black or red dots. This has no effect on the recorded image and does not constitute a malfunction.

## Radio device regulatory notice



.....  
**Note:** Regulatory information below is for models with wireless LAN and/or Bluetooth only.  
.....

## General

This product complies with the radio frequency and safety standards of any country or region in which it has been approved for wireless use. Depending on configuration, this product may or may not contain wireless radio devices (such as wireless LAN and/or Bluetooth modules). Information below is for products with such devices.

## Certificate Information (SAR)

This device meets the EU requirements (1999/519/EU) on the limitation of exposure of the general public to electromagnetic fields by way of health protection.

The limits are part of extensive recommendations for the protection of the general public. These recommendations have been developed and checked by independent scientific organizations through regular and thorough evaluations of scientific studies. To guarantee the safety of all persons, regardless of age and health, the limits include a significant safety buffer.

Before radio devices can be put in circulation, their agreement with European laws or limits must be confirmed; only then may the CE symbol be applied.

The unit of measurement for the European Council's recommended limit for mobile telephones is the "Specific Absorption Rate" (SAR). This SAR limit is 2.0 W/kg, averaged over 10 g of body tissue. It meets the requirements of the International Commission on Non-Ionizing Radiation Protection (ICNIRP) and was included in the European Standard EN 50360 for mobile radio devices. The SAR regulation for mobile telephones is in line with European Standard EN 62209-1. The maximum SAR value is calculated at the highest output level in all frequency bands of the mobile telephone. During use, the actual SAR level is usually much lower than the maximum value, because the mobile telephone works in different output levels. It only transmits with as much output as is required to reach the network. In general the following applies: The closer you are to a base station, the lower the transmission output of your mobile telephone. The highest SAR value for this device, measured in accordance with the standard, is 0.593 W/kg.

## FCC INTERFERENCE STATEMENT

This mobile device meets the guidelines for exposure to radio waves. Your mobile device is a radio transmitter and receiver. It is designed not to exceed the limits for exposure to radio waves recommended by international guidelines.

This equipment has been tested and found to comply with the limits for a Class B digital device, pursuant to Part 15 of the FCC Rules. These limits are designed to provide reasonable protection against harmful interference in a residential installation. This equipment generates, uses and can radiate radio frequency energy and, if not installed and used in accordance with the instructions, may cause harmful interference to radio communications. However, there is no guarantee that interference will not occur in a particular installation. If this equipment does cause harmful interference to radio or television reception, which can be determined by turning the equipment off and on, the user is encouraged to try to correct the interference by one or more of the following measures:

- Reorient or relocate the receiving antenna.
- Increase the separation between the equipment and receiver.
- Connect the equipment into an outlet on a circuit different from that to which the receiver is connected.
- Consult the dealer or an experienced radio/TV technician for help.

### RF exposure warning:

- The equipment complies with FCC RF exposure limits set forth for an uncontrolled environment.
- The equipment must not be co-located or operated in conjunction with any other antenna or transmitter.



Acer Incorporated  
8F, 88, Sec. 1, Hsin Tai Wu Rd., Hsichih  
Taipei Hsien 221, Taiwan



## Declaration of Conformity

### We, Acer Incorporated

8F, 88, Sec. 1, Hsin Tai Wu Rd., Hsichih, Taipei Hsien 221, Taiwan

Contact Person: Ms. Harriot S. L. Lee

Tel: 886-2-6606-3131 ext 3811 Fax: 886-2-6606-5353

E-mail: [Harriot\\_Lee@acer.com.tw](mailto:Harriot_Lee@acer.com.tw)

Hereby declare that:

**Product:** Pocket PC Smart Phone  
**Trade Name:** Acer  
**Model Number:** F900

Is compliant with the essential requirements and other relevant provisions of the following EC directives, and that all the necessary steps have been taken and are in force to assure that production units of the same product will continue comply with the requirements.

### R&TTE Directive 1999/5/EC as attested by conformity with the following harmonized standards:

#### ● Article 3.1(a) Health and Safety

- EN60950-1:2001 + A11:2004
- EN50360:2001 / EN62209-1:2006
- EN62311:2008
- EN50332-1: 2000

#### ● Article 3.1(b) EMC

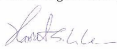
- EN301 489-1 V1.6.1
- EN301 489-3 V1.4.1
- EN301 489-7 V1.3.1
- EN301 489-17 V1.2.1
- EN301 489-24 V1.4.1
- EN55022:2006 Class B / EN55024 : 1998 / A1:2001 / A2: 2003
- EN55013: 2001+A1:2003+A2:2006 / EN55020 : 2007

#### ● Article 3.2 Spectrum Usages

- EN300 328 V1.7.1
- EN301 511 V9.0.2
- EN301 908-1 V3.2.1
- EN301 908-2 V3.2.1
- EN300 440-1 V1.1.2 / EN300 440-2 V1.3.1

### RoHS Directive 2002/95/EC on the Restriction of the Use of certain Hazardous Substances in Electrical and Electronic Equipment

Year to begin affixing CE marking 2008.

  
\_\_\_\_\_  
Harriot S. L. Lee  
Regulation Center, Acer Inc.

\_\_\_\_\_  
Apr. 3, 2009  
Date

- A**
- ActiveSync
  - synchronizing 66
- application buttons 29
- B**
- backlight settings 71
- battery
  - charging 14
  - information 87
  - installing 13
- Bluetooth
  - connections 56
  - headset 77
  - sending contacts 61
  - settings 53
- C**
- calendar 66
- call barring 57
- call forwarding 57
- call history 23
  - dialing a call history number 23
  - options 28
- call waiting 58
- caller ID 57
- calls
  - answering 25
  - ending 26
  - from other applications 23
  - on-screen options 25
  - putting on hold 26
  - rejecting 26
  - swapping between 26
  - using the on-screen dial pad 22
- camera
  - editing photo 49
  - icons and indicators 46
  - information 87
  - shooting a video 48
  - supported formats 48
  - taking a photo 47
- clock and alarms 72
- connecting to a PC 65
- connectivity 87
- contacts
  - adding and editing 59
  - assigning ring tones 59
  - deleting 61
  - making calls to a contact 22
- D**
- date and time
  - setting 42
- design 88
- display 86
- E**
- error messages 83
- F**
- FAQs 83
- features 5
- flight mode 51, 54
- G**
- GPRS 41, 53, 78
- H**
- help
  - menus 6
  - sources 6

**I**  
input options 32  
input settings 31  
international numbers 26

**L**  
LED indicators 10, 14

**M**  
microphone volume 72  
MMS messages 35

**N**  
naming 43  
network  
    selecting 53

**O**  
on-screen dial pad 22  
on-screen keyboard 30

**P**  
performance 86  
personalizing 42  
phone  
    connections 52, 53  
photos & videos  
    editing 49  
power management 54  
profiles 58

**R**  
regional settings 72  
ring tones 58

**S**  
safety regulations 88  
screen options 73  
SD card 81  
    information 87  
SIM Card  
    Entering PIN Code 15

Installing 11  
SIM toolkit 62  
software  
    list 88  
    removing 73  
sounds and notifications 70  
speakerphone 27  
specifications 86  
Start menu 70  
status icons 41  
stylus 29  
system certificates 72

**T**  
tasks 66  
troubleshooting 83  
turning on 15

**U**  
unpacking 7  
USB connector 87

**V**  
video calls  
    the video call screen 25  
views  
    left 10  
Voice Call / Video Call Menu  
25  
voice calls  
    the voice call screen 24  
volume  
    adjusting 70

**W**  
Windows Media Player 67  
WLAN  
    settings 54  
word completion 31